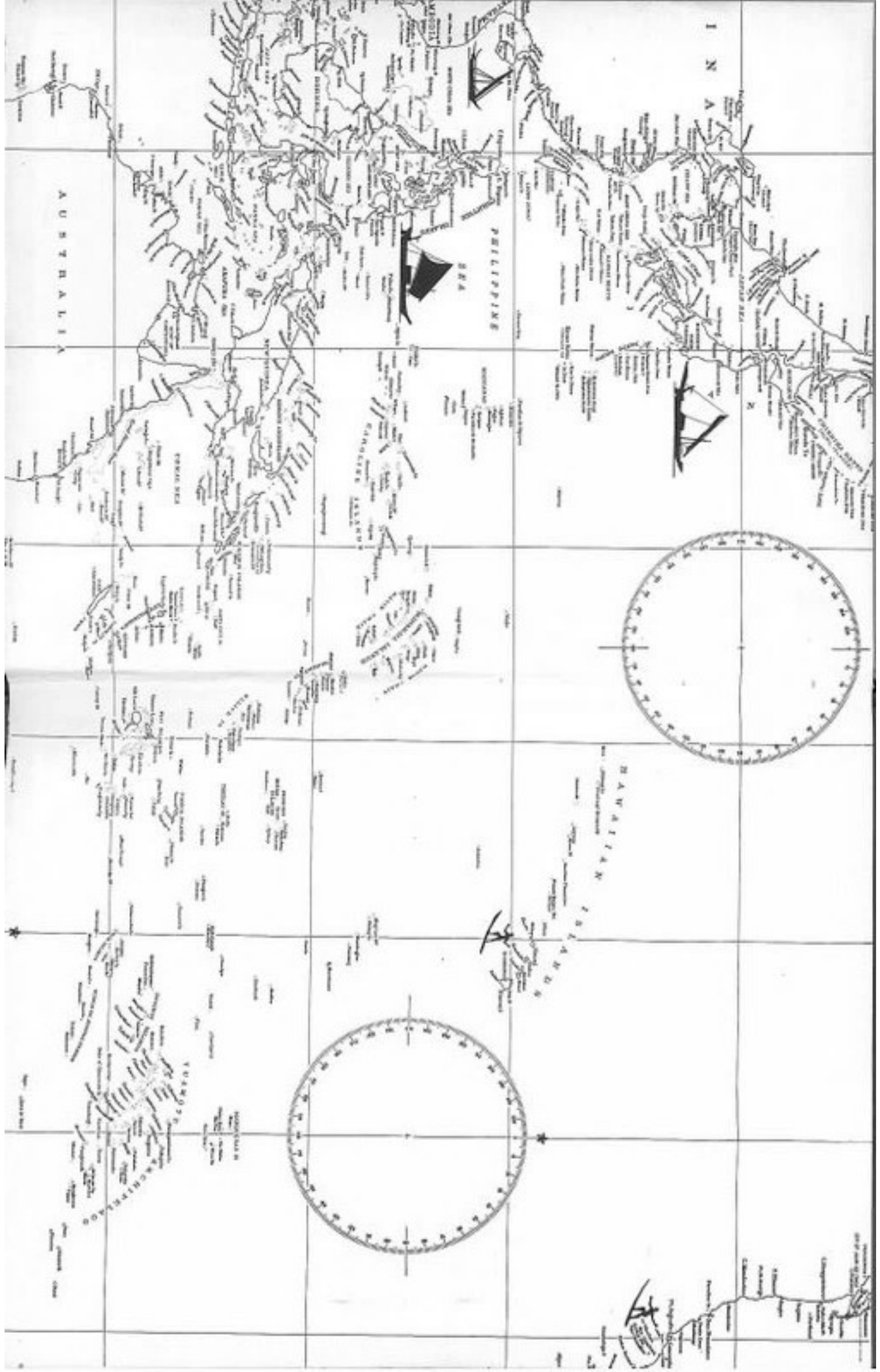
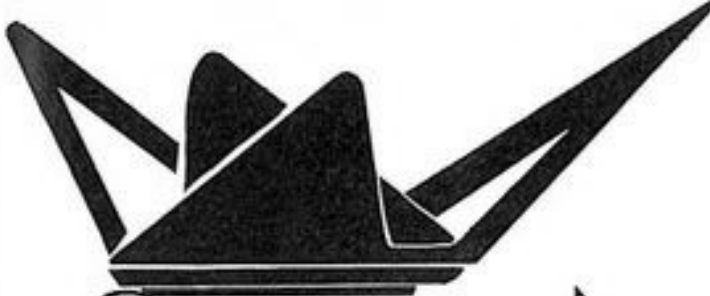


K



K





1966

KUSS

KIND







CAPTAIN'S MESSAGE

In continuing her record of meeting all commitments, the KING has replaced a Heavy Cruiser and her escort and set the standards in the Tonkin Gulf.

In looking through this book, you will remember that this was a hard working cruise and take justifiable pride in the KING and her accomplishments. We have labored long and hard. Together, we have shared the trials and joys of Destroyermen who go down to the sea in ships. We have shared the satisfaction that comes from top-notch professional performance in the service of our country. To each and every KINGSMAN I render a proud salute and a WELL DONE.



CHARLES P. TESH
CDR USN
Commanding Officer



Commander Tesh, a native of Winston Salem, North Carolina, was educated at the University of North Carolina and was commissioned an Ensign at the Midshipmen School, University of Notre Dame on 9 July 1945.

As a junior officer, Commander Tesh served in communications and gunnery billets in destroyers USS SAMUAL N. MOORE (DD-747) and USS LYMAN K. SWENSON (DD-729) during the period 1949-1952. He continued his sea tour thereafter in USS MANCHESTER (CL-84) as First Lieutenant. In 1954, he was assigned to a three-year tour with the Armed Forces

Special Weapons Project (now Defense Atomic Support Agency) at Albuquerque, New Mexico.

Commander Tesh returned to the U.S. Pacific Fleet in 1957 as Executive Officer, USS BRAINE (DD-630), a position he held until assuming command of USS FORSTER (DER-334) in 1959. In 1960 he was ordered to duty on the staff of the Chief of Naval Operations in the Strategic Plans Division. Upon completion of the tour, in 1962, he attended the Army War College, Carlisle Barracks, Pennsylvania.

In July 1963, Commander Tesh reported to USS ORLECK (DD-886) and was Commanding Officer of that Yokosuka, Japan-based destroyer until November 1964 when he was ordered to command of the San Diego-based missile frigate, USS KING (DLG-10)

On December third, 1966, Commander Tesh was relieved by Commander Read as Commanding Officer, USS KING (DLG-10)



EXECUTIVE OFFICER



LCDR RAYMOND W. HINE
Executive Officer

Lieutenant Commander HINE, born in Bridgeport, Connecticut, served in the Navy for two years as an Aviation Electronicsman after which time he received a Secretary of Navy appointment to the Naval Academy, where he was commissioned an Ensign upon graduation in 1955.

As a junior officer, he served in all Gunnery billets on the USS DORTCH (DD-670). On his next two ships, USS GYATT (DDG-1) and USS GALVESTON, (CLG-3), which he placed in commission, LCDR HINE served as ASW Officer and Missile Launching and Handling Officer respectively.

He next spent two years at U.S. Naval

Post-Graduate School, Monterey, California enrolled in the curriculum of Ordnance Engineering. Upon graduation he was assigned to the USS LITTLE ROCK (CLG-4) as Missile Officer and Nuclear Weapons Officer.

In 1963, LCDR HINE went to the U.S. Naval Academy where he taught courses in Systems Engineering and Automatic Control Systems. He was then transferred to the U.S. Naval War College at Newport, R.I. where he attended the Command and Staff course until June of 1966, when he was then transferred to KING.

WEAPONS DEPARTMENT



LT BILLY G. MILLER
Weapons Officer

"The word from higher up".

The action arm of the KING's fighting capabilities lies in the Weapons Department, in-charge of the ship's Anti-Air, Surface, and Anti-Submarine Weapons.



WF DIVISION



Front Row: ROBIESON, D.G., FTM2; MELOSH, D. A., FTM2; MONREO, R. J., FTM1; GLASER, C. G., FTM1; COLLINS, W. S., FTM1 Second Row: JOSTES, K. A., FTM3; BUMCE, R. A., FTM3; ANAUO, W. J., FTM2; SIEVERS, J. E., FTM2; WALDEN, M. S.,

FTM3; PHILLIPS, G. J., FTM3 Third Row: THOMAS, W. L., FTG2; MARCUS, R. L., FTM3; HUDSON, J. D., FTM3; BURNETT, L. L., FTG3; ZAPIEC, E. S., FTSN; STELLO, A. P. Jr., FTM3; PIAZZA, F., FTSN



LTJG D. R. MUEHLENBROCK



FTCM S. C. ROACH



WF Division is charged with the maintenance of all Fire Control equipment. This includes Missile and Gun Directors, Fire Control Radars, and Computers.



The gear is up - - - but ANAUO is down.



1700 liberty on Sundays?



SMITH shows ZAPIEC how to rack up a free game.



Advance and be recognized for a job well done.

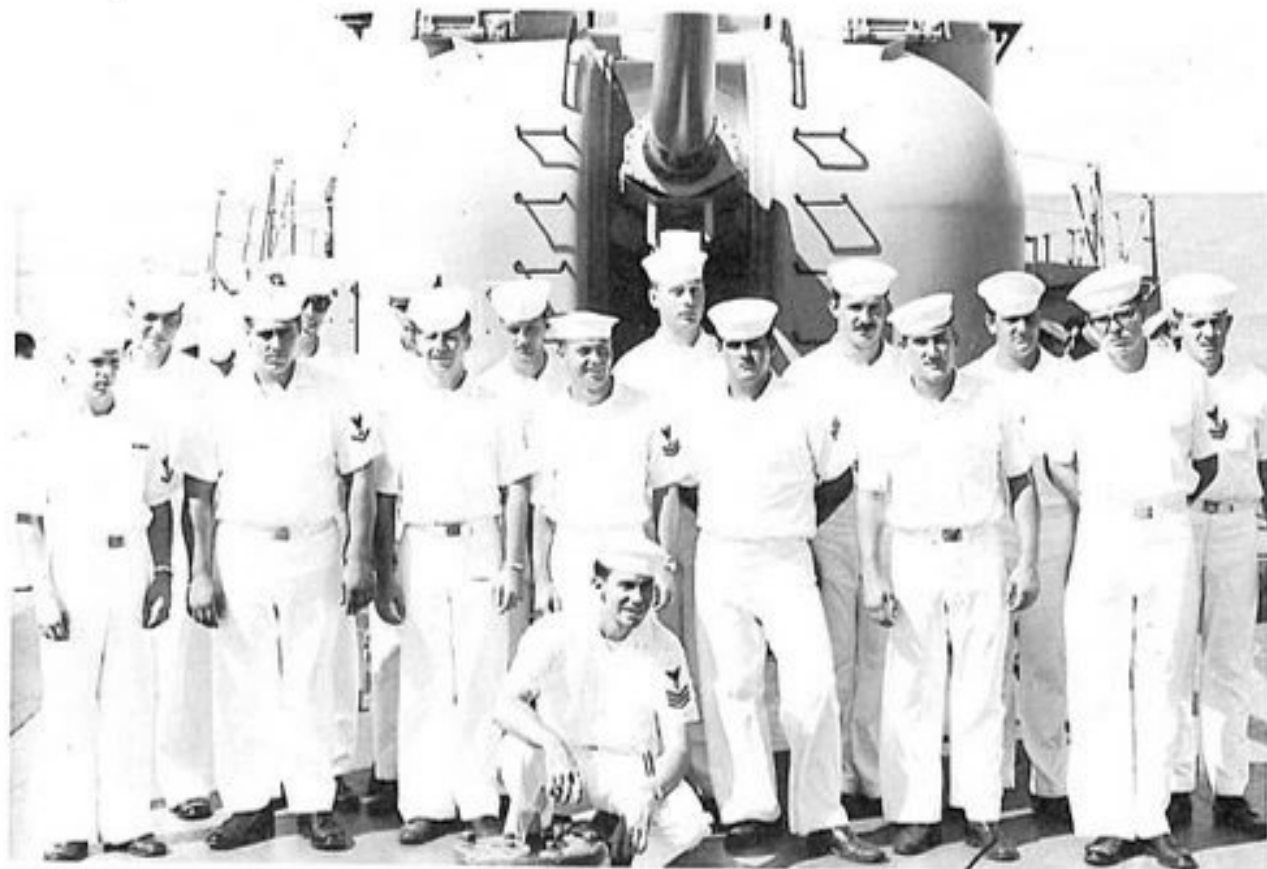


Just cool it, PHILIPS.



Zap! There goes perspiration.

WG DIVISION



Kneeling: PALMORE, S., FTM1 First Row: MOON, E., FTM3; RHEA, J., GMG3; JONES, J., SN; PRICE, E., GMG2; VASHON, W., SN; HODGES, T., SA; BENEDICT, L., FTG2 Second Row: SMITH,

D., FTG3; COSTA, G., FTG2; DICKHART, R., SN; HUGHES, S., FTG3; MORRISON, P., YNSN; FOWLER, J., FTG3; WEBB, H., GMG2; MELROSE, R., GMG3



LTJG D. T. BRADBURY



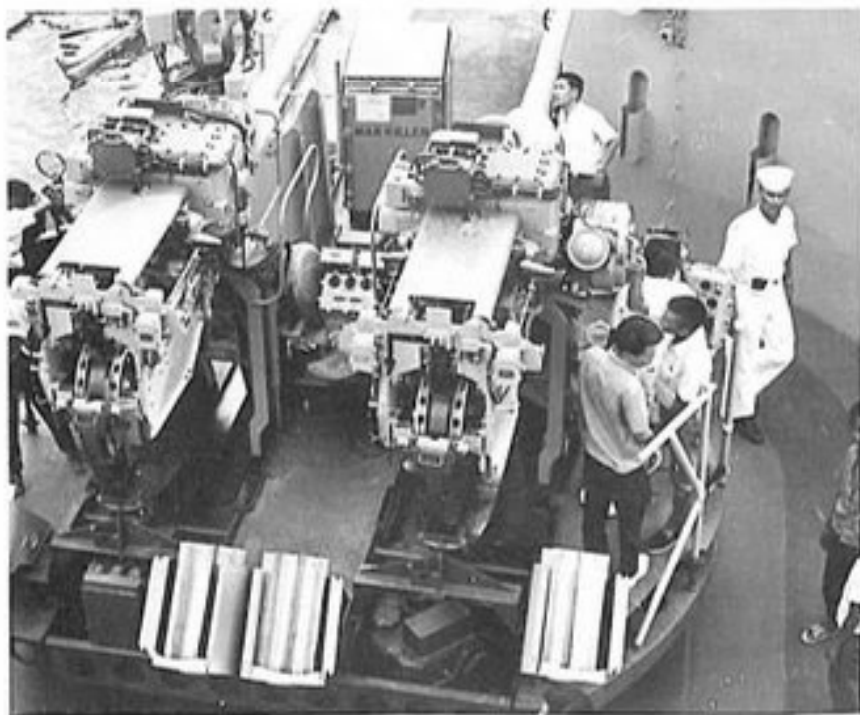
WG Division maintains the KING's guns in the finest traditions of the Navy.



A little midnight oil for RHEA and DICKHART while WEBB supervises.



A thousand and one checks.



We show with pride.



Dream lover.

WM DIVISION



First Row: TEDDER, J., GMM3; STRECKLEIN, J., GMMSN; BROGAN, C., GMM2; SANTOCONO, M., FTM2; WILSON, J., FTM2

Second Row: KENNEDY, J., GMM3; VILLARREAL, R., FTM2; HOOD, G., GMM2; REITH, R., GMM3; BURNS, D., GMMSN



LT C. F. BROWN



ENS R. W. HARDY

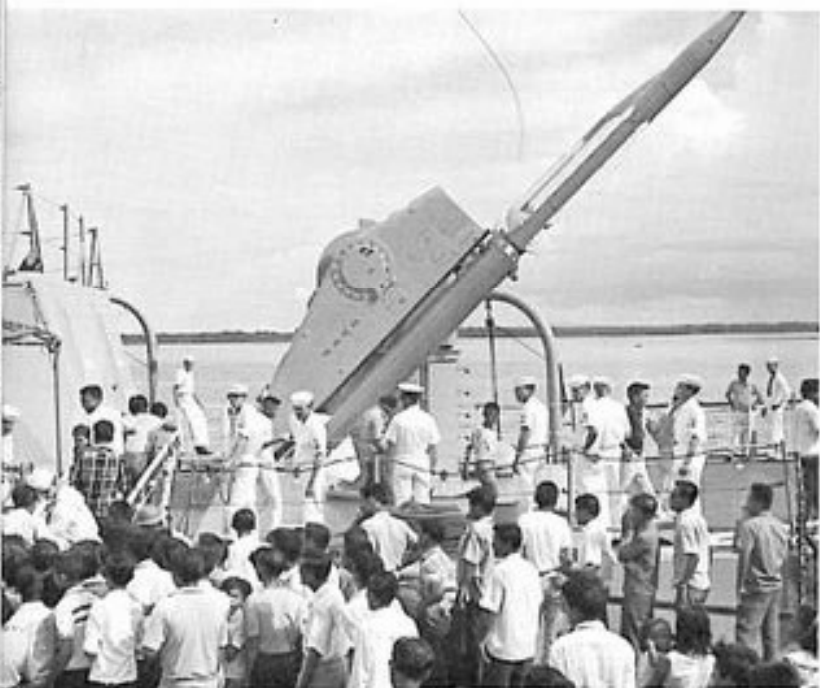


AMSTUTZ, G., GMMC

WM division is responsible for the constant readiness of our missiles and associated launching system. As such, the men of this division maintain the high standards of professional excellence which are necessary to insure proper fulfillment of KING's mission of Anti-Air Warfare.



VEASEY, W. GMMC



Cebu's citizens viewed the KING's Terrier Missile System with awe.



All smiles. . . . BESHEARS, STUTZ, and BROGAN.



"The Dinamic Duo"



Photogenic STUTZ shows the ET's the proper way to strike a pose.



ENS HARDY gives a Missile demonstration to Weapons boss, Supply boss and the people of Cebu.



BURNS, TEDDER, REITH-----STUTZ: Not shown.

WD DIVISION



Kneeling: WARD, J., BMSN; HANEY, L., BM2
First Row: HAITH, W., SN; NORMAN, T., SN;
CARROLL, M., SN; DITTON, G., SN; SPAHR,
J., SN; MARSHALL, G., SN; DENTON, D., SN

Second Row: STILSON, G., SN; CONLEY, D.,
SN; SWAFFAR, J., SN; MCELFRISH, C., SN;
STERLING, C., SN; SMITH, V., SN; SOLESBEE,
W., SN; BARTON, L., BMSN



LT E. R. LA MASTERS



WD Division with the longest tradi-
tion in the Navy, maintains the deck
spaces and ground tackle and mans
the bridge.



Kneeling: SIMPSON (Buckwheat), BM3;
O'CONNOR, J. BM3 First Row: FLIPPIN, I.,
SA; DAVID, K., SN; DOSS, L., SA; BROOKS, T.,
SN; PRICE, D., SN; BEAUDRIE, K., SN; HERDE,

D., SN Second row: NELSON, A., SA; WOODCOCK,
P., SN; ANDERSON, B., SA; KESSLER, R., SN;
SELLERS, D., SA; SMITH, J., SA; KELLY, W.,
SA



BMC G. D. BROWN





"O'CONNOR, Have you seen KESSLER and SELLERS anywhere?"



The day they dropped the rice on us.



"Oscar"



DAVIS applies a little knowledge.



"Won't you wear my ring around your neck?"



"Mon said there would be days like this"



WA DIVISION



Front Row: (Kneeling) WILBANKS, J., GMG2; THOMAS, R., STG2; Middle Row: WHITE, W., STG2; TERREL, J., STGSA; MULLINS, R., SN; HILL, J., SA; THEMAN, L., STG3; SMITH, C., TM3; SOUZA, G., STG2 Back Row: WIELENGA,

J., STGSN; LONG, D., GMG2; BELLMAN, R., STG3; BLEDSOE, R., SA; GARY, M., STG3; ERDMAN, J., STG3; SHIELDS, G., STG2; BILBY, D., STGSN



LT T. H. MEALEY Jr.



STC D. A. NESBITT



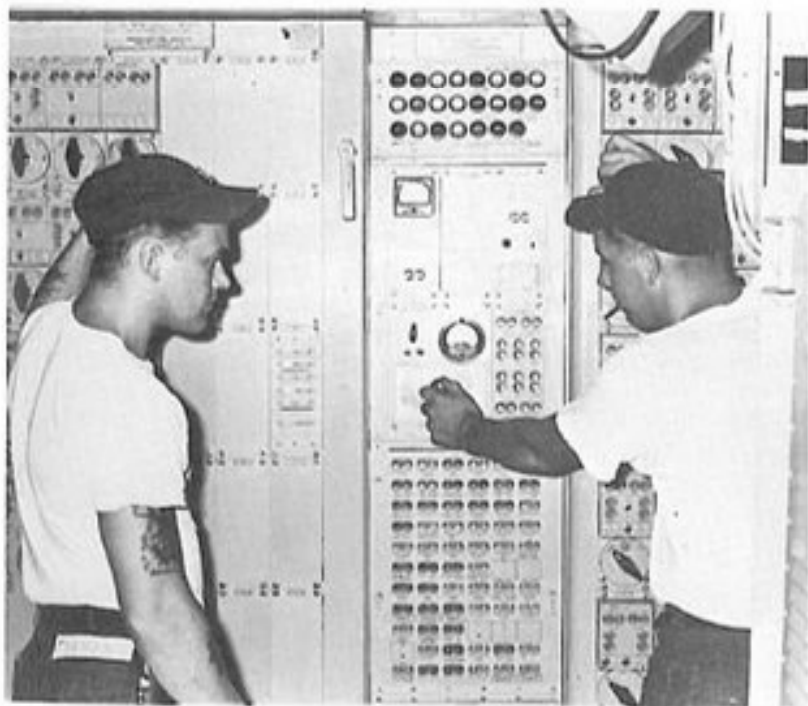
GMGC J. R. STYLES



WA Division is the Anti-Submarine arm of our Destroyer, searching the sea with Sonar and destroys with ASROC and conventional torpedoes. This cruise they have also assisted in manning Combat Information Center and organizing Intelligence.



RISE "N" SHINE



BELLMAN shows THIEMAN a little short cut-----



-----and BILBY repairs the damage.



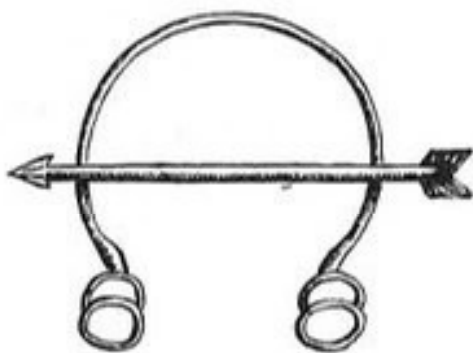
Would you believe a large Porpoise?



I wonder if the "Phantom's" been in here?



A shady character.

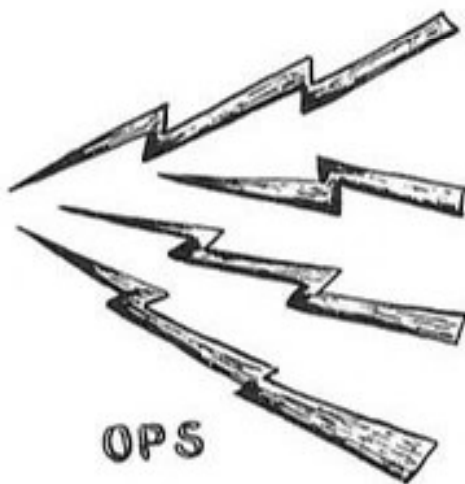


You can always force the issue.

OPERATIONS DEPARTMENT



LT. J. H. CYR, JR.



Operations provides the vital communications required between KING and shore or other ships and aircraft. CIC (Combat Information Center) collects, evaluates, and disseminates tactical information from many sources, including NTDS to ensure maximum operating efficiency coordination.

OC DIVISION



Kneeling: JACOBS, K., SM2; HARNISHFEGER, D., RM1; First Row: HEIDECKER, J., RMSN; PONANILLA, J., RM3; HANNEMAN, M., RMSN; LEACH, W., SM2; GEORGE, J., SMSN; COOK, H.,

RM2; HOOVER, R., RM3; JONES, S., SM3 Second Row: PROEHASKA, J., RM3; DE LONG, R., RM3; TUBBESING, K., RM3; FRANCE, L., SMSN; RANTZ, C., RM3; TUBBESING, K., RM3; BIGGS, R., RM3



LTJG G. L. COLNAGHI



ENS H. L. TURNER



SMC G. M. PHILLIPS



ENS D. J. KLINKHAMER



RMC F. (N) CARTER



Someone burning peach cans?



DE LONG listens to a long range shipping over lecture.

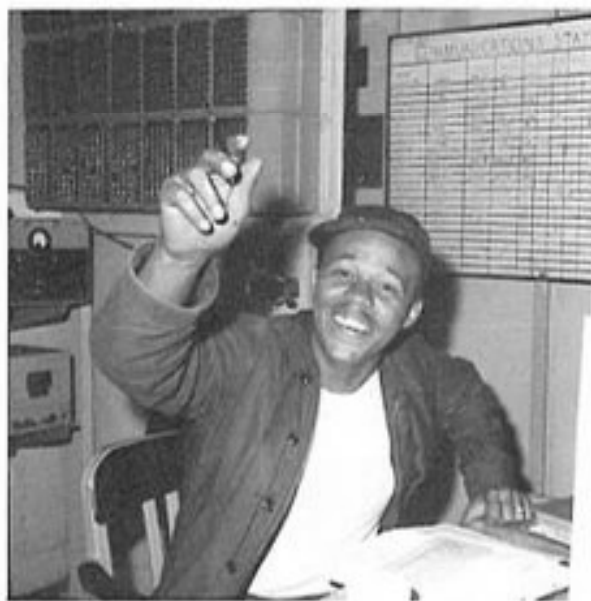


LEACH sends a little flashing light.



Own ships training.

OC Division keeps the KING in touch with the Fleet. Equipment may go down but OC is always up.



Hey, Joel



Jake logs in another days training.

OI DIVISION



Front Row: HARGROVE, T., RD1; CALLISTER, R., RD3; GRANGER, G., RD3; WILSON, V., RD2; SMITH, E., RD2; WEISGERBER, C., RD3; FIFER, D., RD1 Back Row: CLARK, L., RD3; GAUTREAU,

V., RDSN; PILGER, J., RD3; WHITE, D., RD2; JONES, W., RD3; CHRISTENSON, J., RD1; GLEASON, L., RD1; CROOK, J., RD3



LT L. A. CANGINELLI



LTJG H. W. ROADS

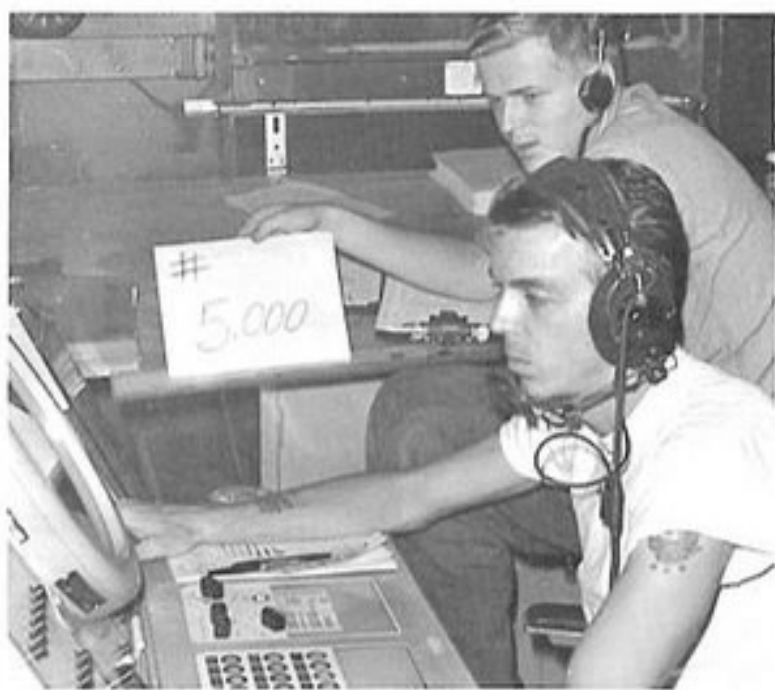


Kneeling: WALKINGSTICK, D., RD1; LOFTIS, R., RD1; SHORT, W., RD1 First Row: BENDER, H., RD2; TURNER, G., RD3; DUNKLE, T., RDSN; FITZPATRICK, T., RDSN; NEWCOMB, J., RD2

Second Row: NUCKOOLS, D., RD3; McGLAUN, B., RD3; SWINTOSKY, S., RD3; CARVER, P., RD3; BONE, T., RD2



RDC J. W. BOTA



Number 5000 checks in with SHORT and McCULLOUGH



A surprise Happy Birthday for GLEASON



GRANGER plots a solution

CIC was the heart of KING during her tours on SAR and PIRAZ stations. The long hours of tireless diligence expended by every member of the CIC team significantly contributed to the fine reputation enjoyed by KING during this cruise. The three hostile aircraft shot down as a result of this ship's timely warnings and accurate intercept information and the seven abandoned pilots recovered through efficient KING SAR efforts merely give tangible proof of "Combats" superb performance.



The "In" Crowd.



"ROGER HOW YOU!" YOU'RE CLEARED
TO HAVE PLATS AND STRIKE CENTRAL
AT YOUR DISCRETION"



WILSON, the happy chow hound.

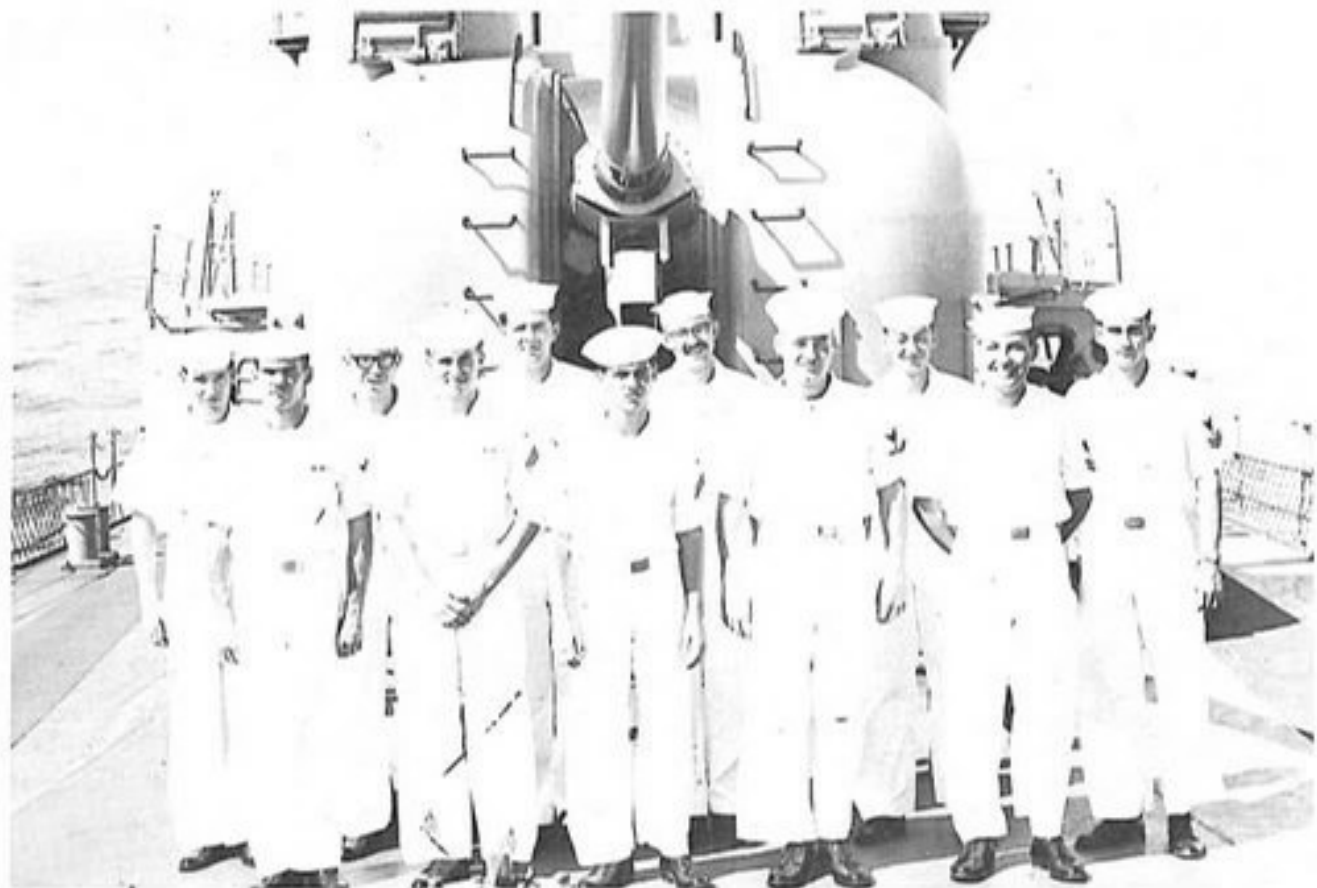


They didn't teach me this in "A" School.



GRANGER checks the "Beaver."

OE DIVISION



First Row: COPELAND, R., ETR3; MANNING, M., ETSN; LANE, P., QMSN; CASEY, M., ETN3; MISHLER, R., ETR2 Second Row: CASAVANT, R.,

ETR2; RUSSELL, E., ETR2; DIEHNEL, J., ETR2; TABLER, L., ETR3; McCORKLE, M., ETR3; DE BRULER, M., ETN2



LTJG L. M. HOLLOWAY



WO1 R. L. CRABB

7
1
2
3
4
5
6
7
8
9
10
11
12
13
14
15
16
17
18
19
20
21
22
23
24
25
26
27
28
29
30
31
32



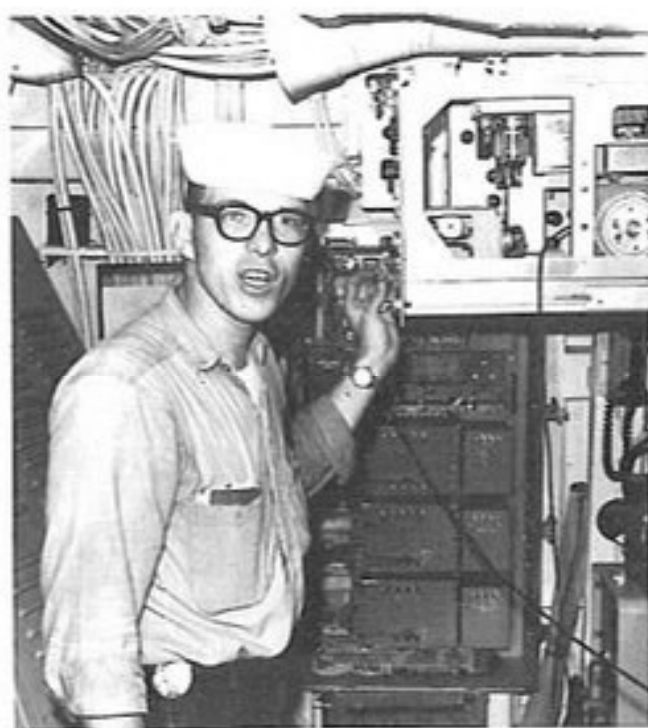
ETCM K. L. NEWMAN



DSC A. M. LINDHOUT



ETC A. R. WESTFALL

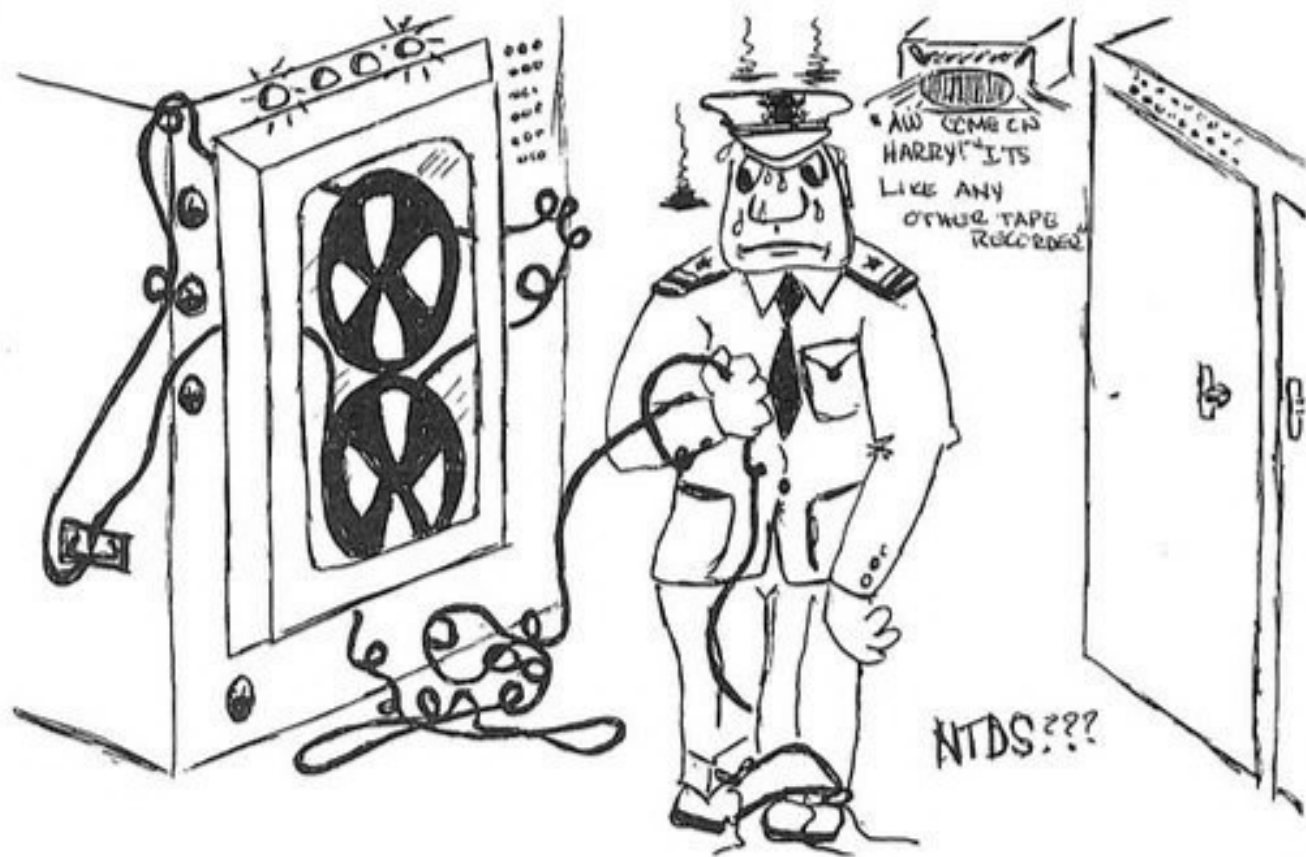


RUSSELE sings along with "A" Link.



HARKEN to the call.

OE Division maintains the Electronics equipment that separates the KING from other Frigates. Be it Communications, Radar Equipment or NTDS, the ET's and DS's of OE are on the job until the equipment is back up.



ENGINEERING DEPARTMENT



LT D. D. KREGLO



Chief Snipe initiates shipwide training



ENG

Engineering provides the power to propel the ship through the water and is responsible for the upkeep of machinery, and internal electrical and communications equipments.

EB DIVISION



First Row: CATHEY, D., BT2; PRETTNER, D., FN;
CROWTHER, C., BT3; HULT, A., BT3; TODASH, A.,
FN Second Row: GOTTSCH, L., BT2; PELHAM, J.,

FN; GRECO, J., BT2; GOODMAN, R., FN; REID, B.,
BT3; HAMLETT, L., FN Front Center: KILBURN, J.,
BT1



LTJG F. W. ROECKNER



EB Division supplies the steam, at 1200 PSI to the KING's power plant to keep us on station. Their fine work has contributed to the KING perfect record in never missing a commitment.



First Row: CLEERE, J., BT3; NUTTER, J., FN;
STATNICK, R., FN; KISER, B., BT3; WAGNER, R.,
FN; UNTAGE, R., BT3 Second Row: SKINNER, M.,

FN; WHITE, C., BT3; PARSLEY, J., BT3; YAROS,
H., BT2; PANNIEL, R., FN; CHASE, R., FN



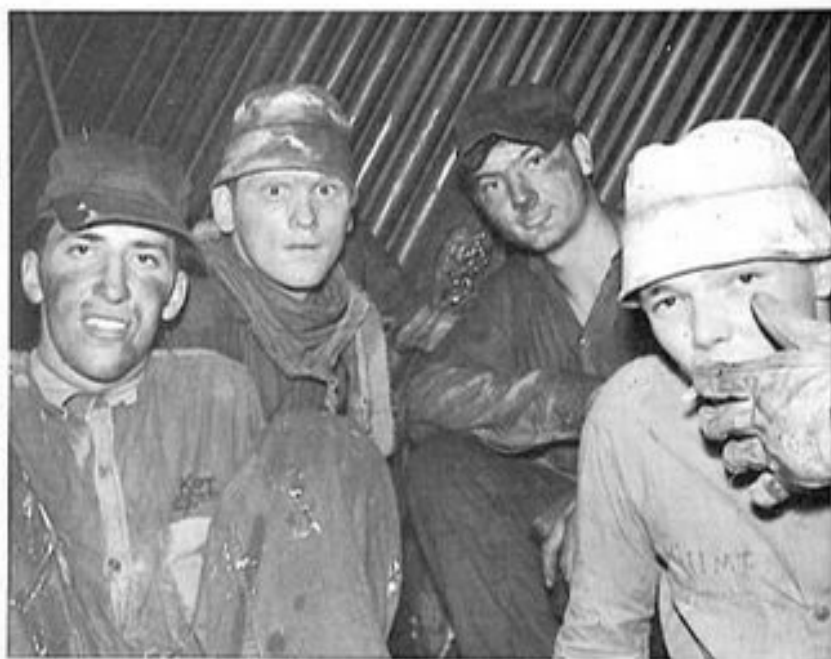
BTCS R. J. GUNTHER



BTCS B. F. ALLEN



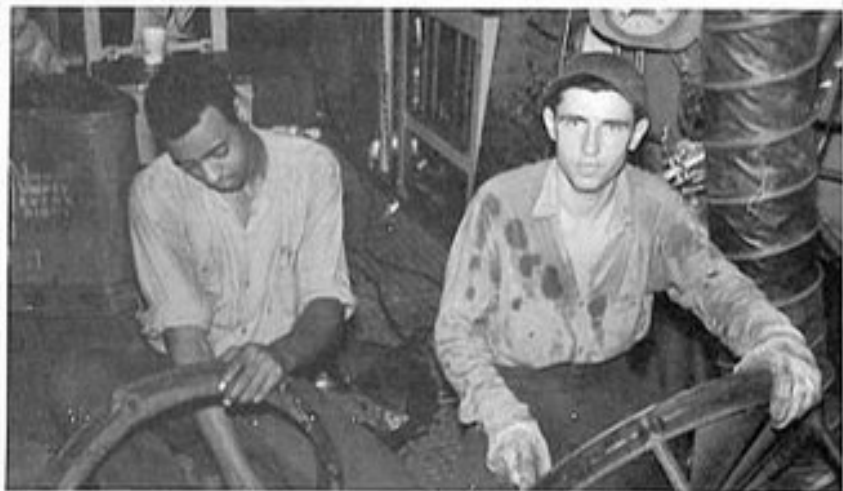
Oil Spill? What oil spill?



Clorox needed here



"Got ya" GOTTSCH

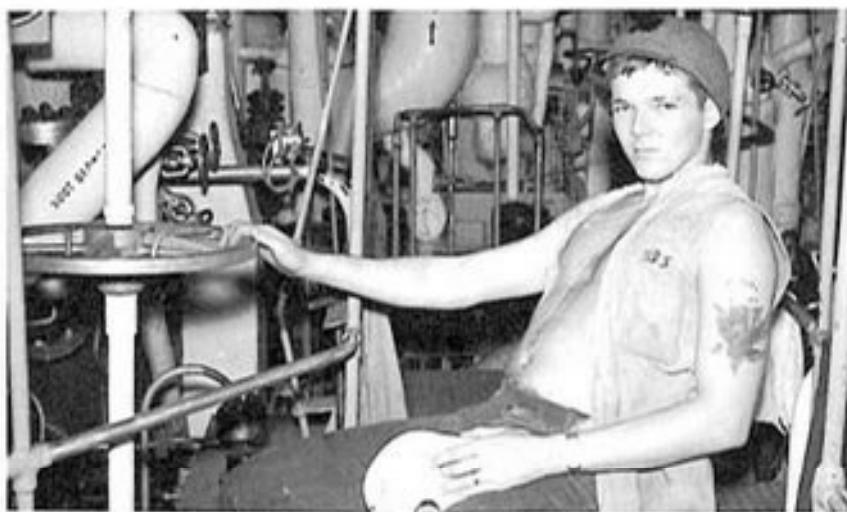




Did the phantom leave this?



YAROS has everything under control.



GRECO poses with one of Hollywood's finest.



ER DIVISION



First Row: SCOTT, D., MM1; CARR, L., EN1; BLACK, H., Jr., EM1; Second Row: HEMBREY, C., FN; DAWSON, D., IC2; POGORZELSKI, A., EM2; PLUCIENNIK, L., IC3; GILLOCK, C., IC2; HANSON,

G., EM3; SIMPSON, G., IC3 Third Row: HAMLIN, B., SFM3; RICKER, R., FN; EMERICK, D., FN; OAXACA, J., IC3; WOODWARD, R., EM3; JENNINGS, J., SF1; NUNLEY, R., FN



LTJG K. A. DRISCOLL



EMCS J. A. PING



First Row: CHAPMAN, W., DC1; SOLIS, A., EM1
 Second Row: RILEY, J., FN; ELLISON, R., IC3;
 RIGGS, A., FN; MABARY, R., MM3; McCAULEY,
 C., IC1; HILL, G., EM3; LOPEZ, M., IC2; Third

Row: RIPPEY, J., EM3; McGILVARY, J., MM1;
 LEEK, C., IC3 TYREE, J., SFM3; HUBBARD, R.,
 EMFN; EXKSTEIN, R., EN2; THORNBERRY, K.,
 FN; PRICE, D., FN



SFCS A. E. McRAE



ICC H. E. BANKS, Jr.

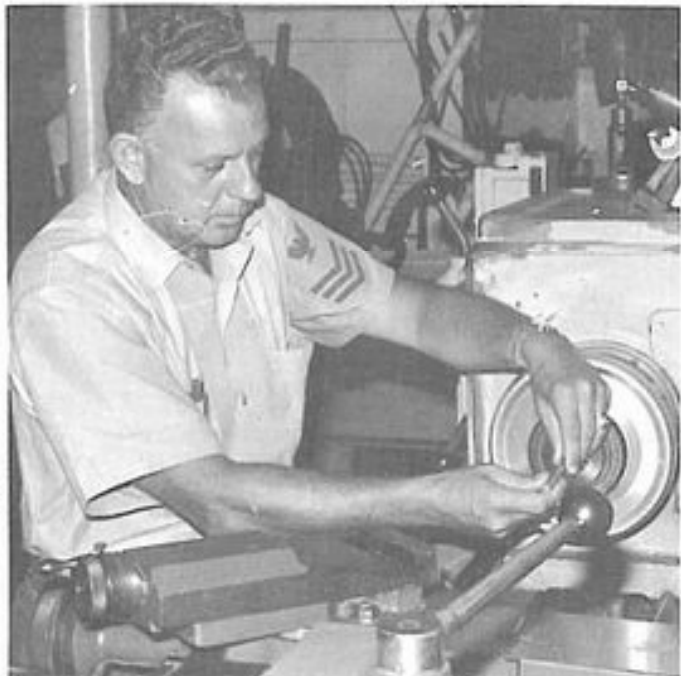
ER Division is charged with the overall repair and safety of the ships Hull. Also the maintainance of the internal communications and electrical equipment. In addition, this cruise they have supplied a crew to our flight deck on call day and night for flight quarters.



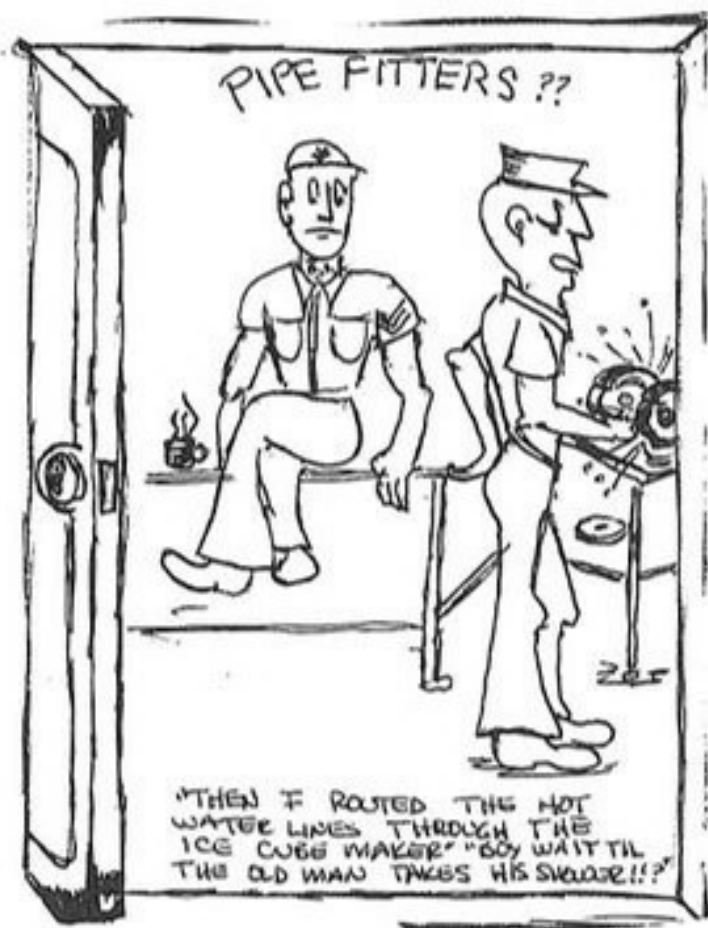
I'd be glad to write my own inscription, Mr. DRISCOLL



A little acetelyne.



LITAVISH runs a busy shop.



A little time out for coffee



Art and artist



Just for drill.....



MAYREIS, you really think we can get away from it?



The next one is for me.



Down in the Bat Cave.

EM DIVISION



Kneeling: CARTER, D., MM1 First Row: PITTS, L., MMFN; LA ROSE, C., MM3; LINN, J., FN; CORDOVA, P., MM3; PHILLIPS, J., MM3 Second Row: NICHOLS,

T., MM2; DENISAR, J., MM3; DE WALT, C., MM3; CHIPCHAK, R., MM3; ANDERSON, K., FN; KOYAIDES, W., FN



LTJG D. O. MOLNAR



SPCM A. L. WOLFE



First Row: BOYLE, D., MM1; BISHOP, E., MMFN;
LENTS, R., MM2; FUNKHOUSER, E., MM3; SPENCER,
J., MM3; FOURNIER, F., FN; KINDRED, E., MM1

Second Row: Fredricks, G., FN; NELSON, R., FN;
McGINLEY, R., MM3; SHERRELL, W., FN; JANTOSIK,
L., FN; MORE, H., MM2; HARRIS, L., MM2



MMC C. E. HARTMAN

The EM division has the vital responsibility of providing the ship with mobility, electrical energy and good water. Our Machinist Mate's "down in the hole" utilize the energy in the 1200 PSI steam to give us up to 100,000 horsepower for propulsion, 3,000 KW of electric energy for our varied armament and electrical gear and 1,000 gallons per hour of fresh water.



BTC E. (NMN) KINDRED



Have they got the chair rigged yet?



CHIPCHAKI



MUGGS, I thinks he's flipped-----

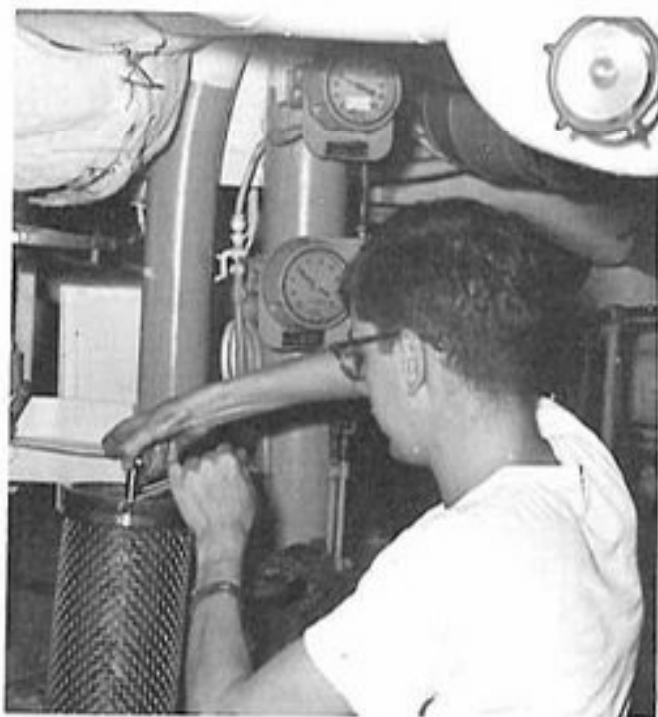




Two hours & fifteen more.



NO BISHOPI



CHIPCHAKI



And in the third hour of my lecture I will cover-----



Accurate logging is essential.



Looks like titivation time.

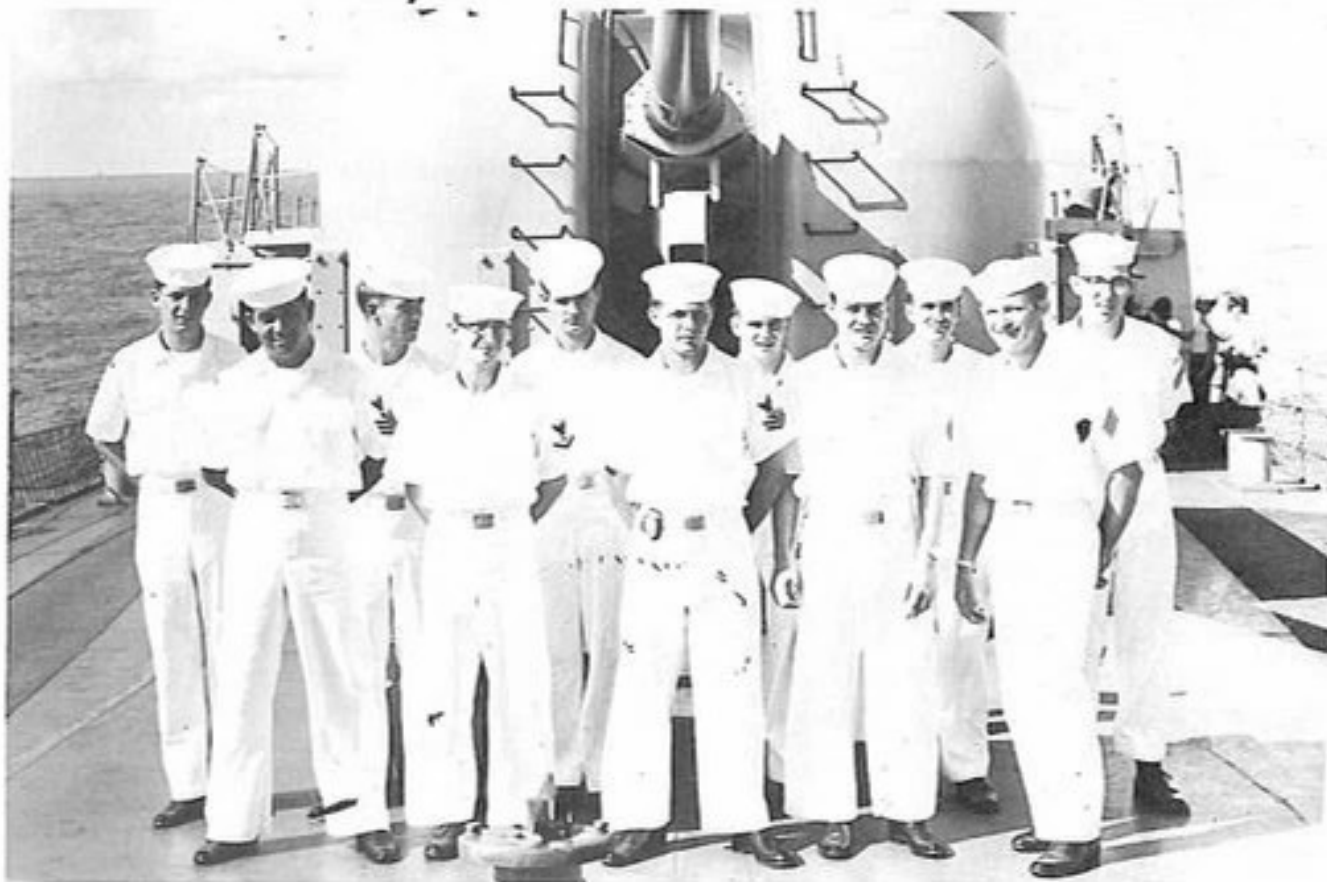


Picasso of the Engine room.



I don't see any bats in here.

EXECUTIVE/NAVIGATION DEPARTMENT



First Row: HERNANDEZ, A., PN1; MASON, W., YN3;
GILLOCK, C., IC2; DE BECK, J., YNSN; VINSON, R.,
QMSN; SUTTON, D., YNSN; MAYBRIER, G., QM3;

FREDERICK, P., PNSN; PHILLIPENAS, J., QMSN;
McCLENATHAN, E., PNSN; OLMEDO, R., PCSN



LT P. M. QUAST



Navigation is provided by the Executive Department. Through navigation, the ship's position is determined and courses plotted to guide its destination. In the Executive part of this department we have the YN's and the PN's, the "Unsung Hero's" of the Navy. Also included in this department are the Hospital Corpsmen and the Postal Clerk.



HMC R. F. IZQUIERDO



YNC P. M. CAPUA



I've forgotten what we lost.



This fix puts us on 101 going south.



Shooting the sun.



XO, the inventory shows us twelve bottles short.



DOC BALCH and PAPKE, HM3 bear in hand as injured KINGSMAN NORMAN is transferred-----



-----to awaiting help for an emergency evacuation.

SUPPLY DEPARTMENT

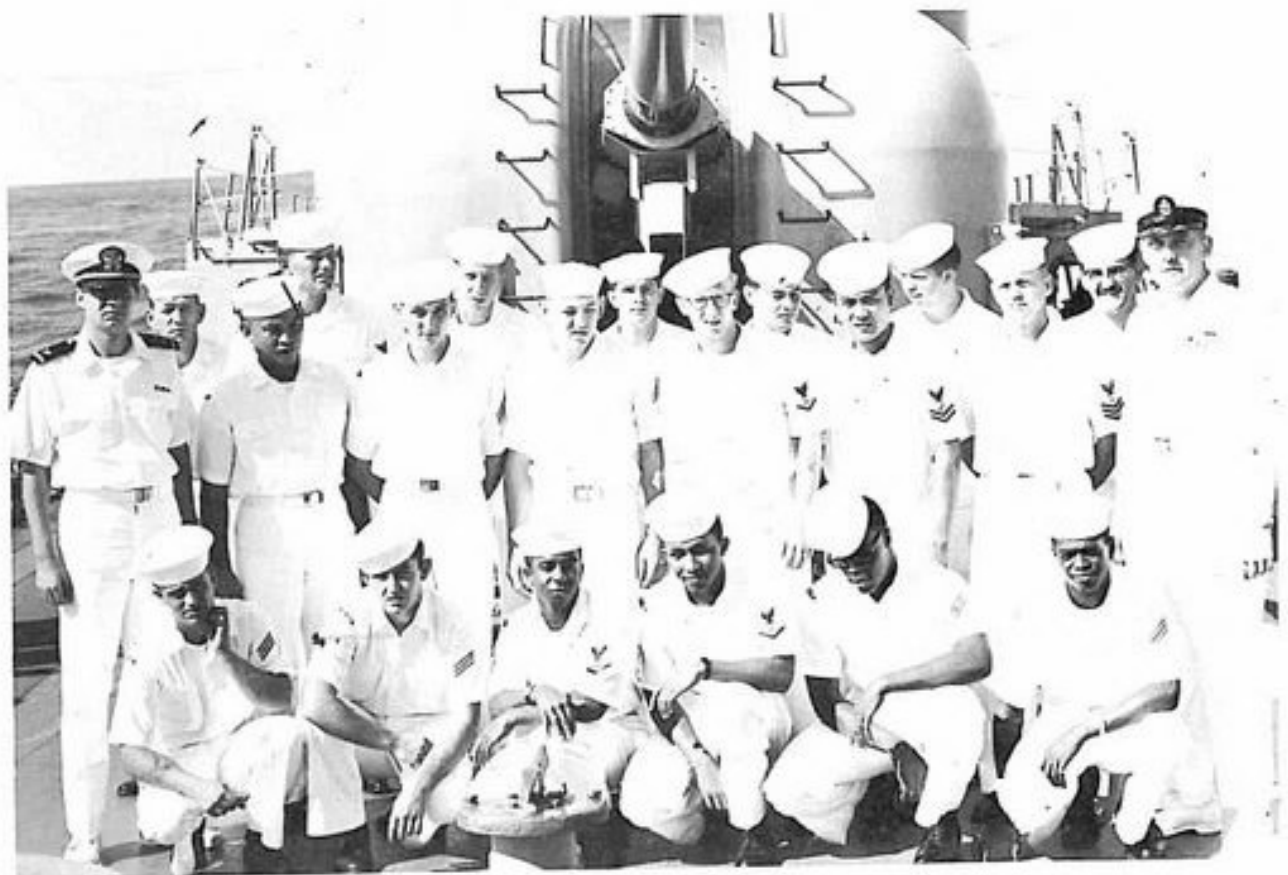


LT R. A. DROPP



Frustrated 1100?





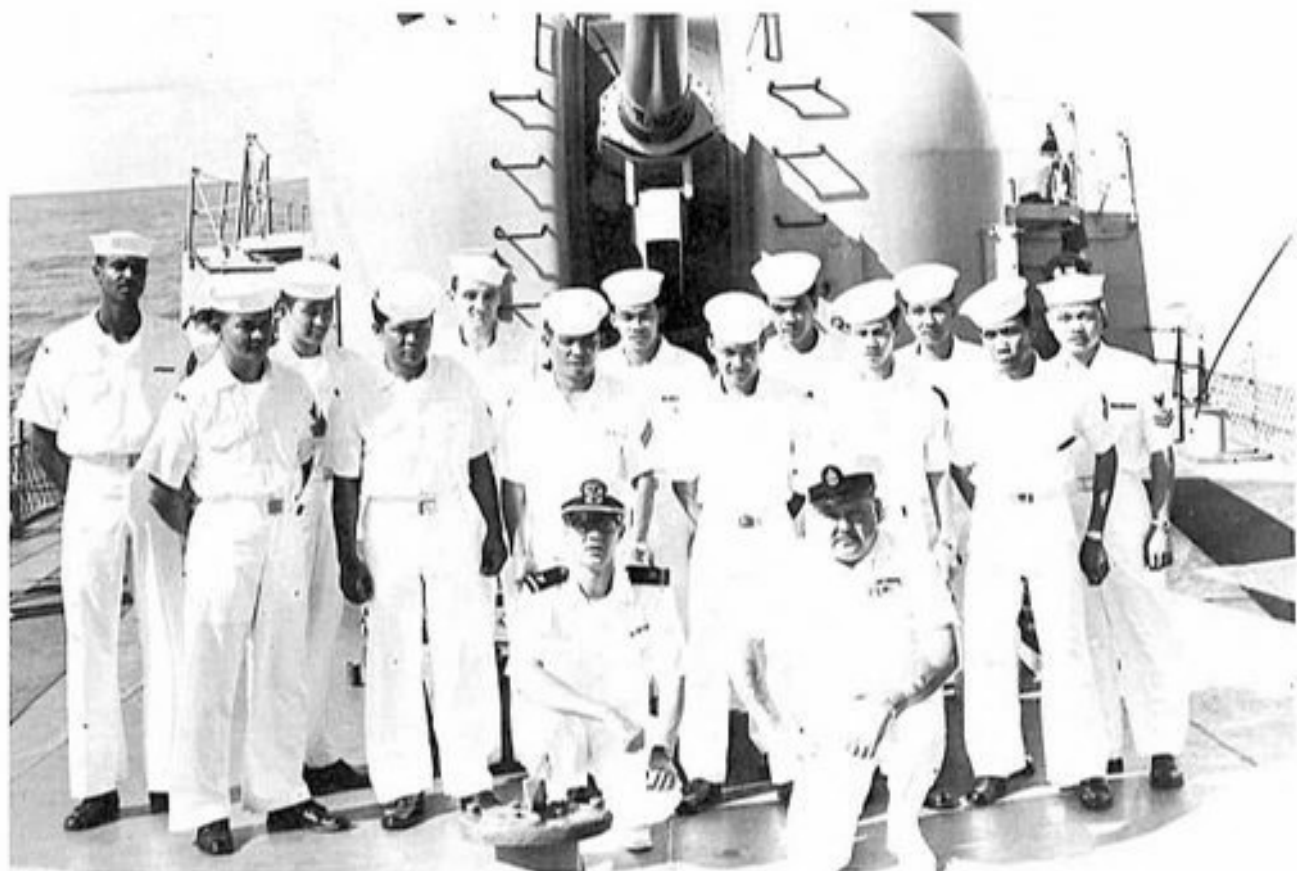
First Row: JACKSON, R., DKS;N; HURLEY, P., SN;
MURRY, R., SK3; HAYES, R., SK3; SIMMONS, E.,
SHSN, BARKSDALE, E., SN Second Row: ENS G.
D. HOOD; AGUNAT, F., SK1; MAUTEROR, R., SN;
WINFREY, J., SN; HOLCOMB, C., SK3;

TOMIAMPOS, C., DK2; HUXHOLD, M., SH1; SKCS
T. L. SMITH Third Row: HILL, J., SK2; MAHONEY,
J., SK2; ACKMAN, R., SN; HOTALING, J., SK3;
MARIN, R., SN; MURDOCK, T., SN; MILLIS, G.,
SH3



ENS G. D. HOOD
The "BULL"

A ship cannot stay at sea for long periods of time without provisions. This is one of the many tasks of the Supply Department along with Disbursing, Ship's Store and Barber Shop. Through Supply comes the procurement of repair parts, planning and preparation of meals, and operation of the laundry.



Kneeling: ENS G. D. HOOD; CSC J. M. ODEM
 First Row: LINAYAO, C., CS1; LUCERO, R.,
 TN; BEDANIA, T., SN; LOPEZ, F., TN; LEGASPI,
 L., TN; GUBANTES, M., TN Second Row:

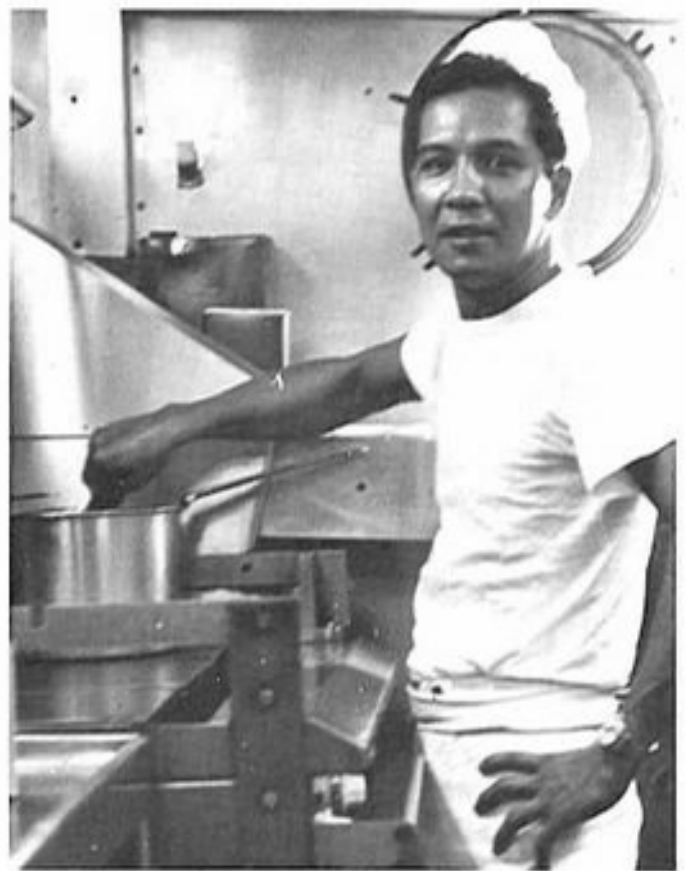
SANDOIS, W., SN; BOBADILLA, R., TN; MOORE,
 B., CS2; REYES, F., SD3; SHELLEDY, J., TN;
 CASTILLO, R., SD3; ARVIOLA, G., SD2



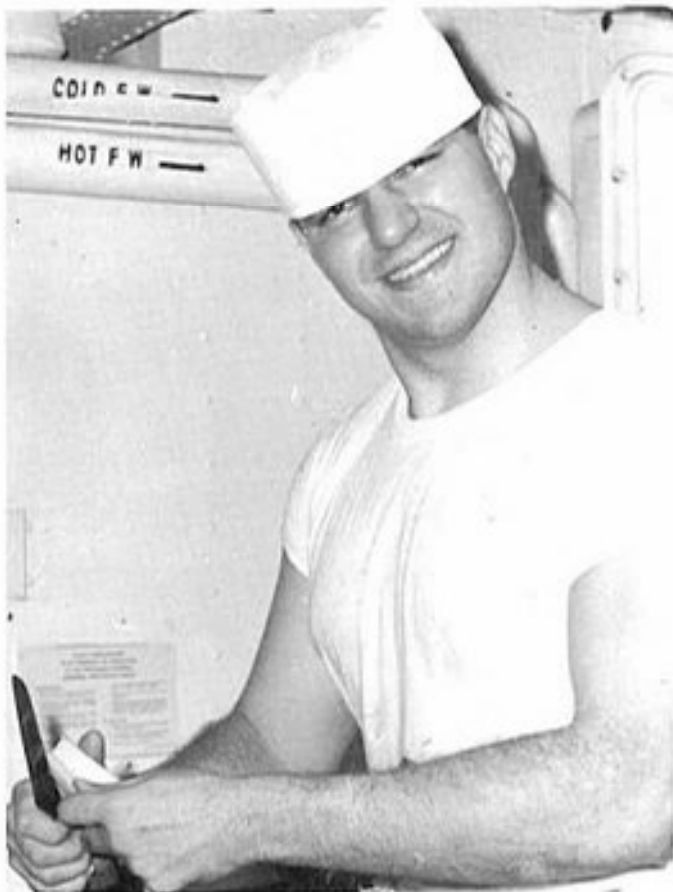
CSC J. M. ODEM



SKCS T. L. SMITH



Soups on!



Look Ma, no finger!

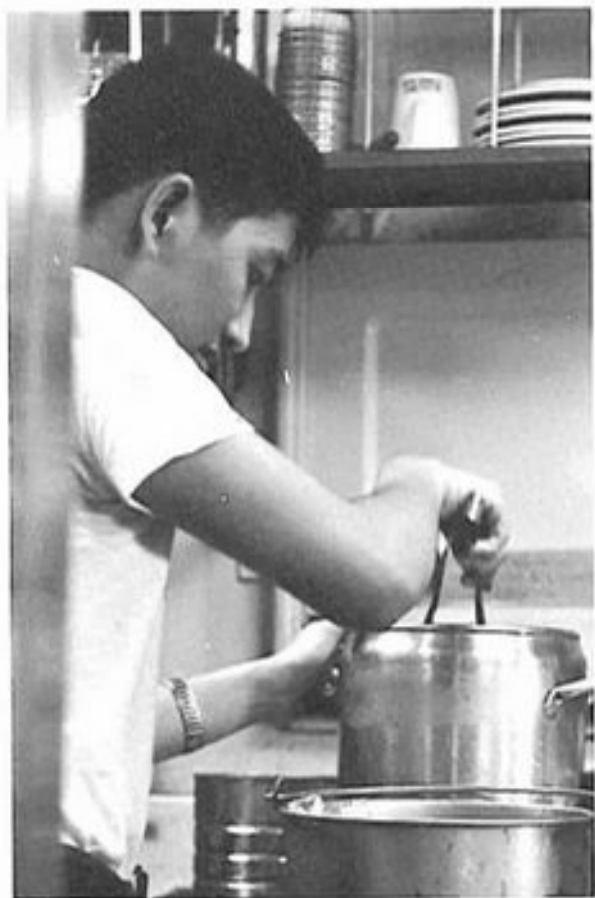




Fit for KINGS-----MEN!



Supply mans the Quarter Deck.



Bugs in the bug juice.

HELO DETACHMENT



LT RON STOKER and the omyassis dragon crew. (the simbols are for rescues and the quarter moons are for night rescues.)

The KING has another Division, it's air wing. During our time on station, our helo's made seven rescues and five assists. Outperforming was the byword which led Buccaneer Angel to be known as "the fastest helo in the Gulf."



LCDR LE GARE and his crew.



Flight deck crew stands by for any emergency.



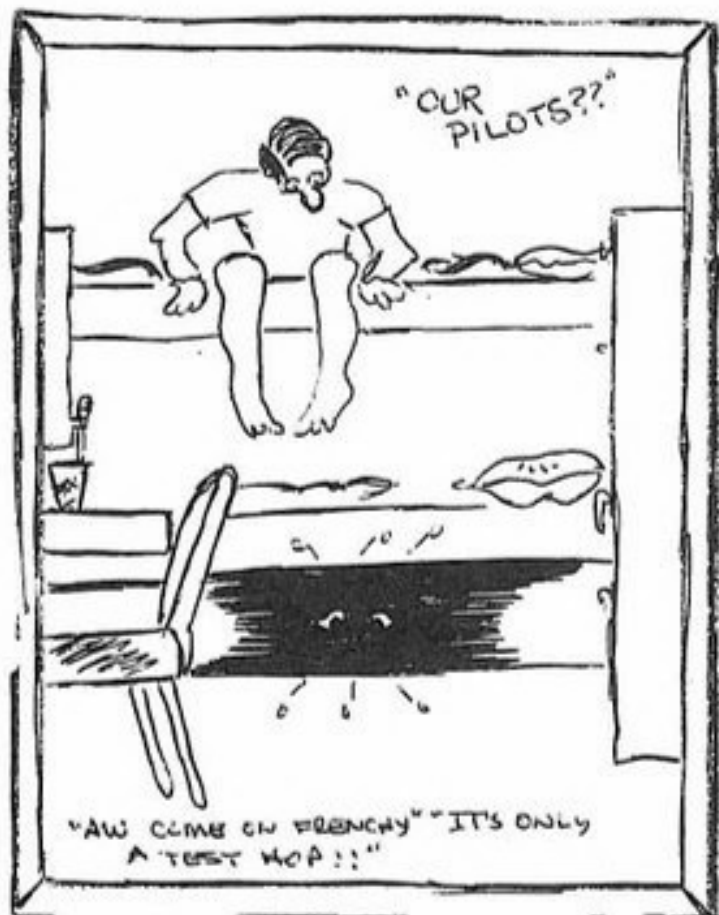
Maintenance on board included another KING first replacing an engine on station.



There was little our Zoomies couldn't do.



We refueled helos and crew alike.



Bringing in the mail.



Team work between OD and Pilot made for record launch times.



Celebration of a well done.



Pictures often speak for themselves.







UNREPS



Along side the CHICAGO



USS KING - KING of the Frigates.



Heavy load coming on.



Stations manned and ready to come alongside.



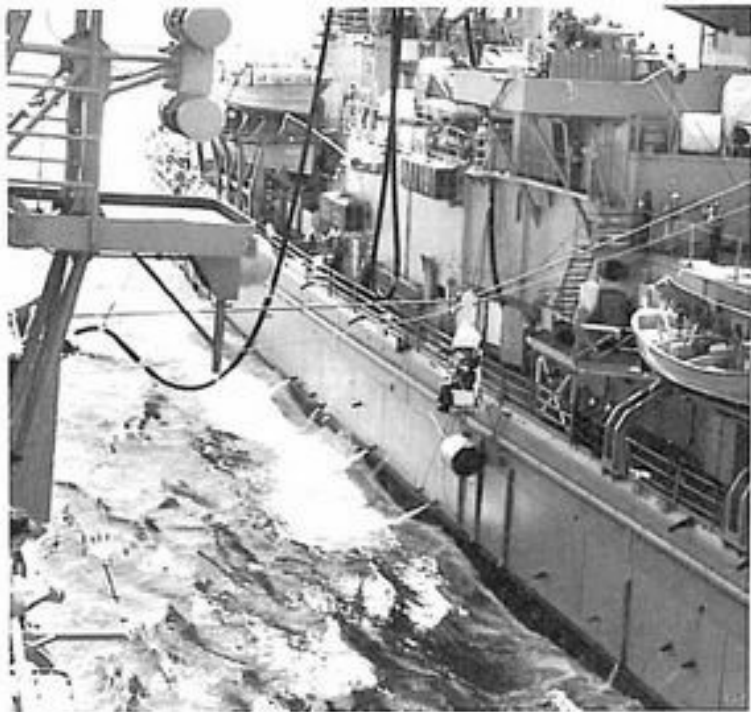
Where do we stow it all.



Unreps frequently involve transfer of personnel as well as materials.



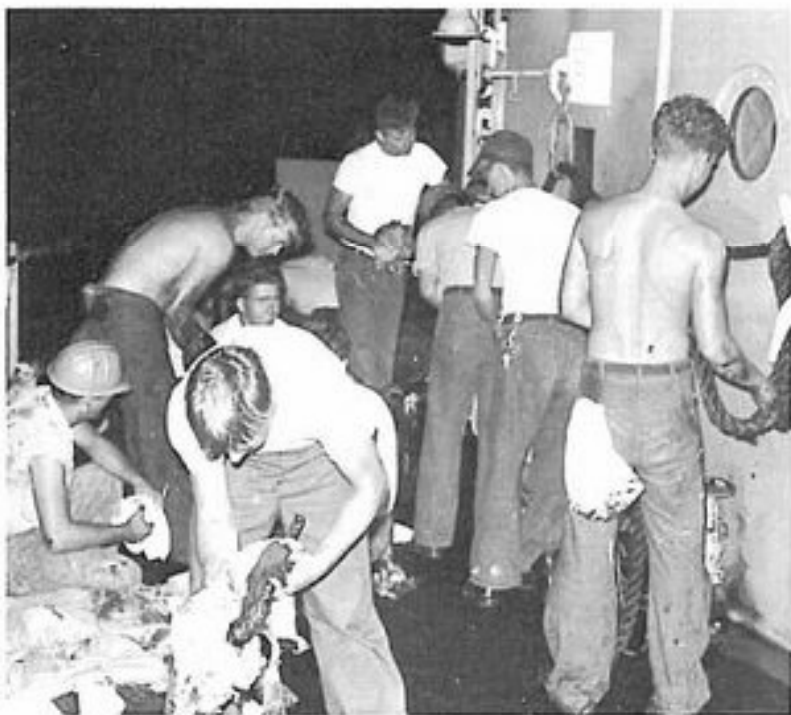
Along side the CHICAGO the helo gets into the act.

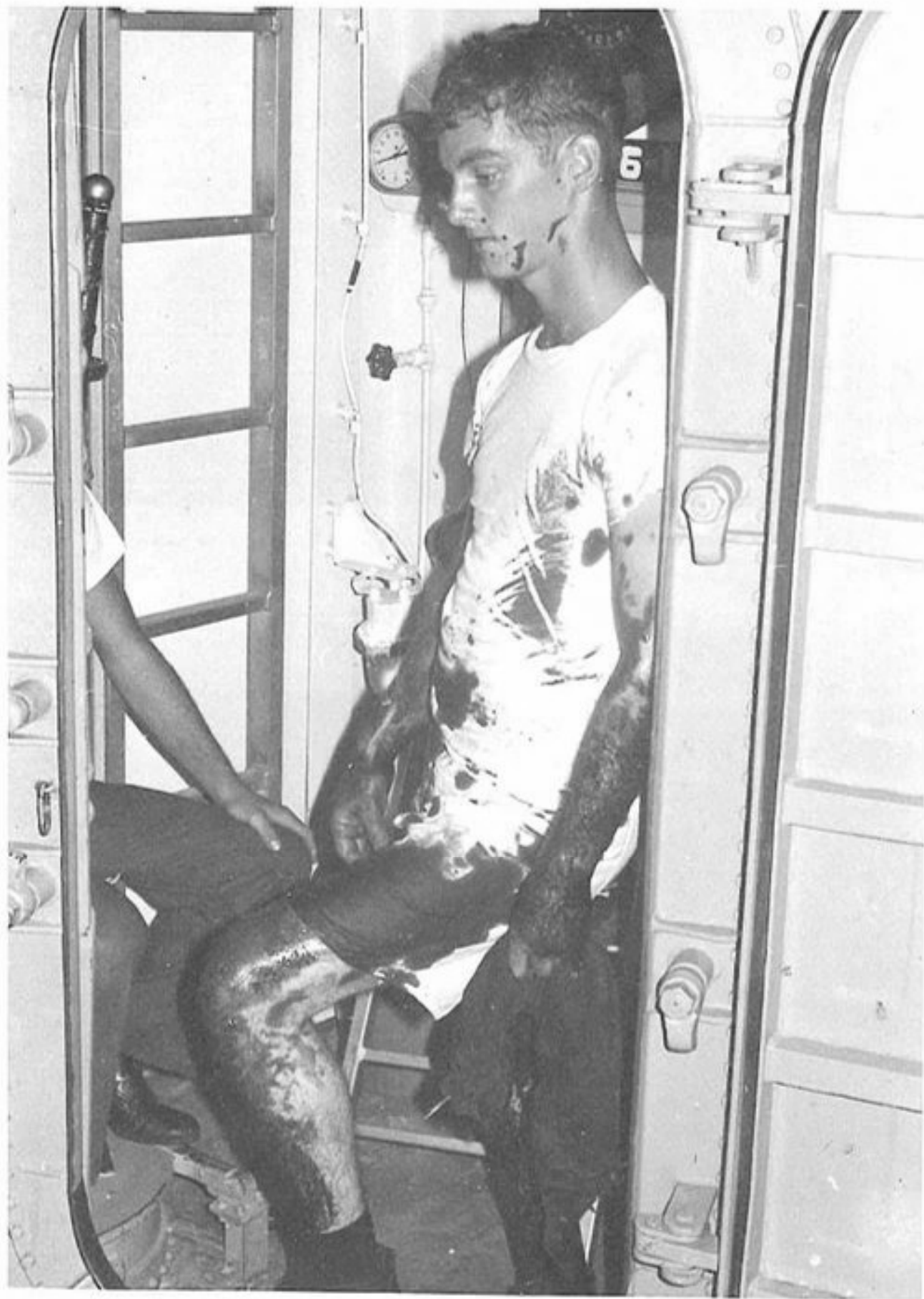


Follow the bouncing man.



OCCASIONALLY, we spill a little?





RE-ENLISTMENT



It is a proud service. The KING takes pride in the men who re-enlist and always strives to give them the recognition they deserve.



OPERATION HANDCLASP





In Cebu, the KING supplied paint and man-power to a local clinic.



Chaplin LENARD and crew members passed out gifts to children of a crippled childrens orphanage in Taiwan.



Funds for the various charity projects are obtained through voluntary donations.



We came as strangers and left as friends.



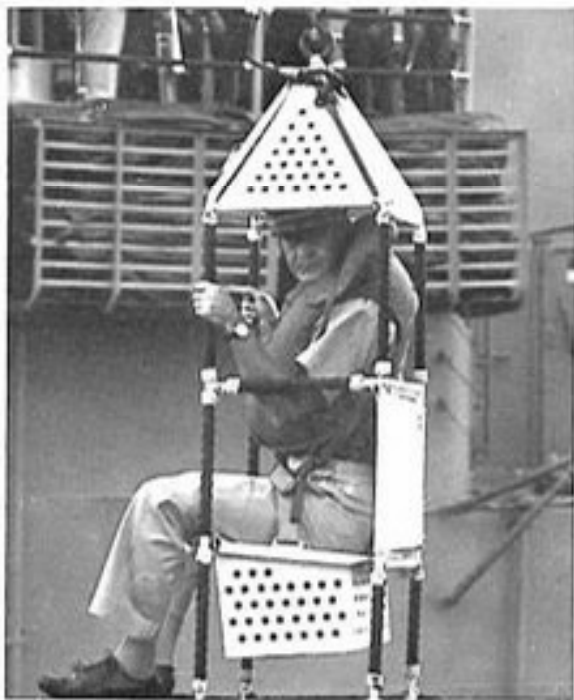


Look guys, all I said was that I'd fix you up with some hot dollies.

VISITORS



The KING extends her hospitality away from home. In Taiwan, she welcomed aboard the senior officers of the Nationalist Chinese Navy and Marine Corps.



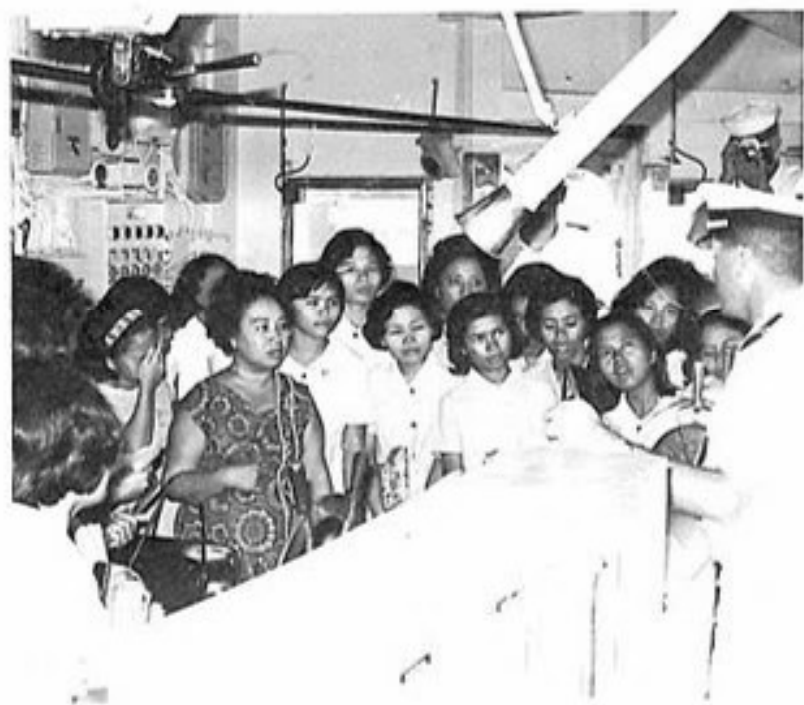
On station we receive a visit by COMCRUDES PAC and COMCRUDES FLOT SEVEN.



We averaged 4,000 visitors a day while in Cebu.

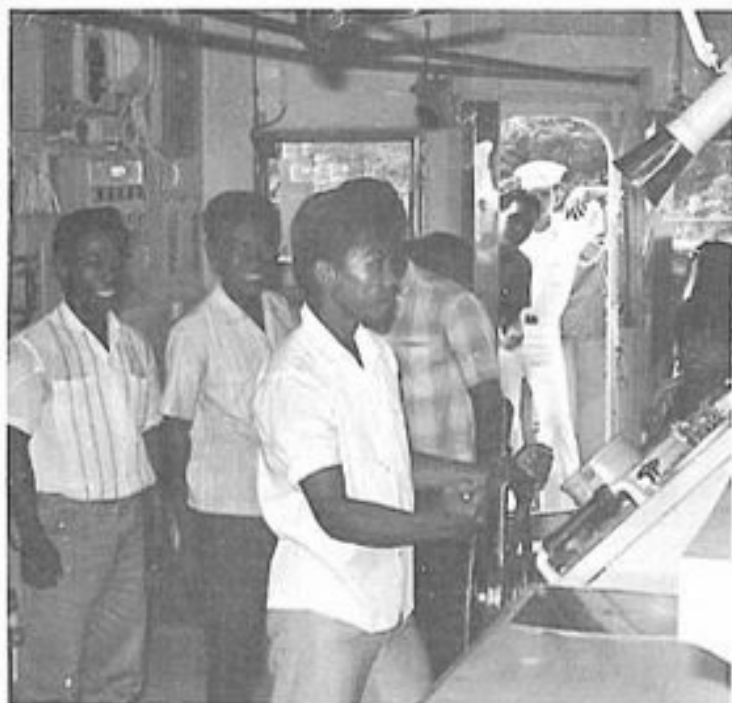


Visitors explored every nook and cranny of the KING accompanied by members of the crew.





There was always a line in front of the big eyes.

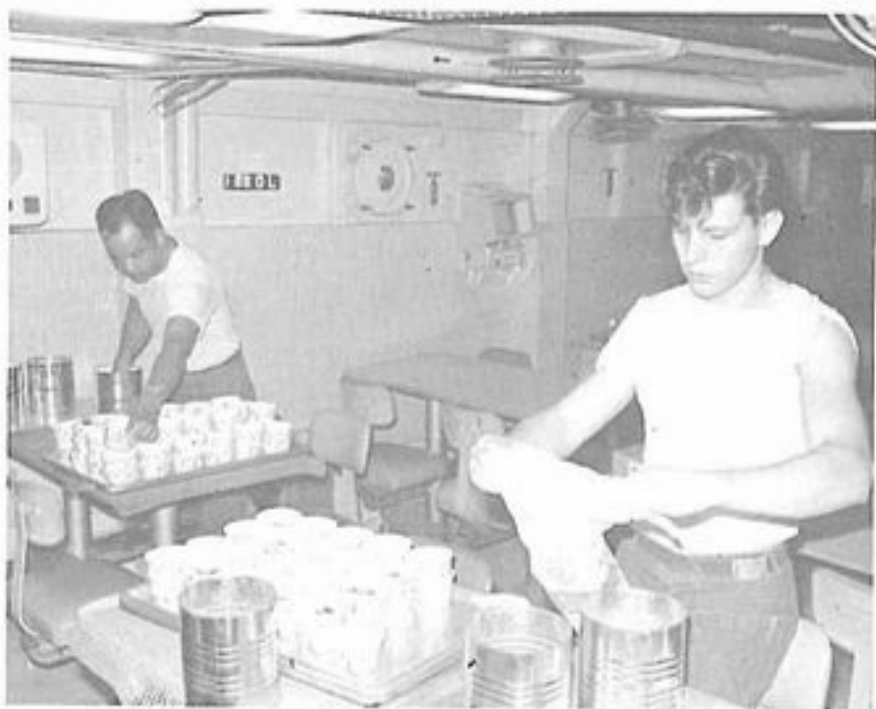


No one was going to take the wheel from him?



A serenade.

THANKSGIVING AT SEA



Preparations began early in the day.





Candle-light, soft music, and excellent service.



Wardroom seeking seconds.



Wake me in a day or two.

KINGS BIRTHDAY



On 17 November, the KING celebrated it's 6th Birthday.

Captain TESH presented plaques to plank owners: Chief NESBITT, Chief HARTMAN and First Class SOLIS.



As our plank owners were on board at commissioning, they lend the honor of cutting the cake.

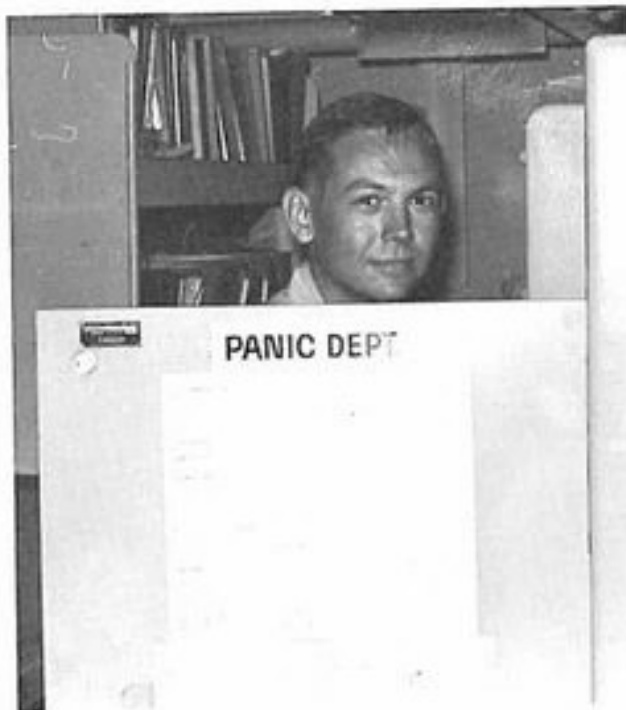
OUR CHIEFS



The Captain guests with the Chiefs at the CPO Club - they say the skipper held his own.



Chief McRAE looks agast at the way Chief ODEM puts down the chow.



Chief NESBITT pushed the button.



KENDRED and KILBURN appear before the ship's High Order of Chiefs before being entered into the Chiefs Mess.



Captain READ address our newest Chief.





You wouldn't believe it so to-night we're taking our cameras.

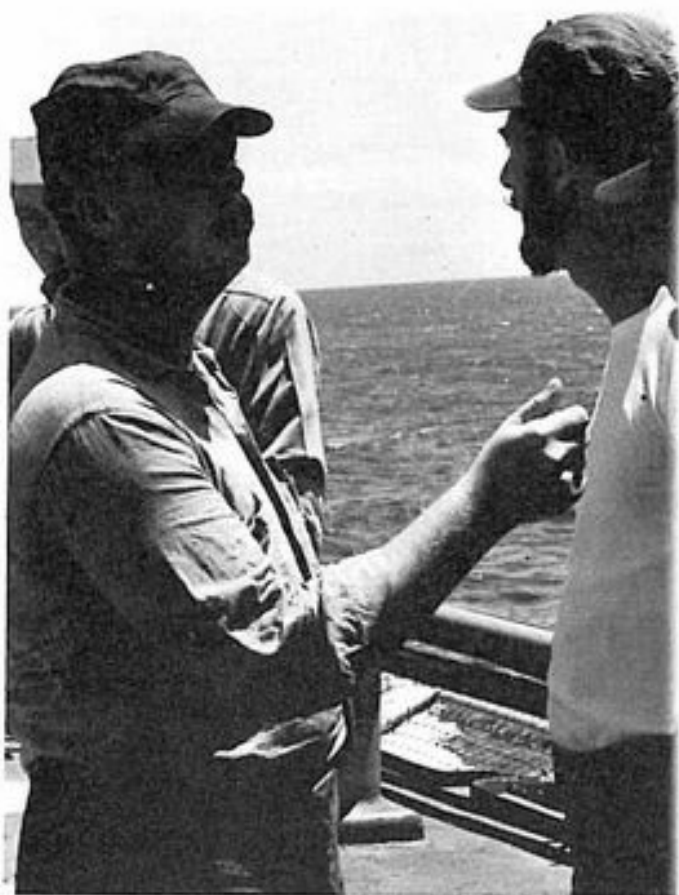


A meeting of the minds.



Yeah, what do you want?

BEARD CONTEST



Judge GLEASON gives the hearty hairy ones the once over.



The winners: Chief WOLFE, First Class BOYLE and SN VASHON.

SPORTS



In port periods in Subic provided KINGSMEN the opportunity to utilize the recreational facilities at both Cubi Point and Grande Island. Shindiging, swimming, sailing and water skiing were enjoyed by all - plus a lot of San Magu.



Hello Angels?



KING of the road.

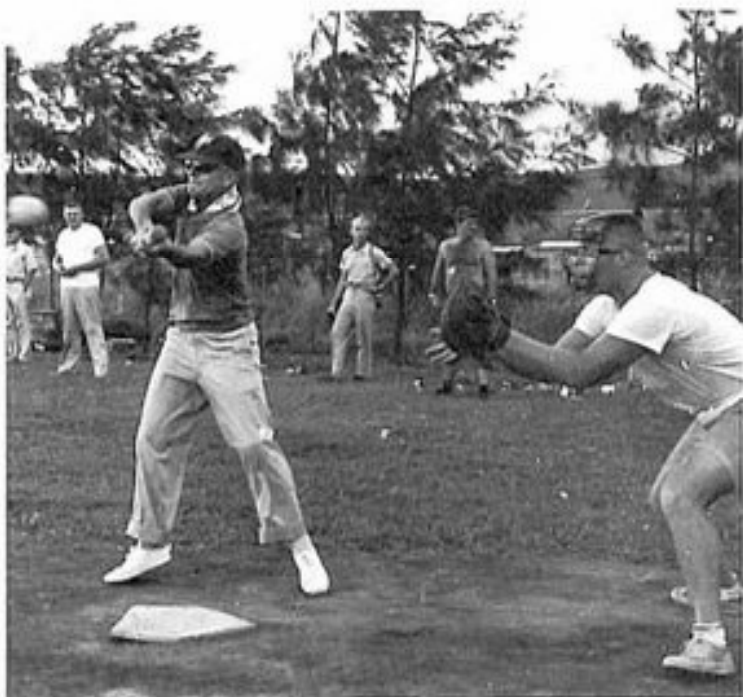


The monotony of extended periods at sea was often relieved by trap shooting from the fantail.





Captain TESH - switch hitter?



Commodore GANTAR connects for the Officers team.



KINGS crews took another game from the BUCANNON,



Let her rip!



Look at it sail!



San Magu's team showed up to watch.



The KING also took the between innings bouts.

ENTERTAINMENT



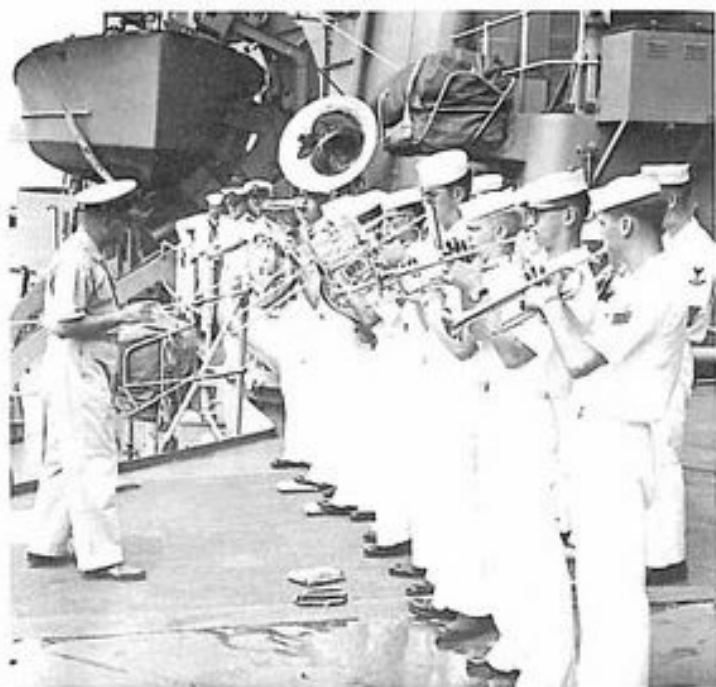
Organized this cruise, the KING'S own band, the "Unknowns" appeared on Television in Cebu. Practicing atop the Mouse House, they drew hundreds of listeners to the pier.



OUTSTANDING young crooner supported by Chief Snipe.



Sing along with Merrill.



The KING had the good fortune to be entertained by the COMCRUDESPEC band on the long return.



"A strummin and a pickin"



The Unknowns swing out!



Cool sounds from the Wardroom.

CHANGE OF COMMAND



Looking sharp.

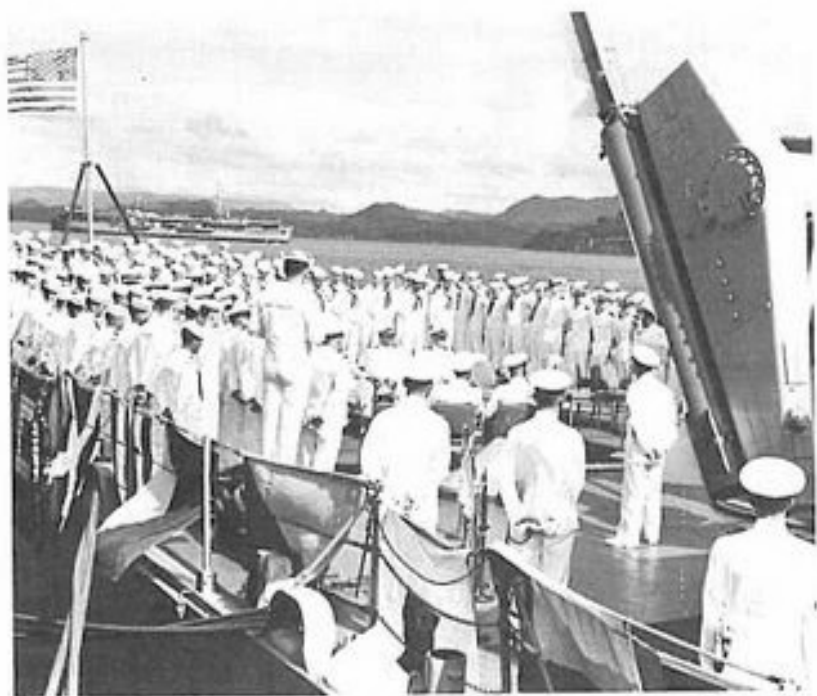


Commodore McMULLEN and guests arrive for the ceremonies.



Captain TESH addresses his crew for the last time.





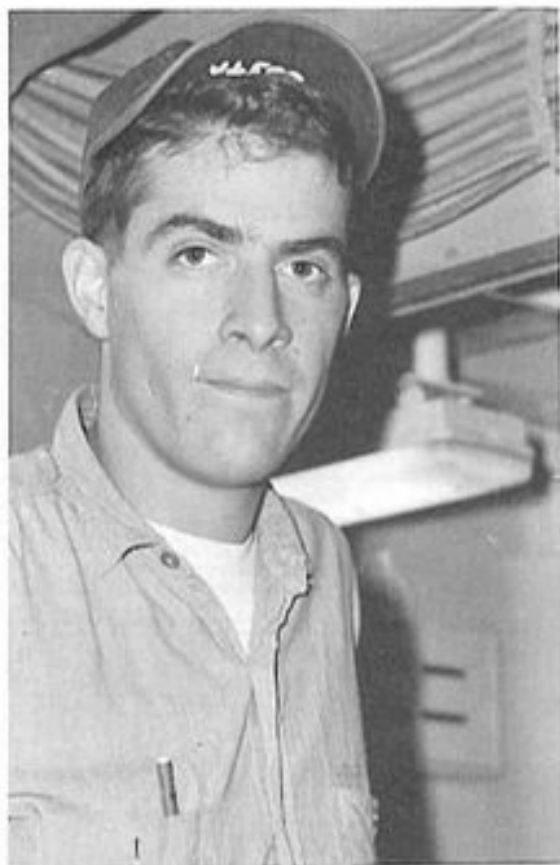
Captain TESH reads his orders. The KING's fifth skipper departed with the personal respect of each crew member as his unrelenting devotion to duty was an example for all.



Captain READ greets his new crew.











Manufactured & Sold by
WALTHAM
Waltham, Mass., U. S. A.

