

1965



GULF
OF
TONKIN



USS KING

DLG-10

W

N

E

S

W
E
S
7
P
A
C

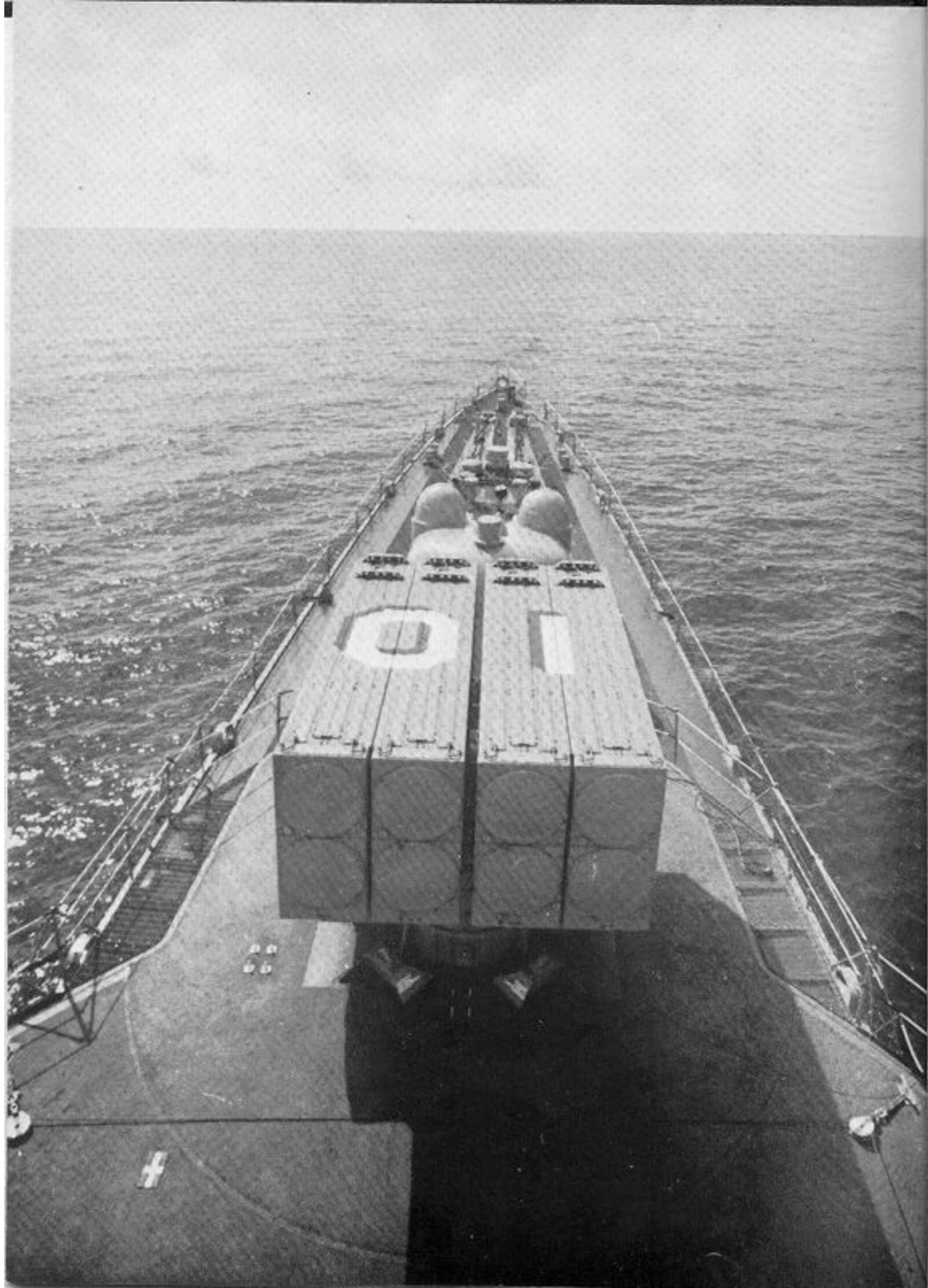
A message from the Captain :


The KING has indeed done well during this long and arduous cruise. She has met every commitment; in other words she has done *what* was required *when* required while remaining at sea more than eighty-five percent of her cruise.

Each of you can feel justly proud of your part in accomplishing our vital task. In future years you can look back on these pages with prideful nostalgia and remember that you were a part of the best crew ever assembled in the United States Navy. You were a KING's man.

To each of you as individual members of a magnificent crew of a magnificent ship, my hearty *WELL DONE!*







KING's keel was laid on 1 March 1957, at the Puget Sound Naval Shipyard, Bremerton, Washington. She was launched on 6 December 1958, and commissioned on 17 December 1960. KING proudly bears the name of Fleet Admiral Ernest J. King, Chief of Naval Operations during the Second World War.

KING is 512 feet long with a beam of 52 feet. Fully loaded she displaces 5800 tons and her modern high pressure steam turbines give her the capability of speeds in excess of 30 knots. KING is manned by a crew of 350 enlisted men and 23 Officers.

This class of ship is new to the Navy, and is designed to function as a fast carrier task force escort and anti-aircraft defense ship, with radar picket and anti-submarine capabilities.

To aid in accomplishing her mission, KING is equipped with the latest weapons systems including Terrier Anti-Air Missiles and ASROC, (Anti-Submarine Rocket), coupled with the Navy Tactical Data System, a computerized display and decision system. Thus endowed she represents a potent addition to the United States Pacific Fleet.



CHARLES P. TESH
Commander
United States Navy

COMMANDING



OFFICER

Commander Tesh, a native of Winston Salem, North Carolina, was educated at the University of North Carolina and was commissioned an Ensign at the Midshipmen School, University of Notre Dame on 9 July 1945.

As a junior officer, Commander Tesh served in communications and gunnery billets in destroyers USS SAMUAL N. MOORE (DD-747) and USS LYMAN K. SWENSON (DD-729) during the period 1949-1952. He continued his sea tour thereafter in USS MANCHESTER (CL-84) as First Lieutenant. In 1954, he was assigned to a three-year tour with the Armed Forces Special Weapons Project (now Defense Atomic Support Agency) at Albuquerque, New Mexico.

Commander Tesh returned to the U. S. Pacific Fleet in 1957 as Executive Officer, USS BRAINE (DD-630), a position he held until assuming command of USS FORSTER (DER-334) in 1959. In 1960 he was ordered to duty on the staff of the Chief of Naval Operations in the Strategic Plans Division. Upon completion of the tour, in 1962, he attended the Army War College, Carlisle Barracks, Pennsylvania.

In July 1963, Commander Tesh reported to USS ORLECK (DD-886) and was Commanding Officer of that Yokosuka, Japan-based destroyer until November 1964 when he was ordered to command of the San Diego-based missile frigate, USS KING (DLG-10).

Commander Tesh is married to Mary Louise Schoenfeldt of Los Angeles and resides with Mrs. Tesh and their four children at 1427-6th Street, Coronado, California.



EXECUTIVE OFFICER



LAWRENCE LAYMAN
Lieutenant Commander
United States Navy



Lieutenant Commander Layman, a native of Laclede County, Missouri, was commissioned in June 1952, at the United States Naval Academy.

His first tour was aboard the USS MARSHALL (DD-676) as First Lieutenant and Damage Control Assistant. In December 1953 Mr. Layman began a tour of duty on the USS CAYUGA COUNTY (LST-529) as Executive Officer.

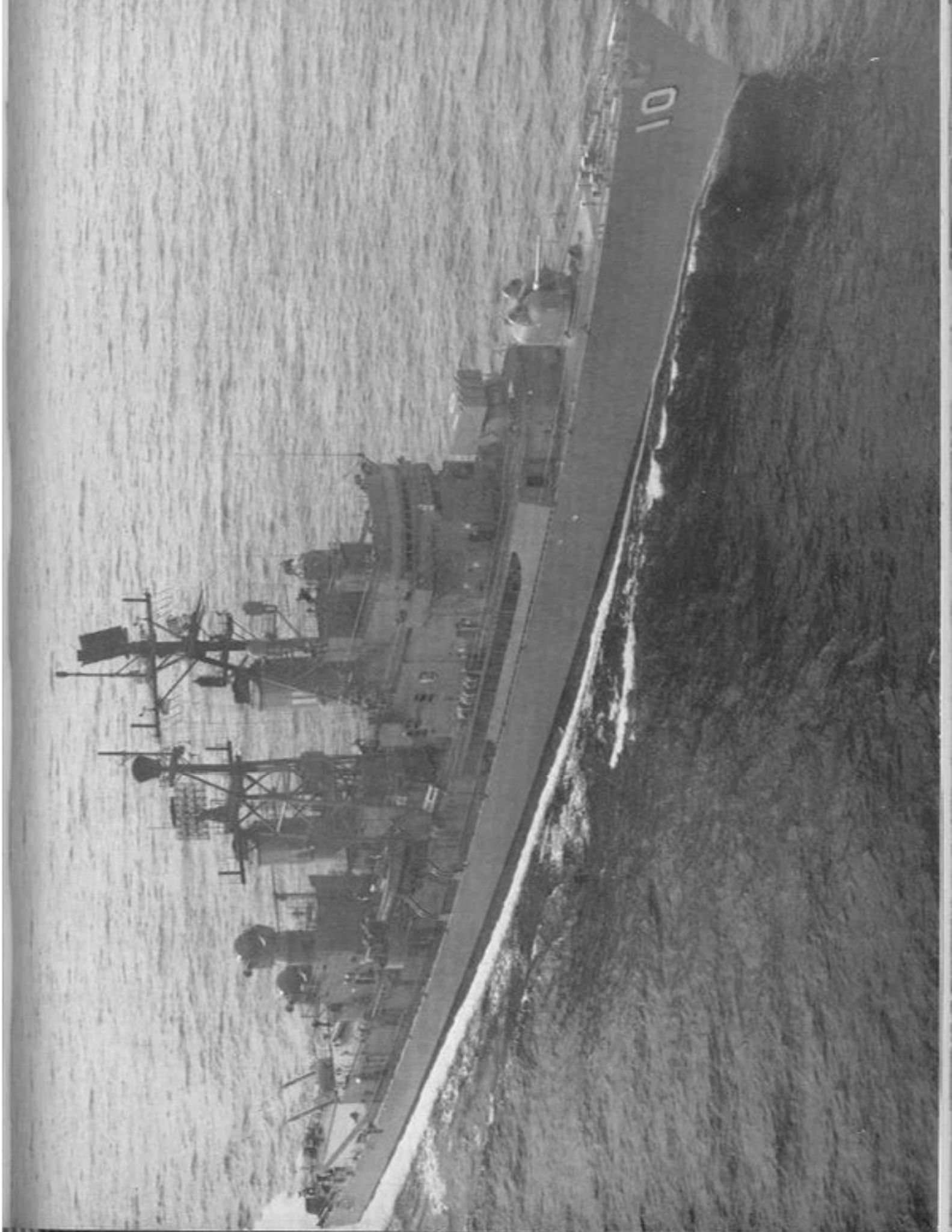
In January 1956 Lieutenant Commander Layman transferred to the Atlantic Fleet Mine Force as Executive Officer of the USS DIRECT (MSO-430), and from there he went to Bureau of Ships as Surface Assistant in the Applied Science Branch for Research and Development in April 1957.

Mr. Layman returned to the Pacific Fleet in April 1959 as Operations Officer aboard the USS SOMERS (DD-947), and after nineteen months began a tour as Communications Officer with the Staff of Commander Cruiser-Destroyer Flotilla Seven.

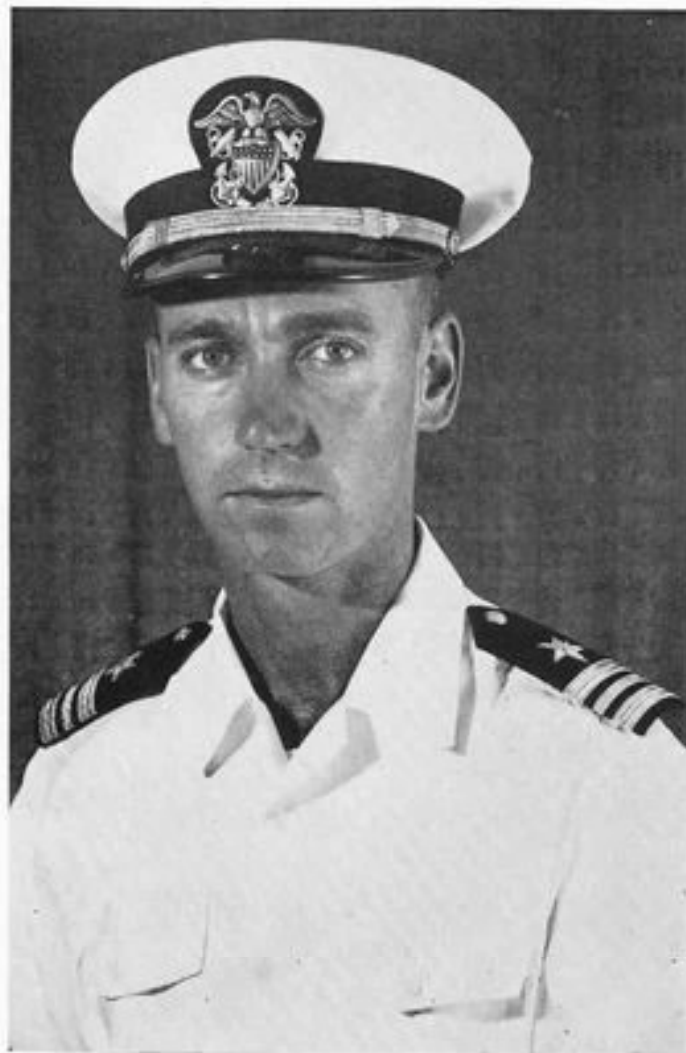
In October 1961 Lieutenant Commander Layman began study on the Navy Tactical Data System and was subsequently assigned to the Fleet Computer Programming Center in San Diego, where he was instrumental in the writing of the Model I NTDS computer program.

In May 1965, the Executive Officer completed the twelve month Nuclear Power Training program and reported aboard KING for duty.

Lieutenant Commander Layman resides with his wife, Carmen, and four children at 4852 Mt. Almagosa Drive, San Diego, California.



WEAPONS DEPARTMENT



LCDR J. R. DENNIS, Jr.
Weapons Officer

"Weaps Boss"



The Weapons Department is responsible for all armament, ordnance, sonar gear, and topside maintenance of the ship. Its four divisions take care of maintaining, handling, stowing, and delivering all ordnance as well as all deck operations.

WF Division



Front Row Left to Right: Palmore, S. R., STM1; Oleson, J. H., FTG3; McGinnis, D. C., FTM2; Monroe, R. J., FTM1; Koski, W. H., GMG2; Relcey, R. H., FTGSN; Durland, P. S., FTG2; Downing, P. H., FTGSN.

Middle Row: Melosh, D. A., FTM3; Gangwich, L. A., FTM2; Santociono, M. D., FTM3; Marcus, R. L., FTGSN; Hughes, S. S., FTGSN; Hunter, L. W., STGSN; Birge, D. M., GMG3; Fields, R. K., STM1; Price, E. C., GMG3.

Back Row: Robieson, D. G., FTM3; Wheeler, F. W., FTM2; Smith, J. W., FTGSN; Saunders, S. S., FTM3; Bois, M. D., FTG3; Brown, J. E., GMG3; Posner, G. L., FTM3; Webb, H. L., GMG2.

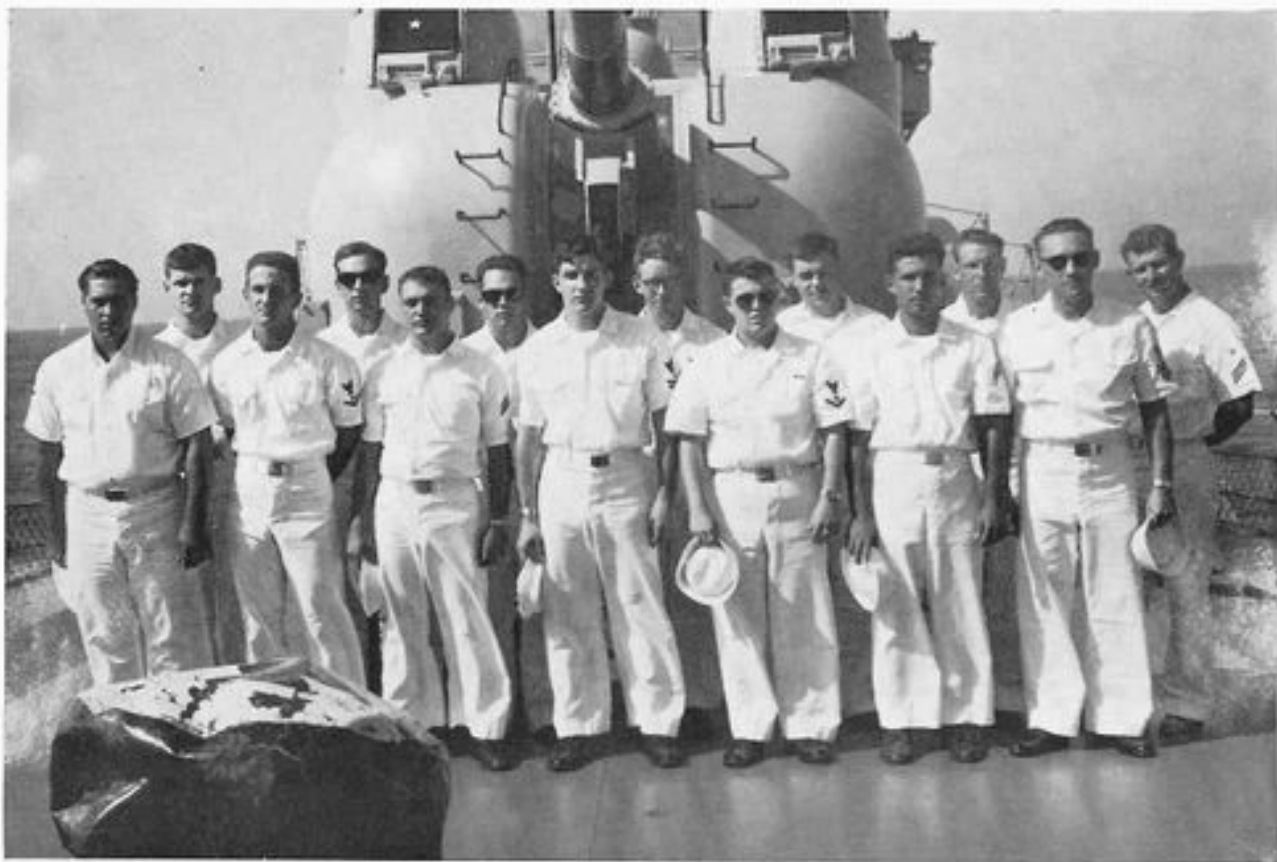
LTJG C. F. BROWN



ENS. D. T. BRADBURY



WF Division



Front Row Left to Right: Rhea, J. L., SN; Smith, D. P., GM3; Hartwell, R. E., SN; Heassler, E. J., FTM2; Taylor, L. E., FTM3; Puccini, B. A.J., SN; Schreffler, W. D., FTM1
Back Row: Strawderman, D. W., FTM2; Richardson, J. A., FTM2; McConnell, A. M., FTM2; Collins, W. S., FTM2; Jackson, C. O., FTM3; Shelton, B. J., SN; Barnett, L. L., FTSN.
Not Shown: Fowler, J. L., FTSN



TOTTEN, J. R., FTMM



CONRAD, F. M., FTG



ROACH, S. C., FTCM



WF Division is charged with the maintenance and operation of all Fire Control Equipment and ship's Armament. This includes Fire Control Radars, Computers, Missile and Gun Directors, and the Gun Batteries.

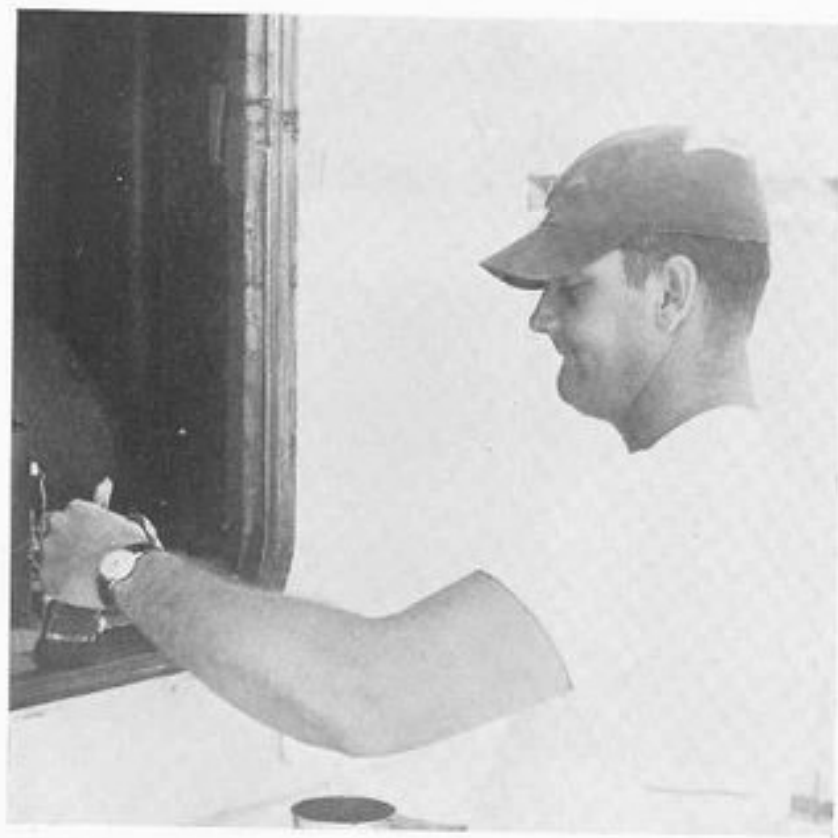
The division consists of two rates. . .



the Firecontrolmen, who take care of both Missile and Gunnery Fire Control Systems. . .



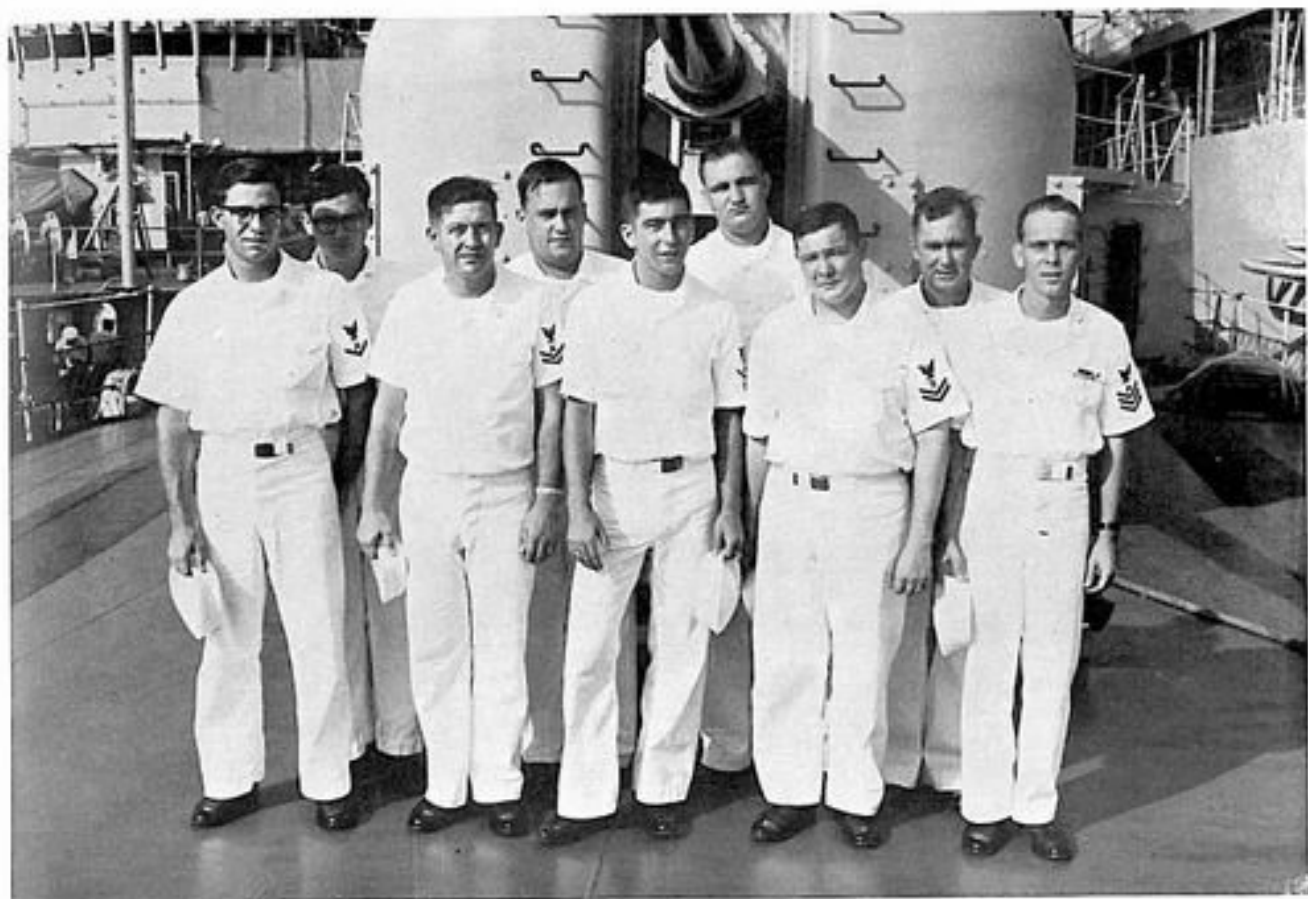
... and the Gunnersmates who work the Gun Mounts, Magazines, and small arms.







WM Division



Front Row Left to Right: Gay, R. A., GMM3; Beshears, G. R., GMM2; Blando, R. J., GMM3; Wilson, J. R., FTM2; Morgan, J. W., GMM1.

Back Row: Anavo, W. J., FTM3; Rieth, R. C., SA; Kennedy, J. N., GMM3; Brogan, C. J., GMM2.

Not Shown: Armstrong, J. R., GMM1.



LT F. D. FOY



ENS. W. R. HAINES
(The "BULL")



FAIRCHILD, J. O., FTC

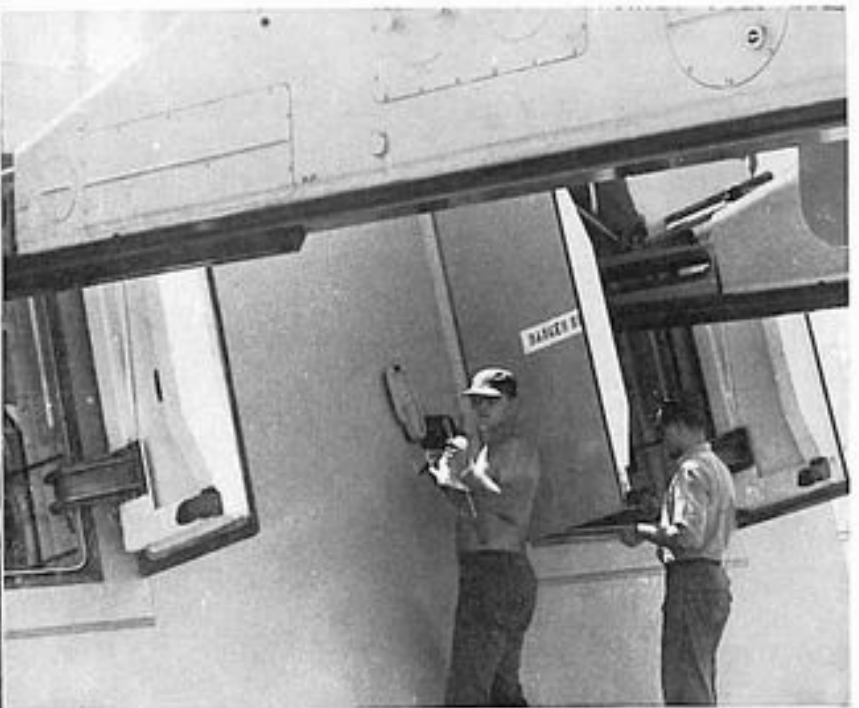
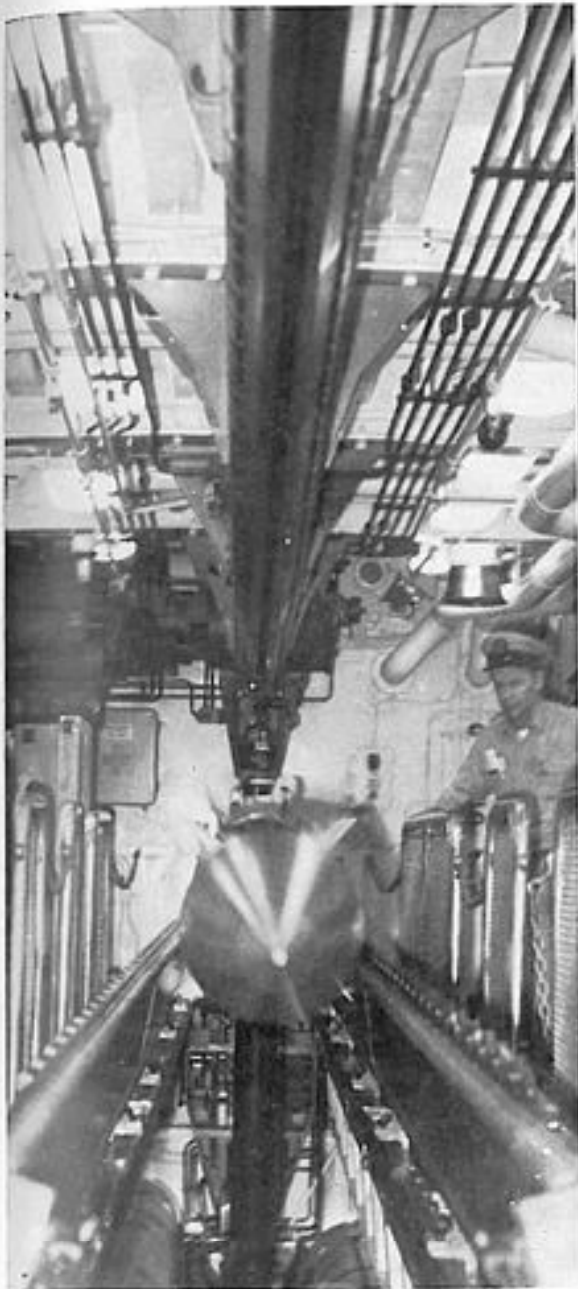


VEASEY, W. F., GMMC

Working behind the closed doors of the Mouse House ...



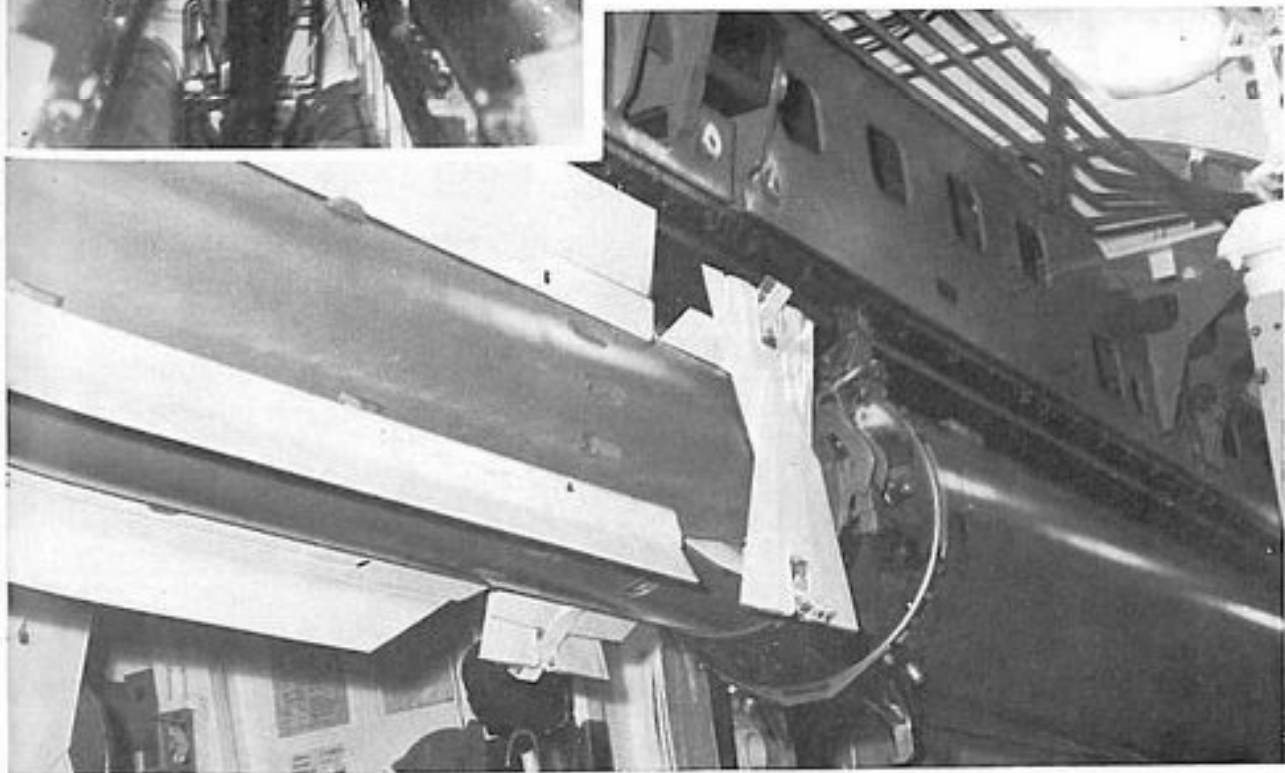
... the men of WM Division ...

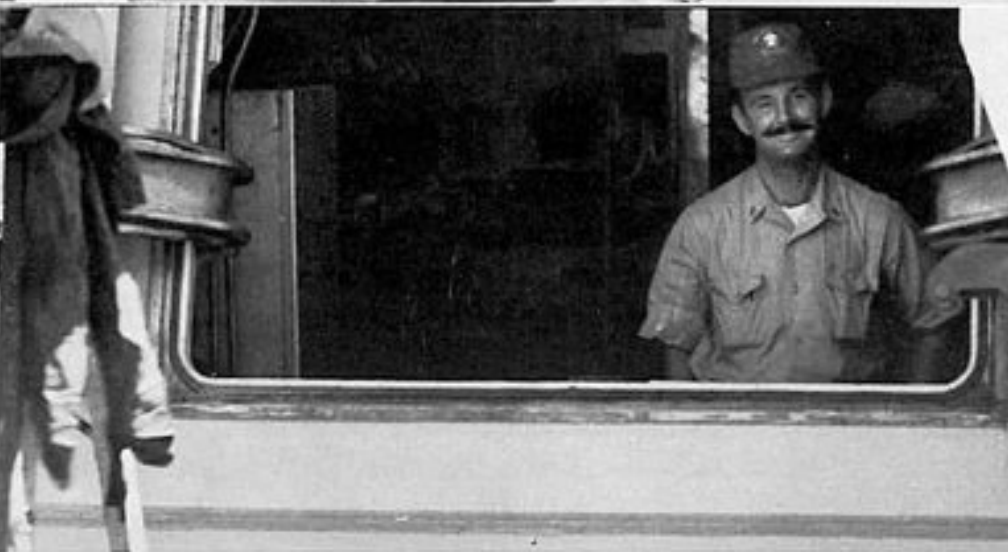


... maintain our missile launching system,

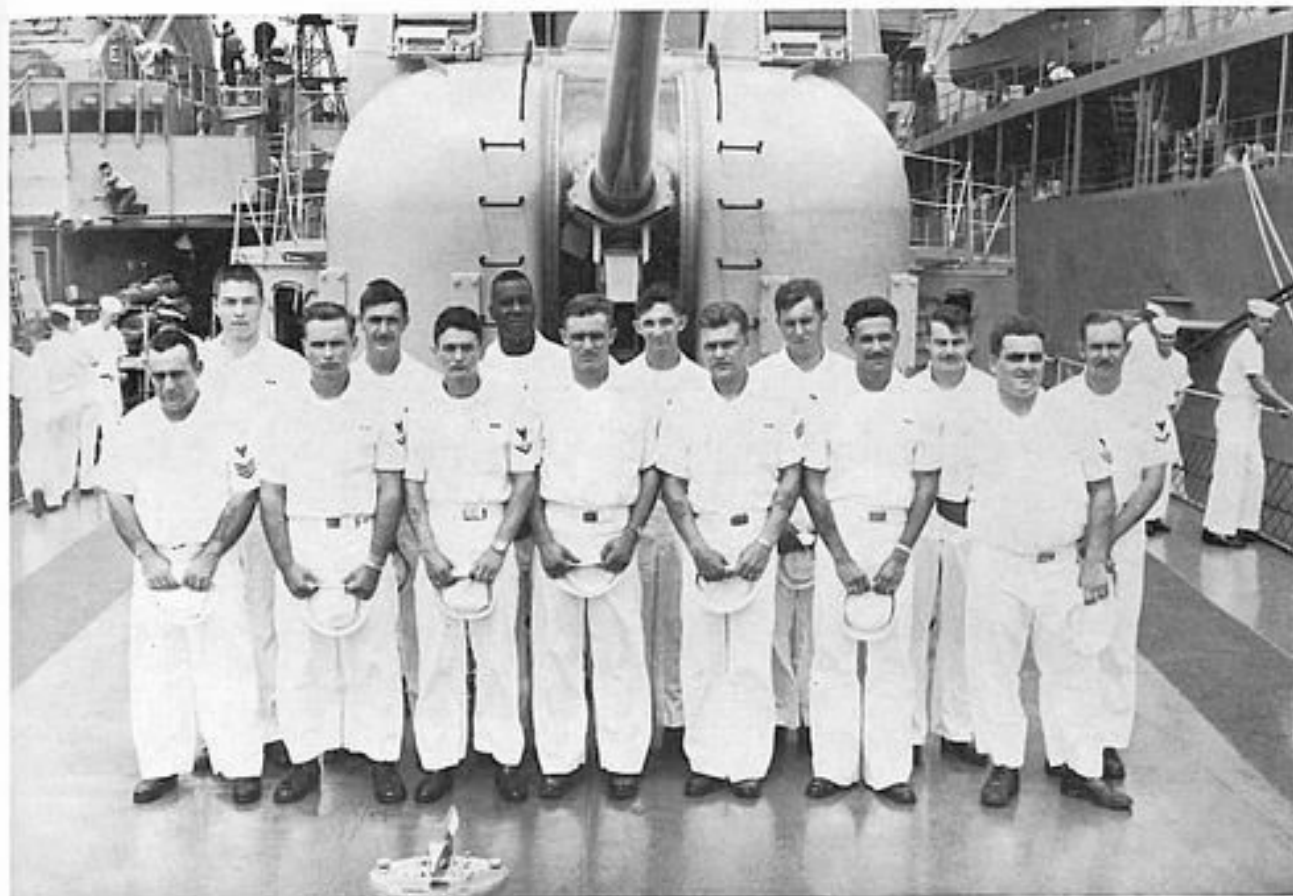


missile test gear, and the missiles themselves.





WA Division



Front Row Left to Right: Henderson, W. C., ST1; Mann, S. H., GMM3; White, W. P., STG3; Engle, R. H., SN; Thieman, L. E., STGSN; Souza, G. W., STGSN; Long, D. E., GMG3.

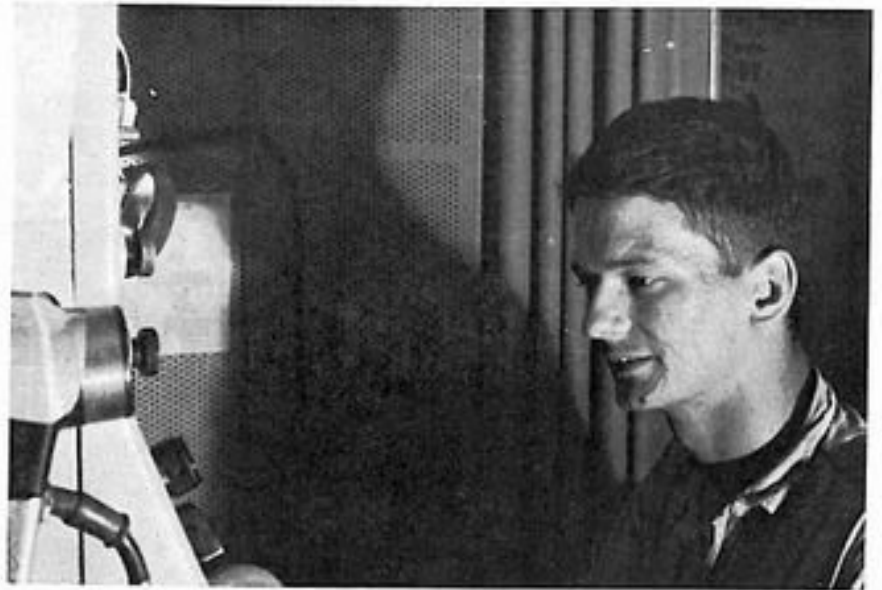
Back Row: Gary M. E., STGSN; Willbanks, J. D., GMM2; Thomas, R., STG2; Martin, R. S., GMM2; Bellman, R. C., STGSA; Grider, W. E., GMM2; Rahn, R. R., STG3.



LT T. H. MEALEY

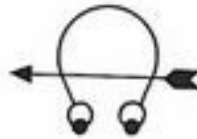


LEHRKE, W. W., STGC

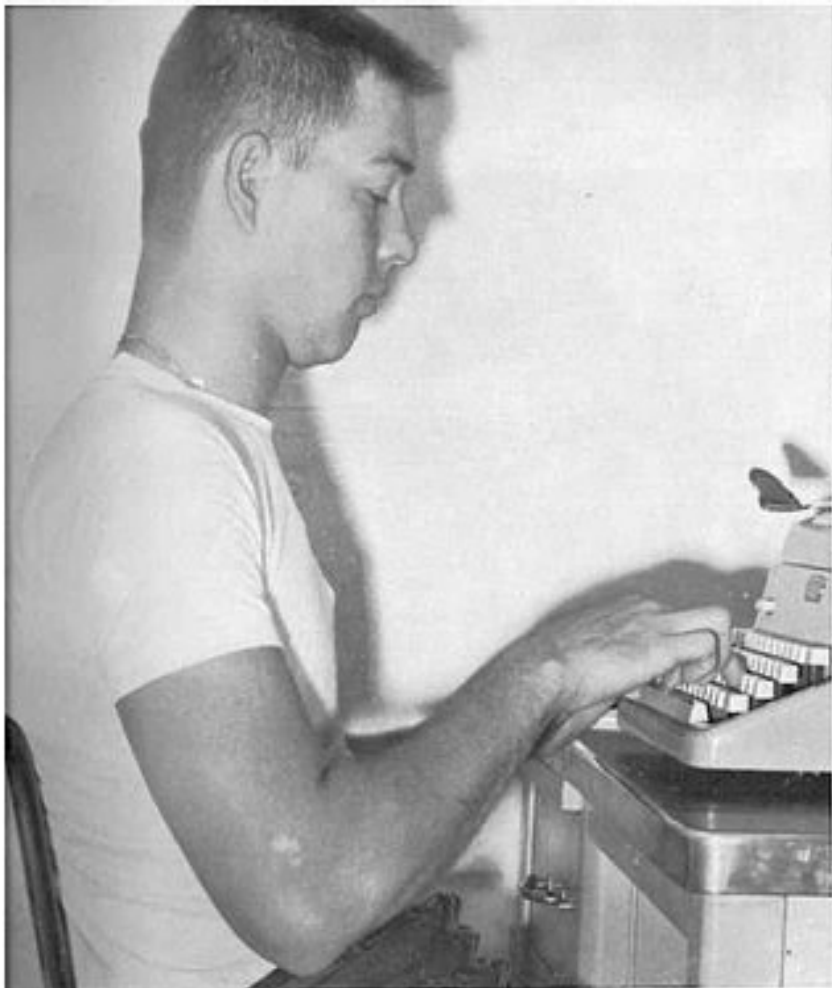


ST GERMAIN, E. J., TMC

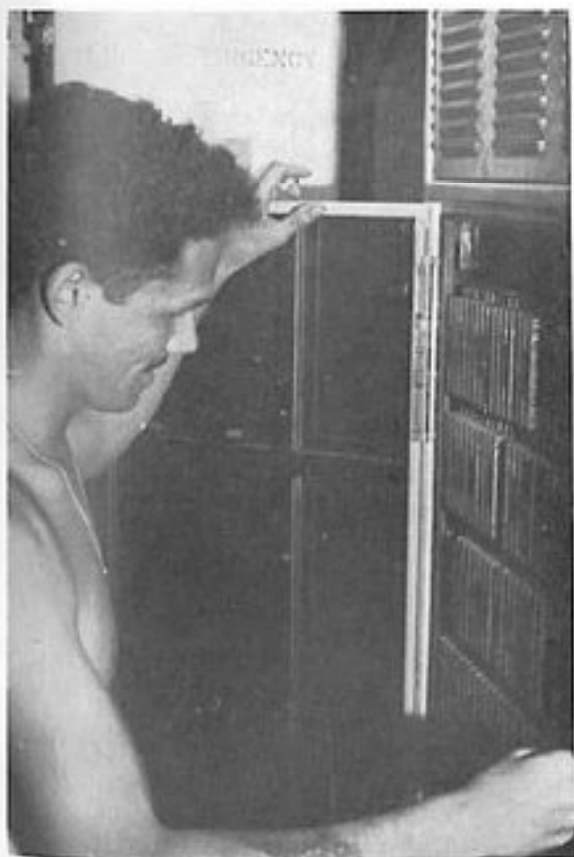
WA Division is responsible for the many facets of Anti-Submarine Warfare.



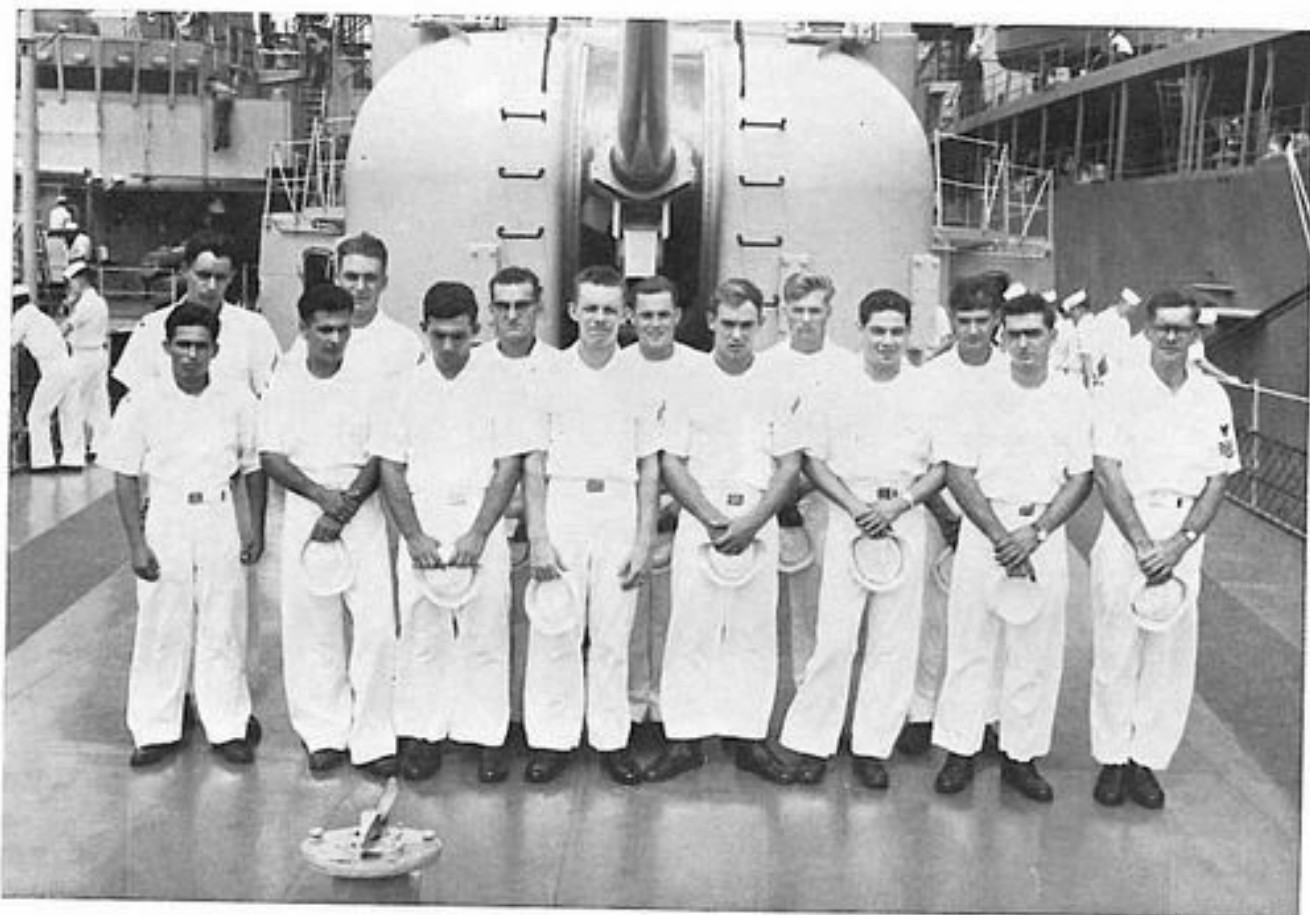
The men of this division operate and maintain the ship's sonar, as well as the ASROC and torpedo launchers.



The Division is made up of three rates; The Sonarmen, ASROC Gunners, and the Torpedomen, who, working together with Operations Department CIC TEAM, make up the Ship's ASW ATTACK TEAM.



WD Division



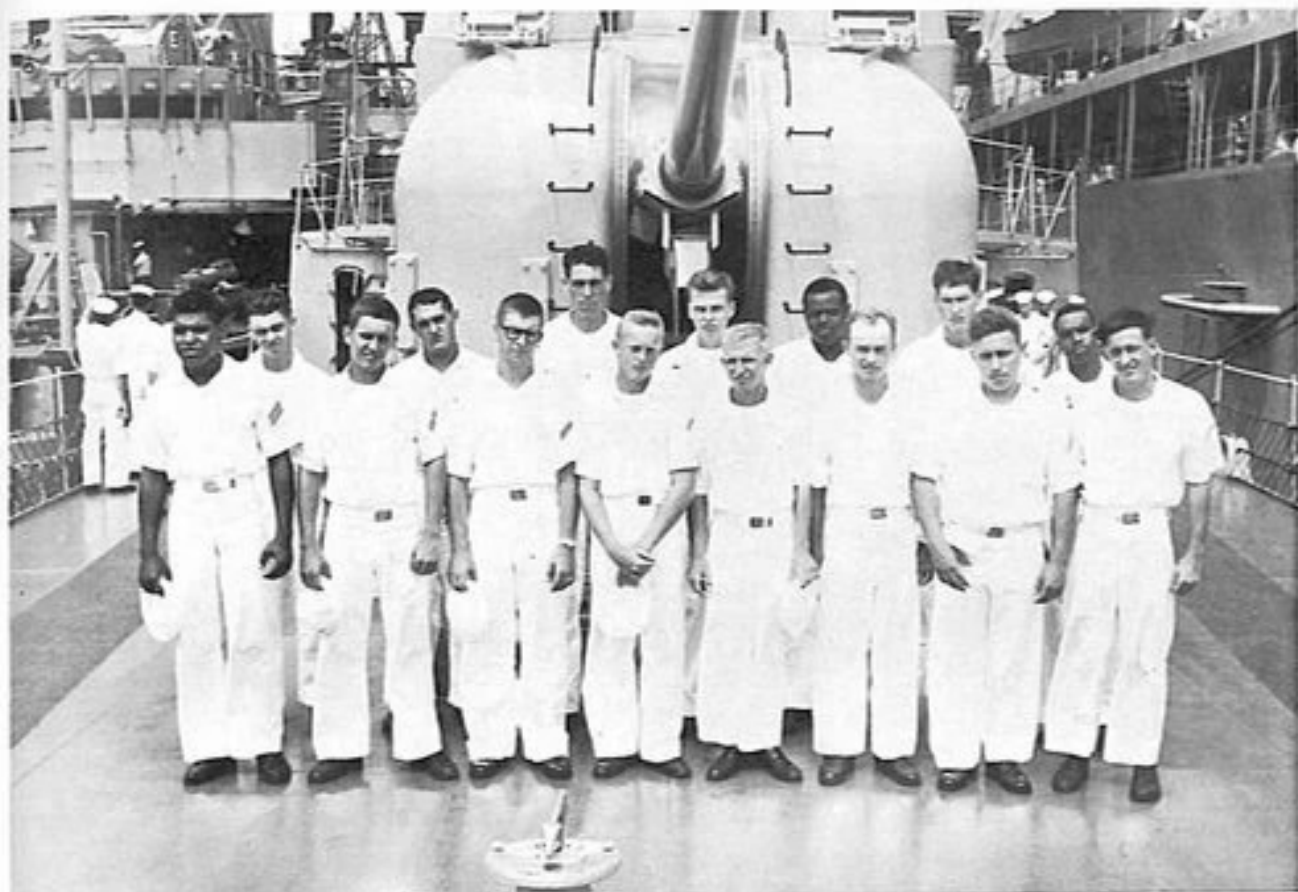
Front Row Left to Right: Barela, A. A., SA; Villa, F. B., SN; Puccini, B. A., SN; Hawley, D. M., SN; Maybricr, G. M., SA; Marin, R., SA; Price, D. D., SA; Haar, E. W., BM1.
Back Row: Dickhart, F. J., SA; Smith, D. R., SN; Millis, G. W., SN; Moffitt, R. W., SN; Stilson, G. S., SA; Frederick, P. E., SA.



LTJG E. R. LA MASTERS



ENS. L. W. CHASSELS



Front Row Left to Right: Brooks, T. F., SA; Ditton, G. L., SA; Jones, J. L., SA; George, J. R., SA; Tedder, J. D., SN; Ward, J. L., SN; David, D. J., SN; Methvin, J. L., SA.

Back Row: Mullins, R. F., SN; Vashon, W. L., SN; Barton, L. D., SN; Kessler, R. C., SN; Brown, W. L., SN; Miller, W. B., SN; Haith, W. A., SN.



HILLIER, J. J., BMC



Even in our modern Navy with electronics
and computers. . .



Front Row Left to Right: Mayhew, E. A., SA; Riley, T. G., SN; Brown, J. E., SA; Cole, J. S., SN
Back Row: Dudley, W. M., BM3; Haney, L. L., BM2; Bell, E., SN; Morey, W. L., SN; O'Commer, J. F., SN.



... we have found no substitute for manpower. Decks still need to be swabbed, bulkheads chipped, and lines handled.

This is the job of the deck force of WD Division.



It is charged with the execution of all deck seamanship evolutions and supplies men for . . .



. . . bridge watches, lookouts, and almost all details set at sea or in port.

SUPPLY DEPARTMENT



LT R. A. DROPP
Supply Officer

"Head Pork Chop"



Service to the KING of the Fleet is the motto of the Supply Department. Although Supply is one of the smallest departments of the KING it has a great variety of jobs to be accomplished. The department is basically responsible for management of financial, purchasing, accounting and business affairs of the ship.

SS Division



Front Row Left to Right: Elayda, J. A., SD2; Gubantes, M. S., TN; Lucero, R. A., TN; Jackson, R. P., SN; Winfrey, J., SN; Navasca, A. L., SK2; Justice, H., SH3.

Back Row: Broadus, R., SHSN; Mahoney, J., SK3; Ried, S. L., SK1; Holcomb, C. J., SKSN; Desingano, D., SK3; Murdock, T. L., SN; Blair, R. E., DK1.

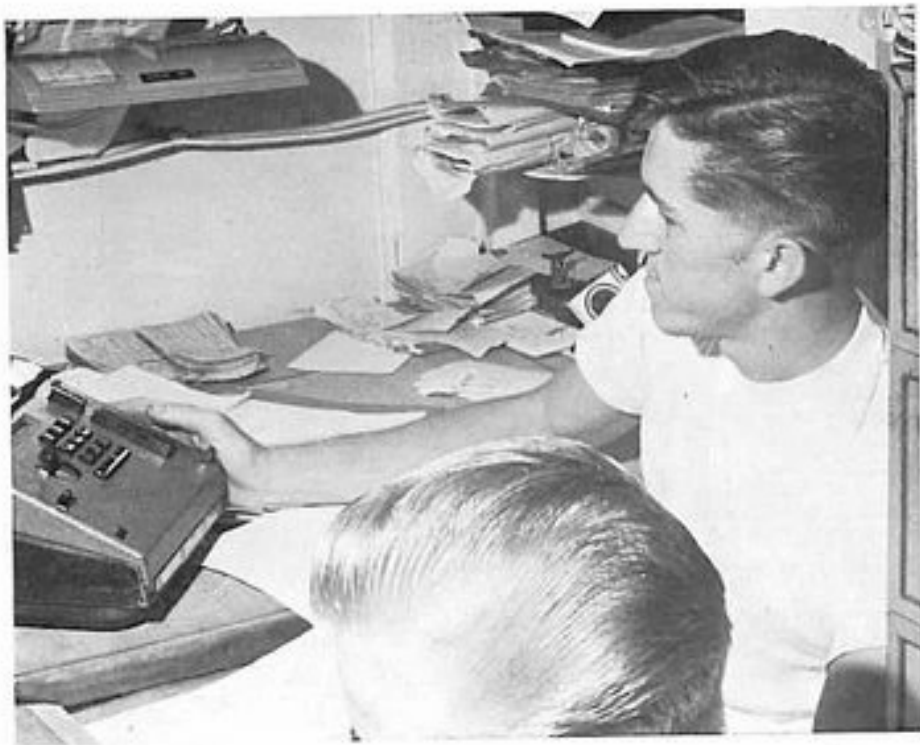
Not Shown: Rogers, T. B., SN; Vacec, H. T., SHSN; Trinidad, J. A., SK2; Wagnon, C. S., SKSN; Reyes, F. S., SK3; Lopez, F. P., TN; Castillo, R. M., SK3; Escobar, J. E., TN; Richardson, S. O., SKSN.



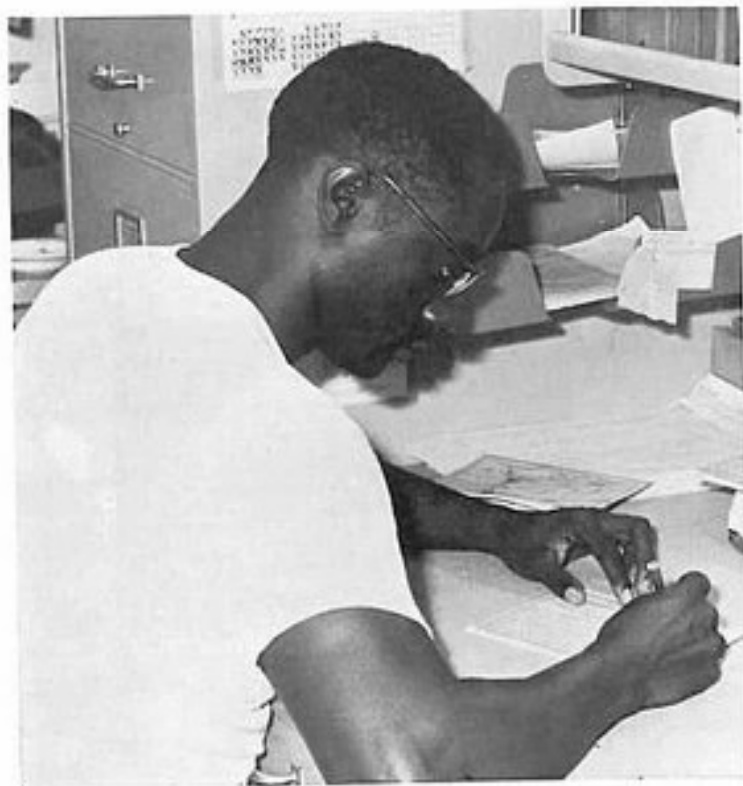
LTJG J. A. RZASA



SCHULTZ, R. R., SKCS



The Storekeepers who work in GSK order, stock, issue, and control all repair parts and consumables used by other departments.



It is their job to see that each of the 60,000 line items stocked in 20 storerooms is available whenever it is required.

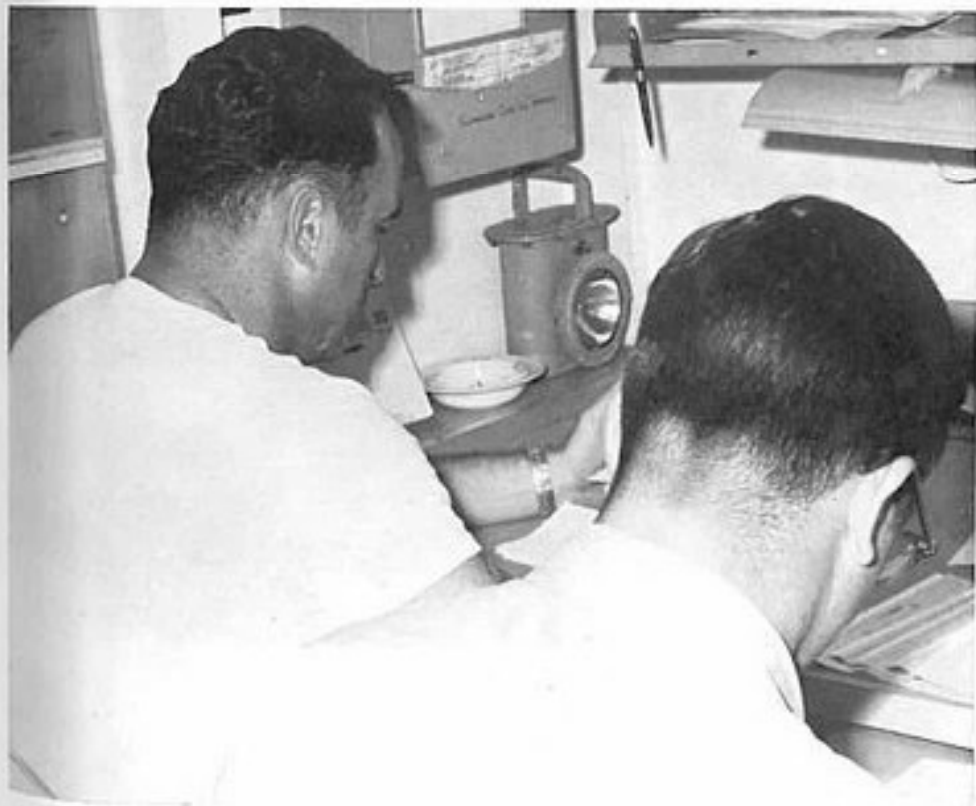




The Disbursing Clerk, probably one of the most popular men on the ship. . .



. . . helps spread American goodwill around the Far East with his twice monthly paydays which average \$27,000.00.



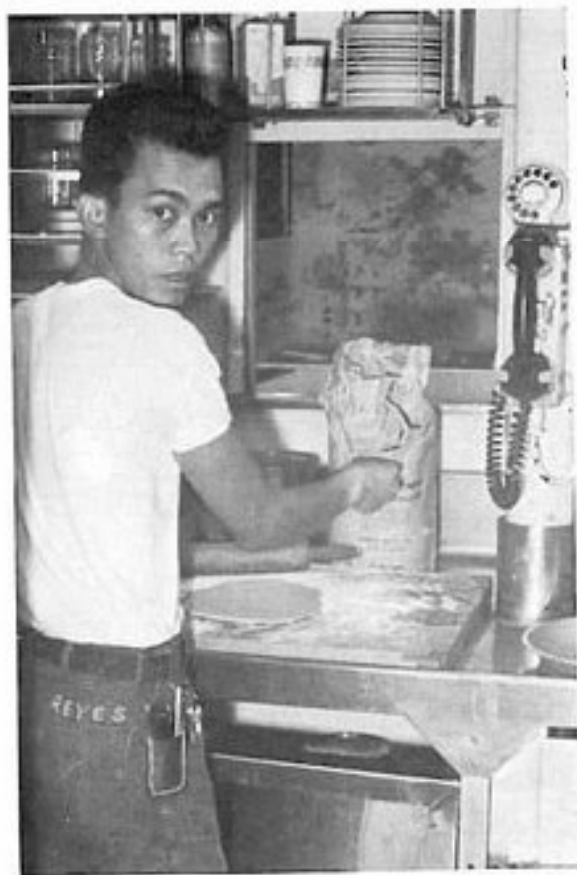
As a result KING is heavily laden with Tape Recorders, China, and souvenirs purchased in various ports.



The Stewards can be given credit for operating and maintaining one of the finest wardrooms afloat.



JERKINS, S., SDC

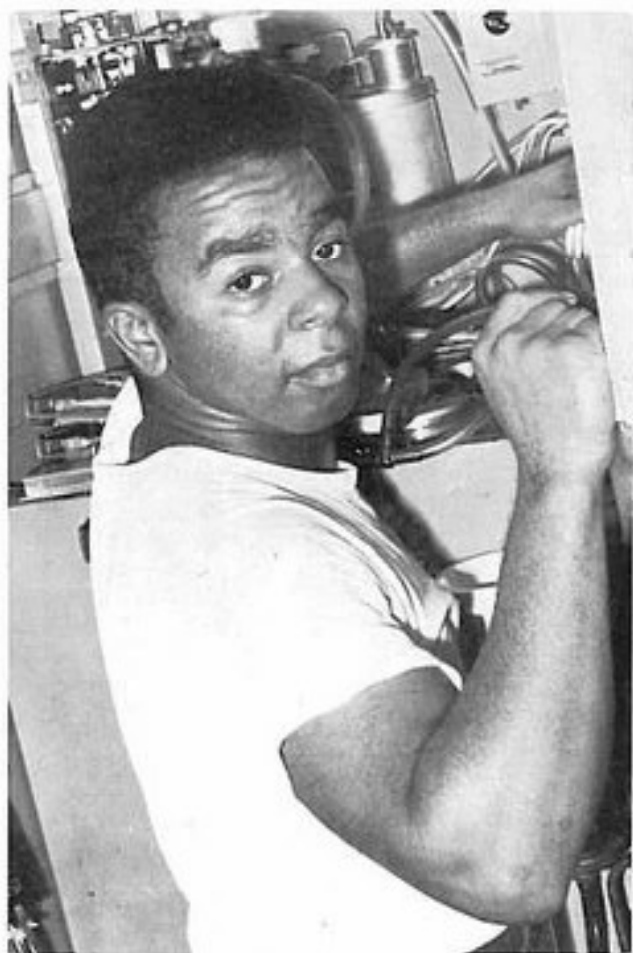




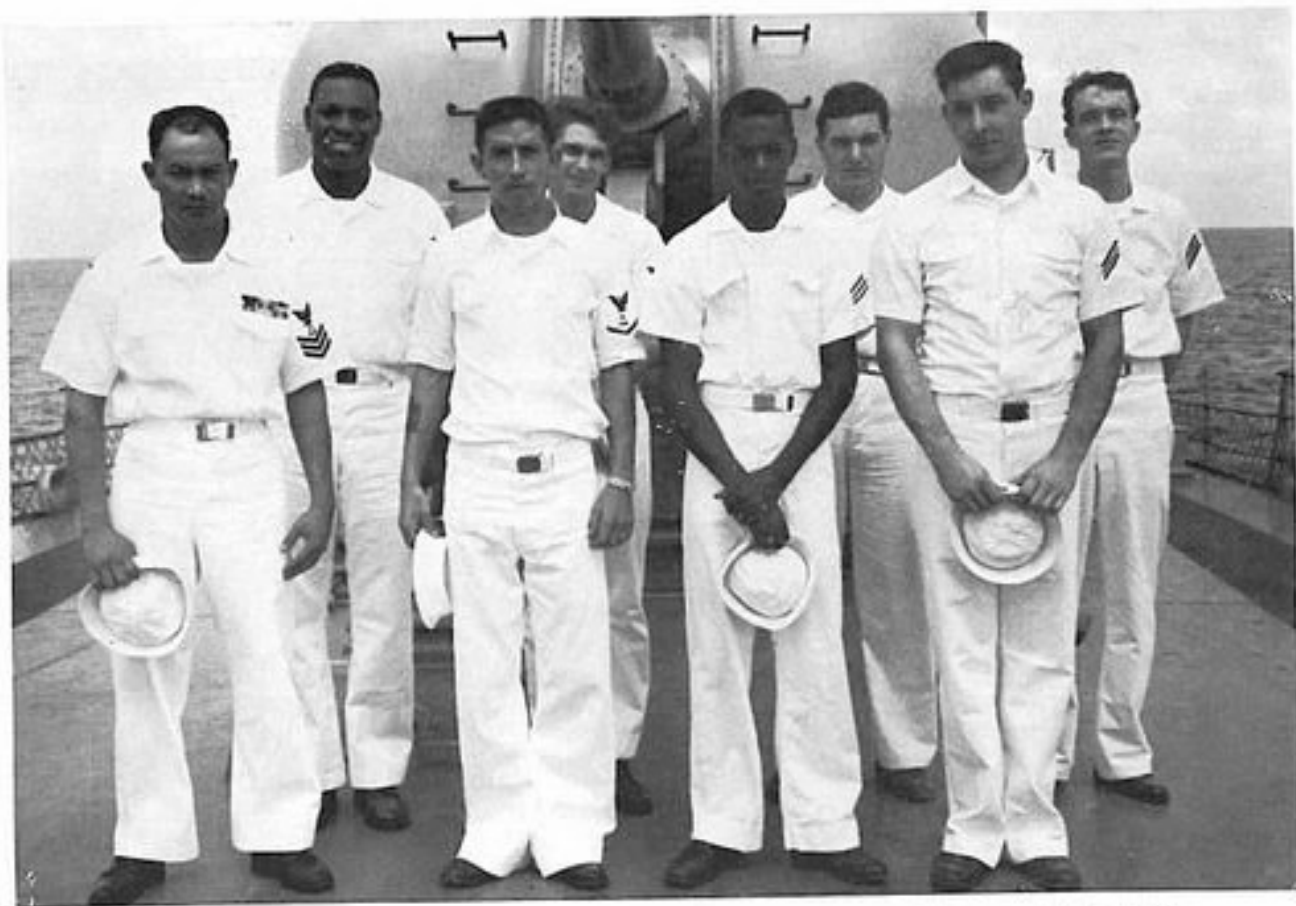
The Ship's Servicemen see that everyone in the crew is well groomed and well dressed.



They operate the Laundry, Barber shop, Ship's Store and Vending Machines.



SC Division



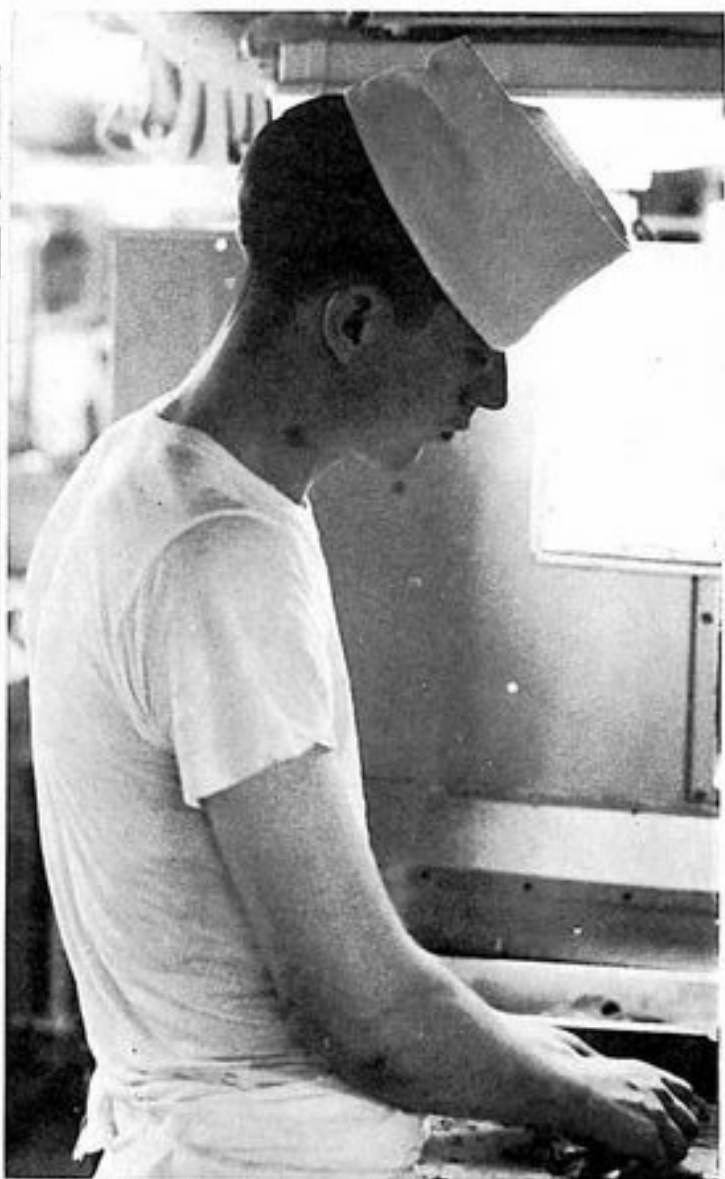
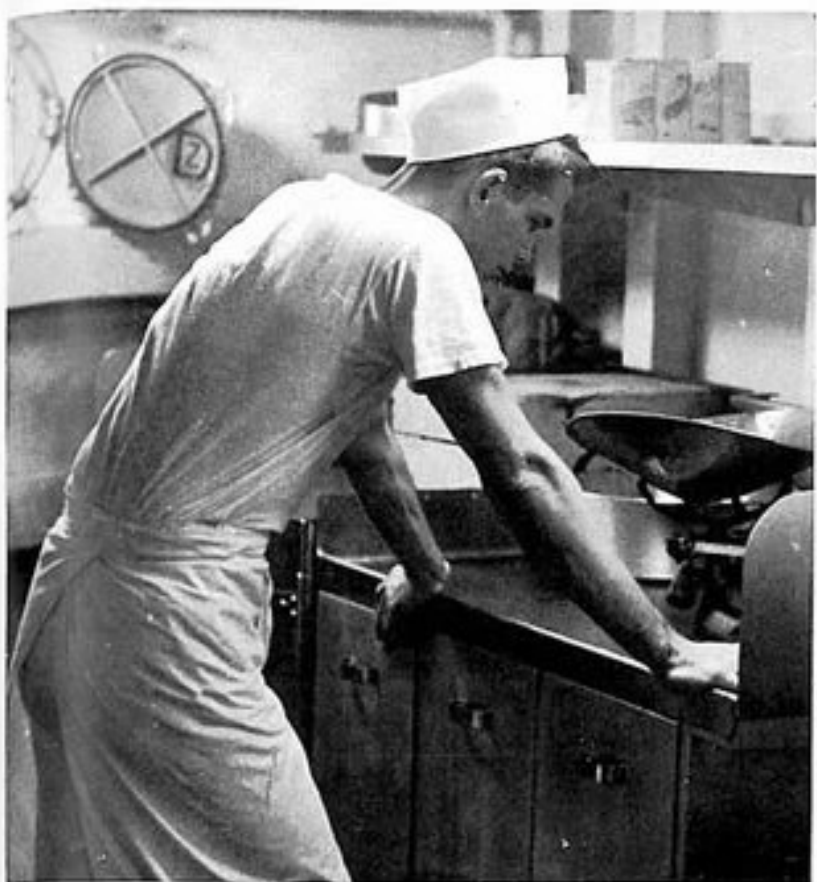
Front Row Left to Right: Carlos, R. L., CS1; Montanez, T. A., CS3; Barksdale, E., CSSN; Farrar, Z. M., SSSN.
Back Row: Harvey, J. B., CS2; Smith, S. L., CS3; Paone, A. D., CSSN, Mulligan, R. E., CSSN



LTJG J. A. RZASA



CLERICO, S. J., CSC



Our Commissary men have the task of preparing three meals per day for 350 men. . .





... and do such an excellent job that many of the crew say, "Just like mother used to make."



OPERATIONS DEPARTMENT



LT. L. E. WOOD, Jr.
Operations Officer

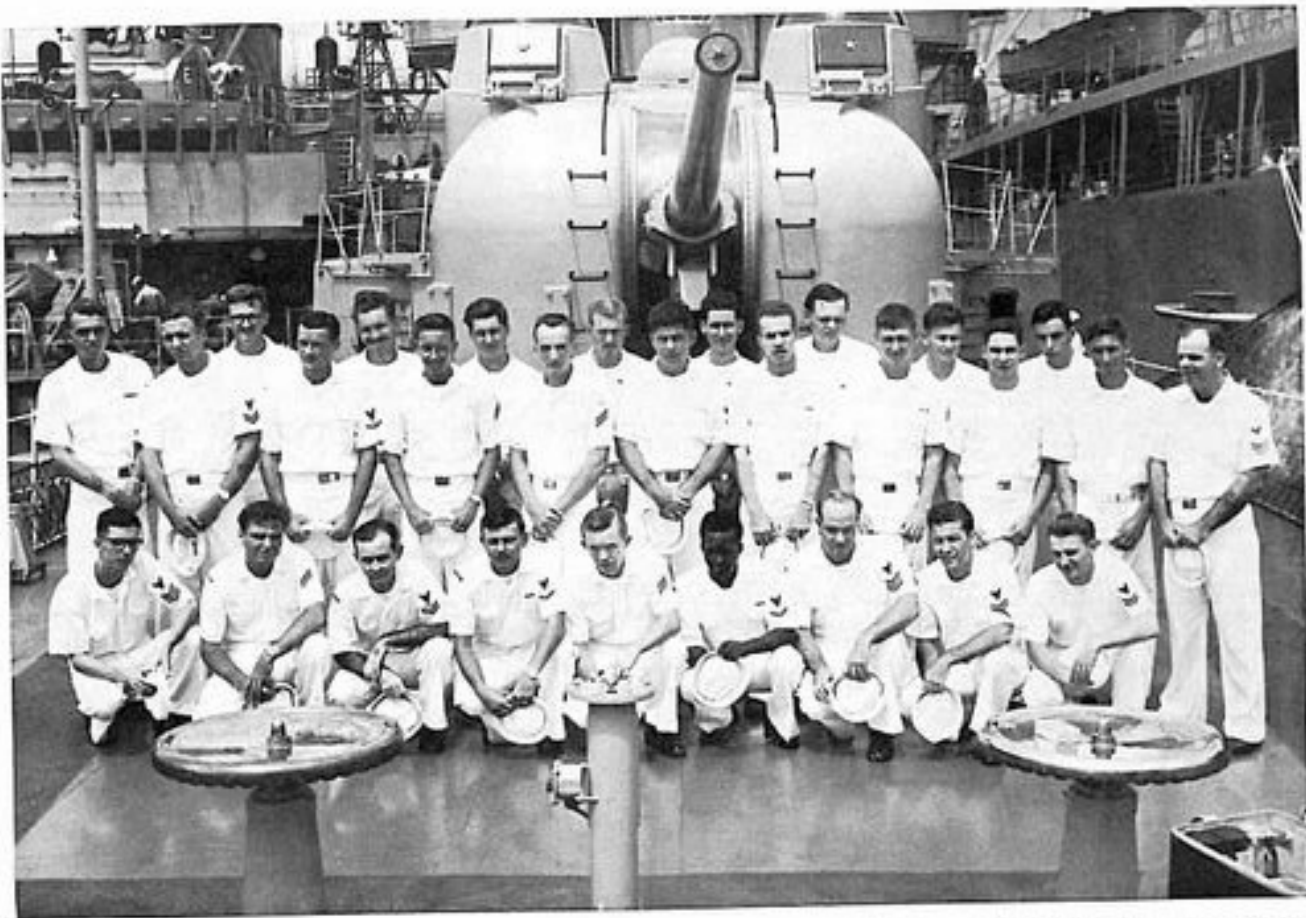
The Operation Department is charged with the responsibility of providing all tactical and operational information, as well as the planning, scheduling, and coordination necessary to insure the efficient operational readiness of the ship.

The following divisions are organized under the Operations Department: OI, NTDS, OE, AND OC. . .



"Ops Boss"

OI Division



Front Row Left to Right: Jumper, G. T., RD1; Robbins, B. E., RDSN; Smith, E. M., RD2; Tapster, T. D., RD3; Fisher, J. D., RDSN; Hardy, E., RD3; Stevens, J. L., RD1; Roberts, J. A., RD2; Wilson, V. A., RD2.

Middle Row: Short, W. W., RD1; Havlik, E. J., RD2; Jones, W. E., RD3; McGlaun, B. C., RDSN; Clark, L. G., RDSN; Raum, R. G., RD3; Barnes, R. A., RDSN; Shafer, G. D., RDSN; Sammut, H. J., RD3; Fitzpatrick, T. X., RDSN; Hargrove, T. W., RD1.

Back Row: Davis, J. M., RD3; Judson, D. L., RDSN; Payne, J. R., RDSN; Finley, J. E., RDSN; Suttles, J. J., RD2; Gisehler, D. L., RD3; Newcomb, J. E., RD2; Koppang, T. A., RD2.

Not Shown: Bone, T. L., RD2; Jester, H. R., RD3; Davis, G. L., RDSN; Weisgerber, C. K., RDSN; Crook, J. P., RDSN; Swintosky, S. M., RDSN.



LT. L. A. CANGIANELLI



ENS. J. A. FULMER



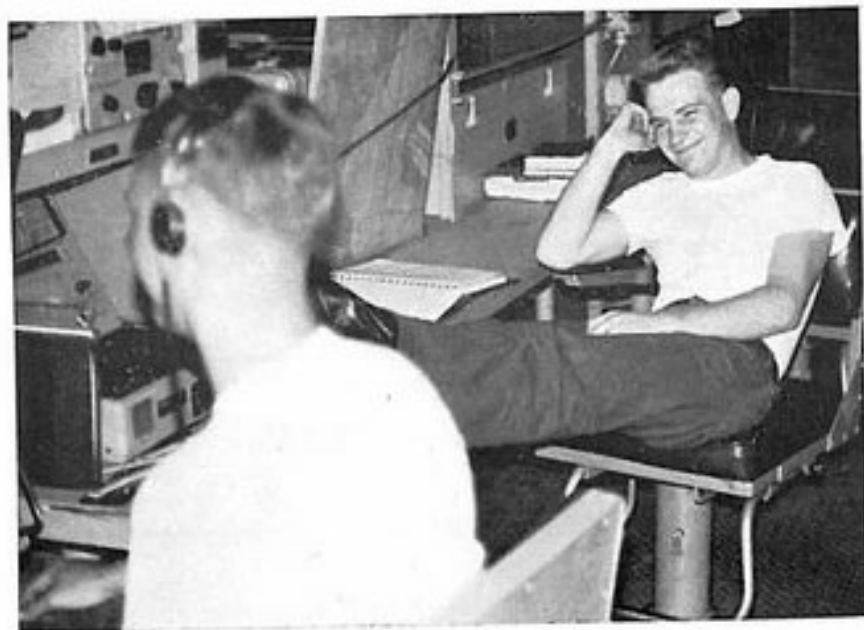
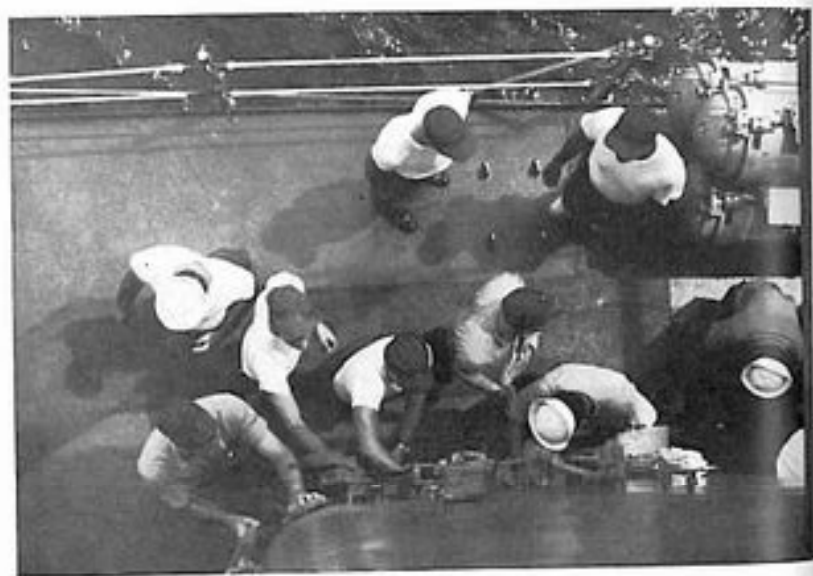
ENS. H. W. ROADS



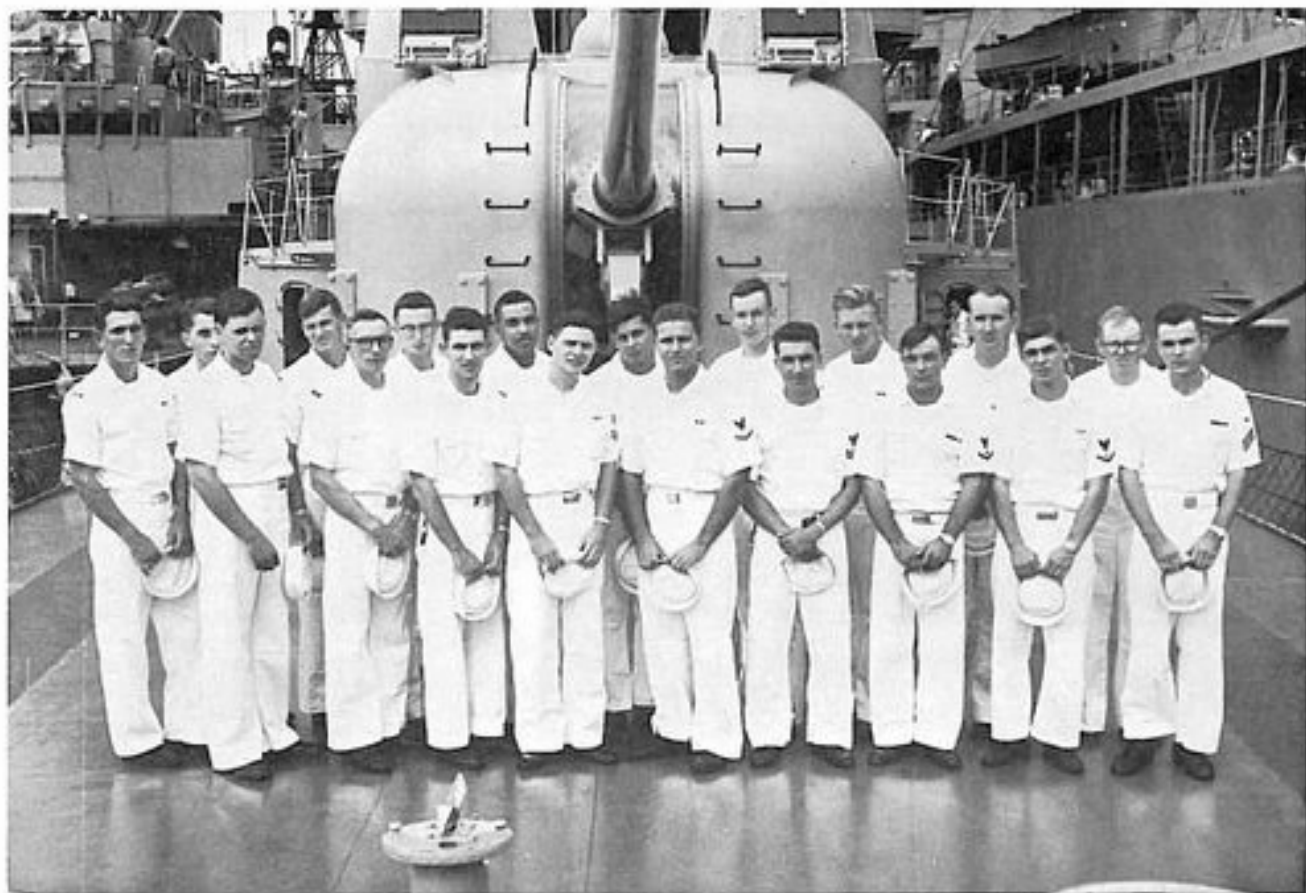
OI Division controls the combat information center where the tactical information necessary for safe navigation, fire control, and air and surface plotting is displayed, evaluated and disseminated. Radar consoles manned by radarmen are used to track ships and aircraft in the vicinity.



STIENBRUNN, W. M., RDC



NTDS Division



Front Row Left to Right: Stanley, R. J., DS3; LaBelle, R. E., DS1; Wilson, A. R., DS3; Herrick, F. S., DS2; Niedermeier, G. R., DS2; Sluck, R. L., DS3; Nickels, J. D., DS2; Weaver, R. L., DS3; Anderson, J. L., DS3; Jones, J. D., DSSN;

Back Row: Breen, M. T., DS3; Russell, R. C., DS2; Hery, T. A., DS3; Huntley, J., DS2; Simon, G. T., DS2; Lochr, D. J., DS3; Peterson, W. E., DS3; Taylor, G. T., DS2; Clinton, DS1.

Not Shown: Dubois, L. E., DS2; Branblett, C. T., DS3.



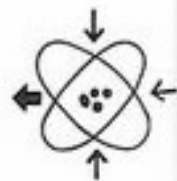
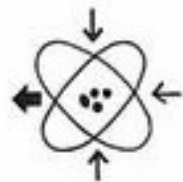
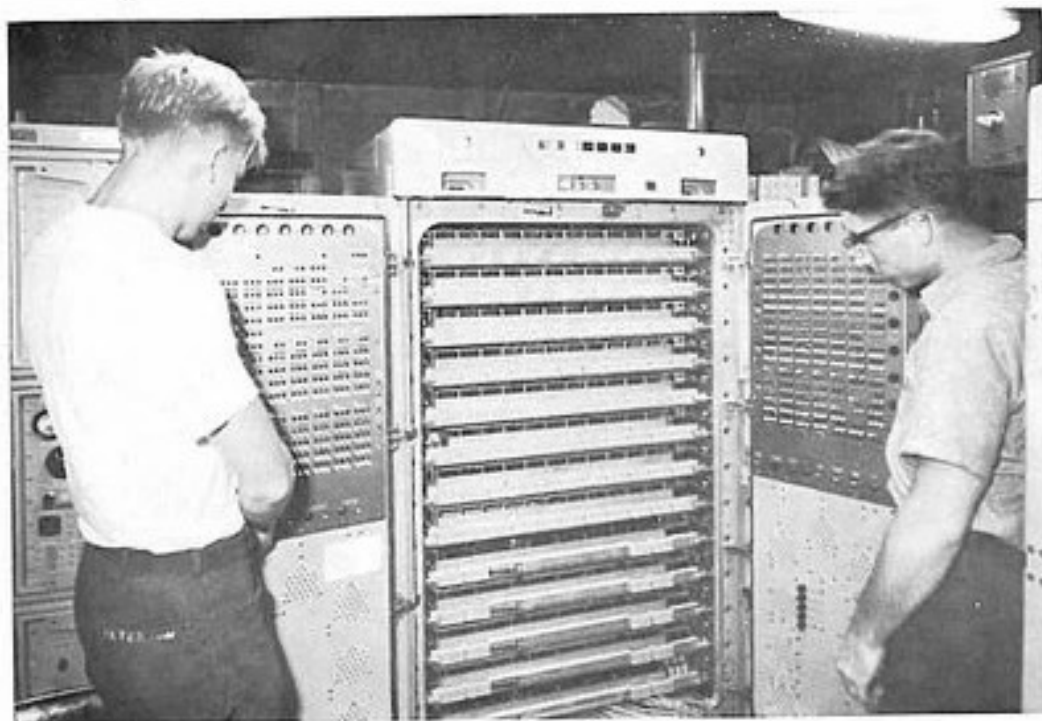
LT. L. WORLEY



JACOBS, J. D., DSC



Within the last few years a new rate has materialized under the heading of electronics. It is called Data System Technician. These men, more commonly called DS's, work primarily with the new Naval Electronic Equipment known as NTDS—Navy Tactical Data System.

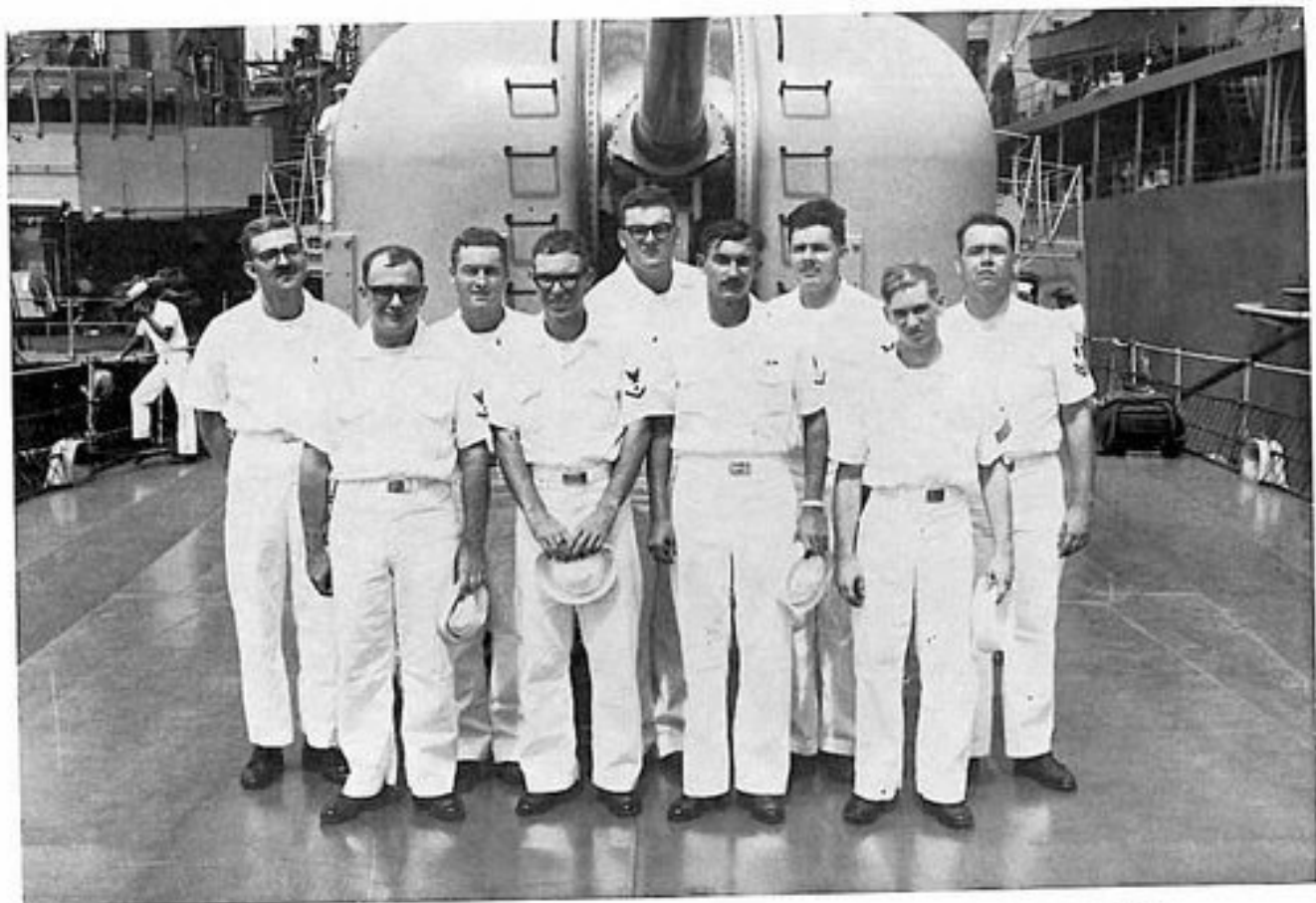




Within their field of electronics the DS's have many tasks to perform, equipment to maintain, log's to keep, and of course their working spaces have to be kept up to par also.



OE Division



Front Row Left to Right: Duffy, L. J., ETN3; Russell, E. B., ETR3; Debruler, M. R., ETN3; Eder, B. N., ETNSN.
Back Row: Tabler, L. E., ETR3; Casey, M. J., ETNSN; Doornbos, K. L., ETR3; Dichnel, J. W., ETR3; Heffey, G. G., ETR2.
Not Shown: Cassavant, R. L., ETRSN.



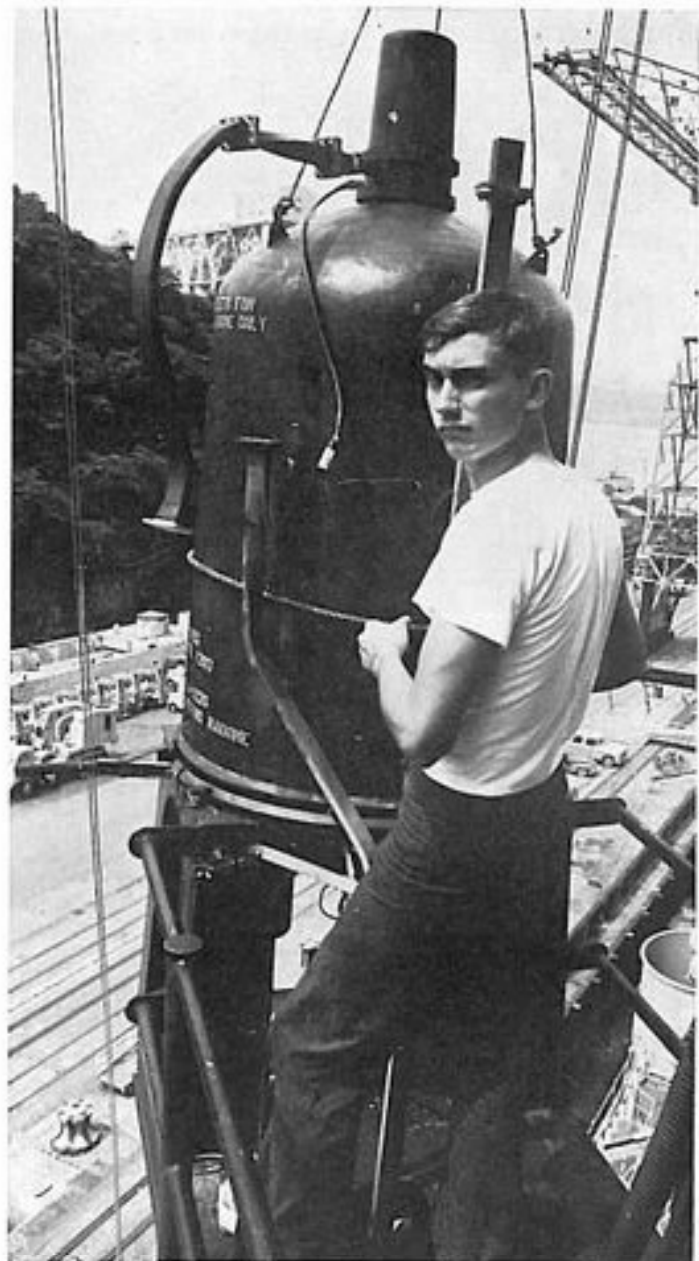
ENS. L. M. HOLLOWAY



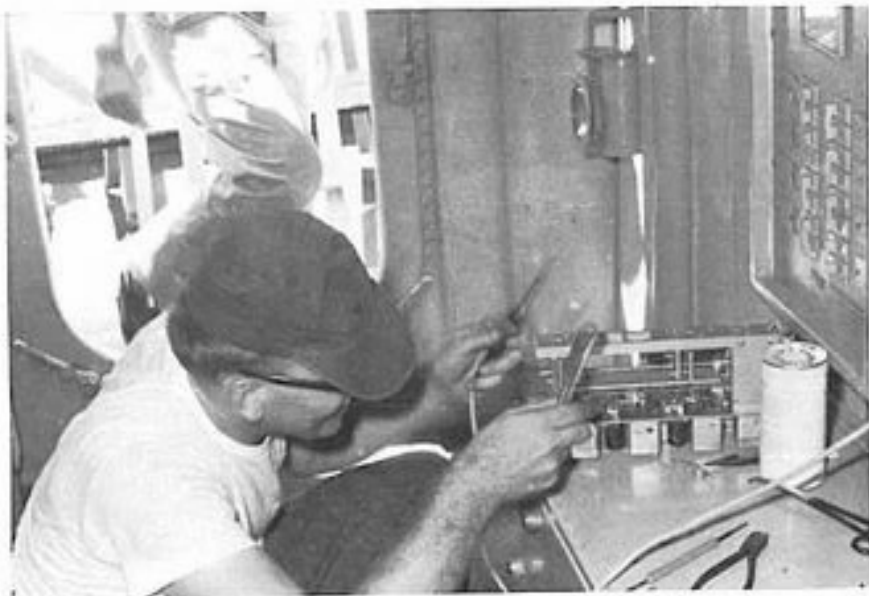
McLAUGHLIN, J. F., ETC



In order to have communications, our equipment must be in top working condition and remain so. If our equipment is suddenly rendered inoperable. . .



... due to a blown tube or burned out resistor, the electronic technicians of OE Division are called into action.



"Before you do anything get out your instruction book!"

OC Division



Front Row Left to Right: Hoover, R. M., RMSN; Fontanilla, J. S., RMSN; Biggs, R. L., RM3; Long, G. F., SM3; Diecks, R. D., SMSN; Leach, W. D., SM2; Cook, H. A., RM2; Harnisfefer, C. J., RM1.

Back Row: Leach, D. E., RM2; Gayer, E., SMSN; Thompson, W. D., RM2; Ranz, C. D., RMSN; Hughes, D. M., RMSN; Hucksoll, RM3; Jacobs, K. L., SM2; Tubbsing, K. L., RMSN.



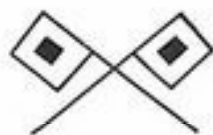
LTJG E. H. McDAVITT



ENS. H. L. TURNER



OC Division is composed of two rates; The radiomen are concerned with all messages sent and received via . . .



PHILLIPS, G. M., SMCS



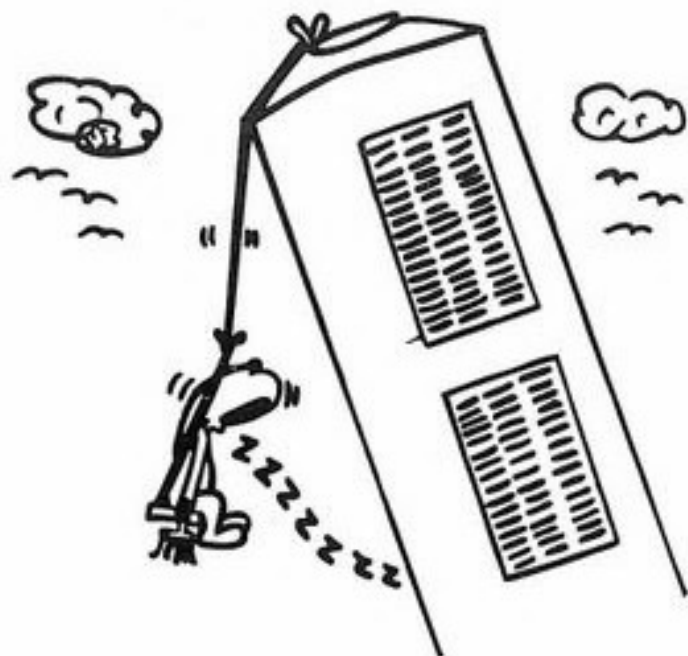
CARTER, F., RMC



radioteletype, radiotelephone and radiotelegraph. Communication is vital to our operation and may include anything from a birth announcement to a battle order.



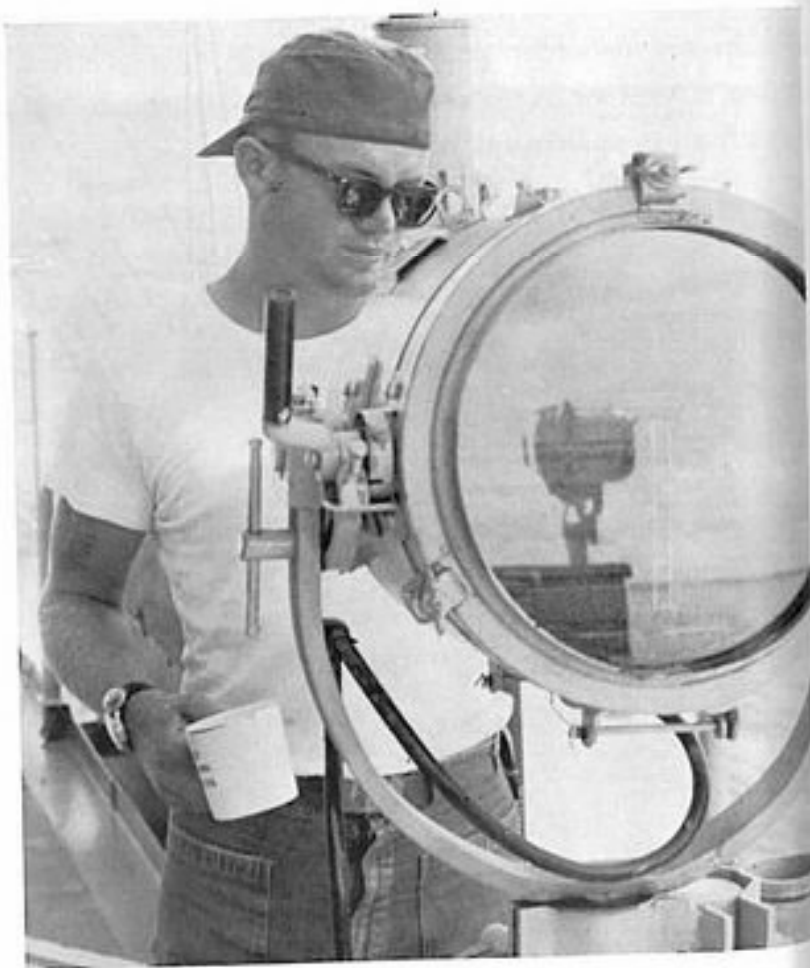
In our modern Navy, with changes occurring daily, the need for rapid communications that is both reliable and secure is of the utmost importance. OC Division, through its outstanding performance, has combined and maintained these needs in communications.



Worked 1,010,880 man hours of labor. . .



All visual communications between ships falls into the hands of the signalmen. Whether it be flashing light, semaphore or flag hoisting, all phases are handled efficiently and expertly by the signalmen of the KING.

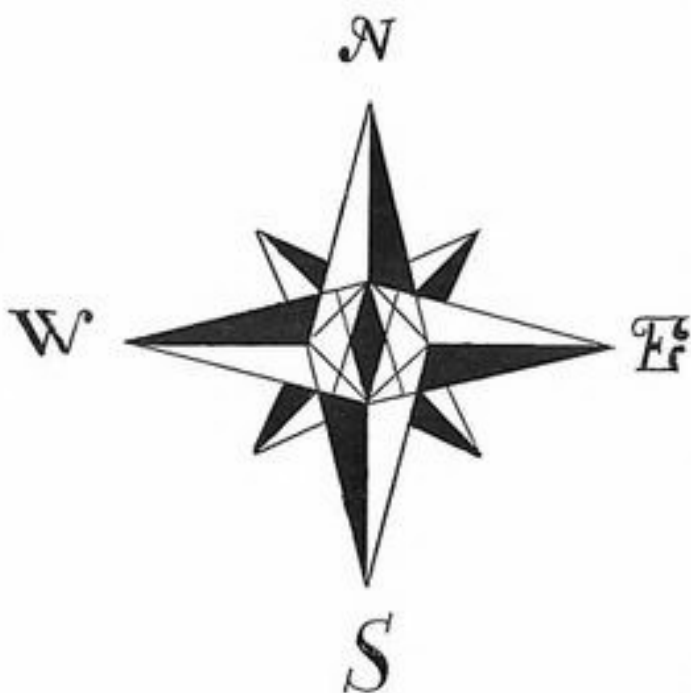


Executive Navigation Department



LT O. G. KRUEGER

The Executive Navigation Department, though the smallest in size, performs one of the biggest jobs aboard the KING and functions both as a department and a division. It is manned by Quartermasters, Yeomen, Personnelmen, Corpsmen and Postal Clerks.



"Naviguesser"

XN Division



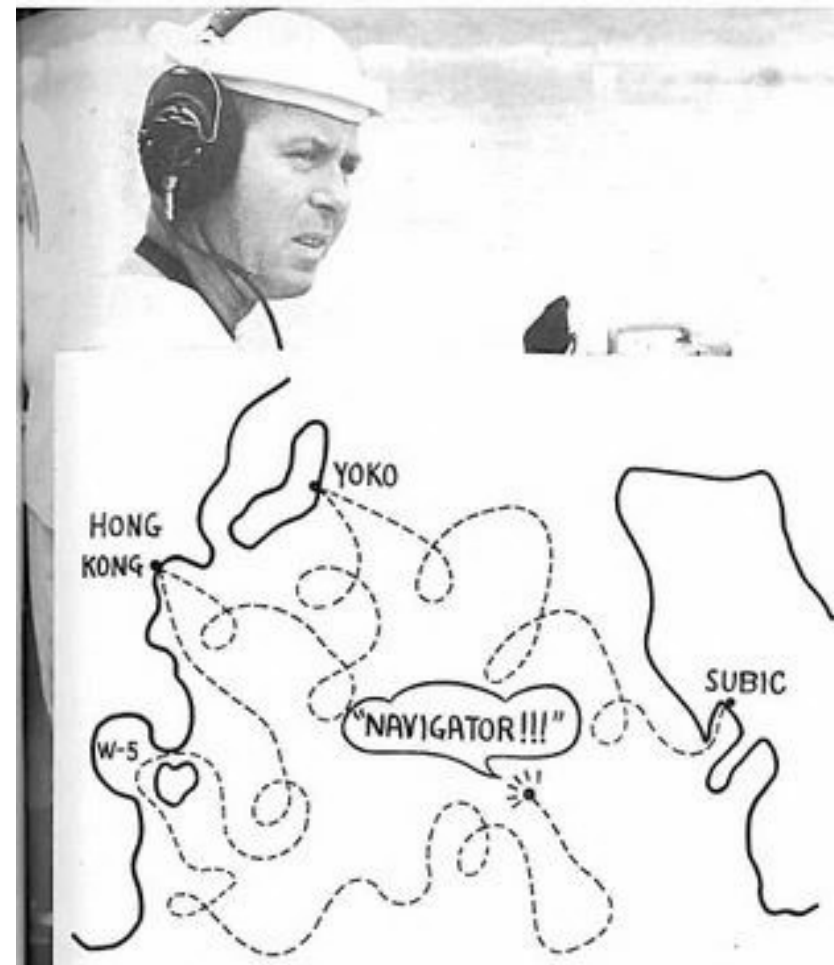
Front Row Left to Right: Riley, J., SN; Dronette, E. J., PNSN; Rippel, F. L., YN3.
Back Row: Carter, R. O., QM2; Altmann, P. B., QMSN; Hernandez, A., PN1; Cottrell, P. E., QM1.
Not Shown: Bartlett, T. M., SN; Swanson, C., PCI, VINSON,



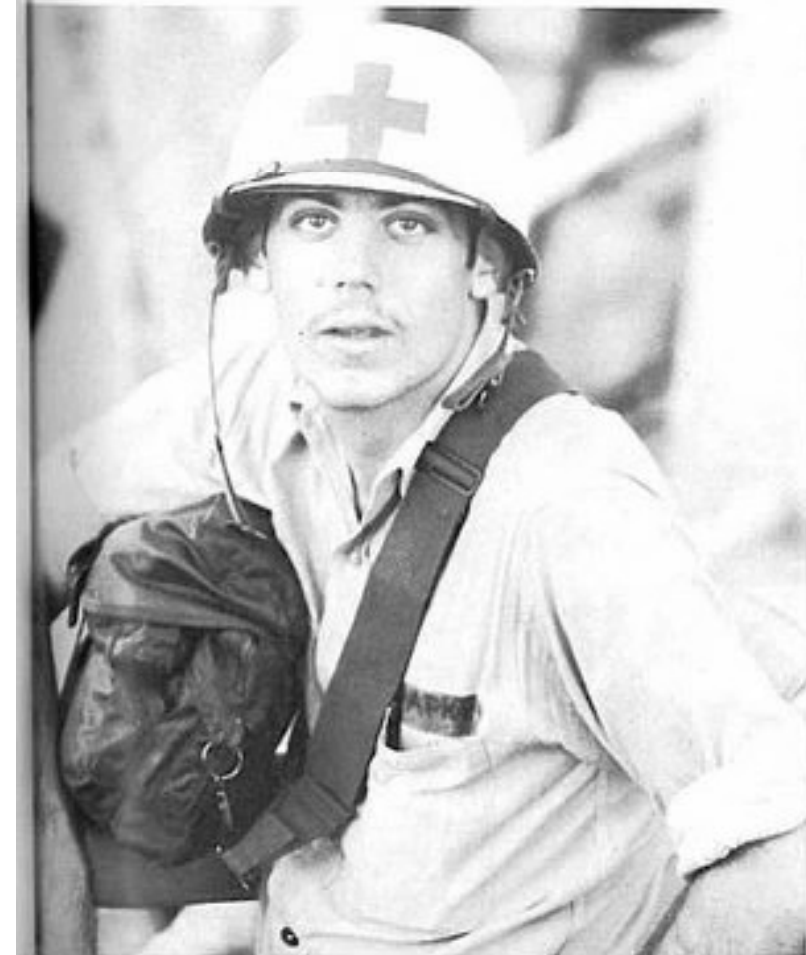
IZQUIERDO, R. F., HNC



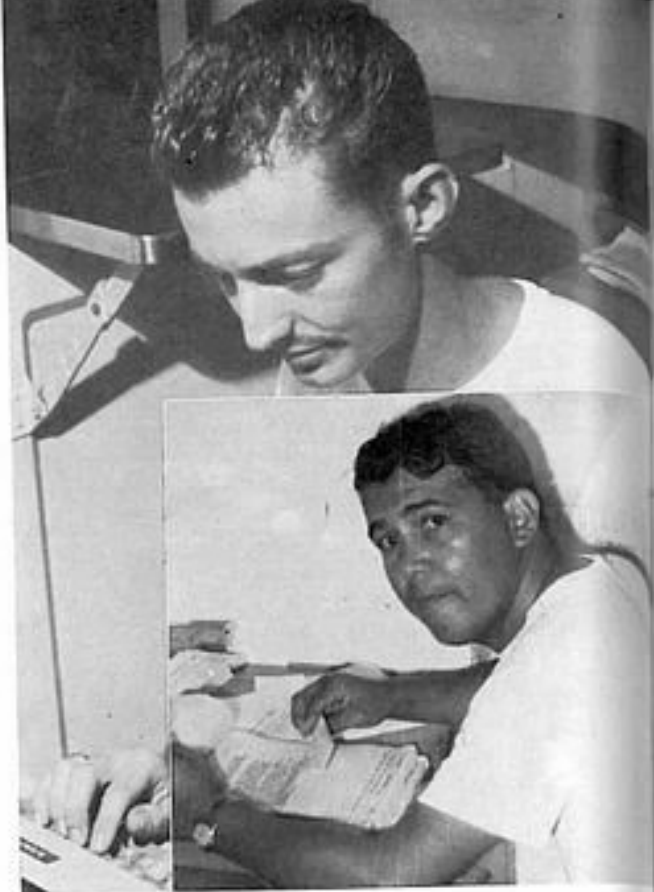
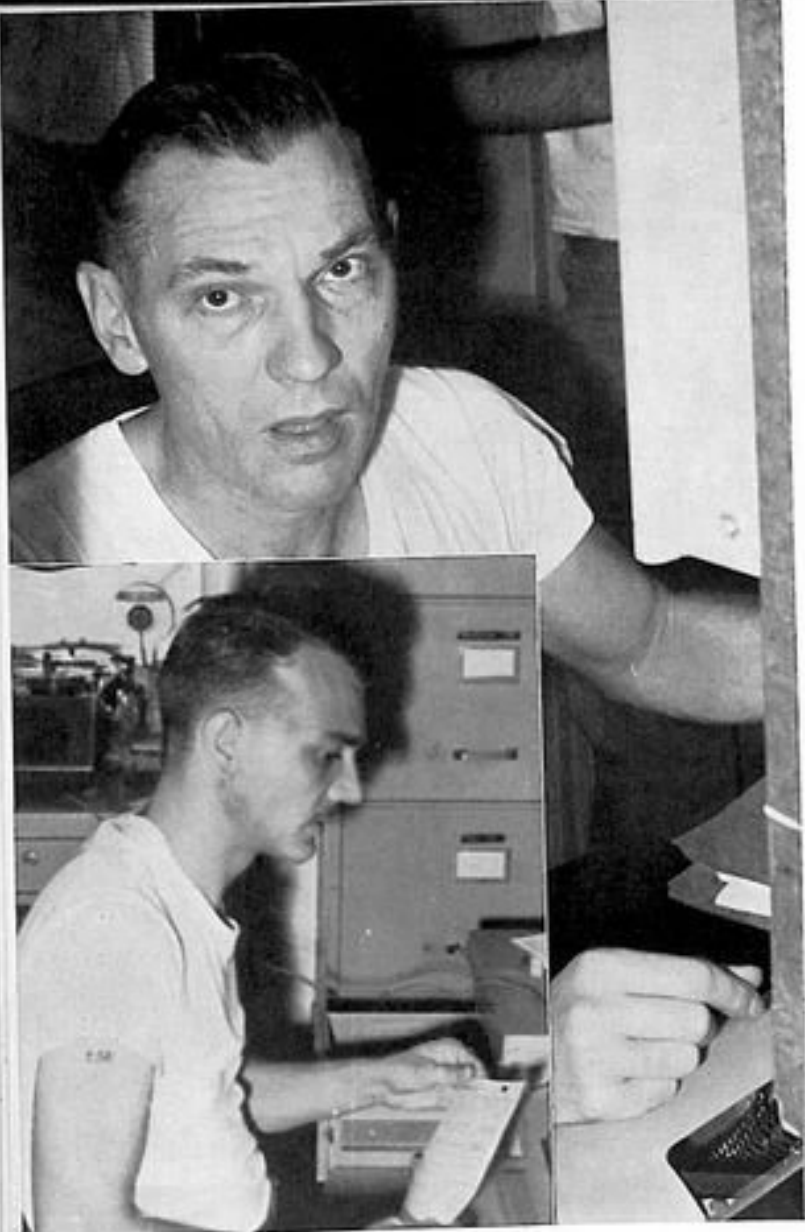
HOUSTON, A. C., YNCM



The Quartermasters are assistants to the Navigator and help determine the ship's position at sea. Other duties include maintaining charts and publications, bridge watches, and keeping logs of the ship's vital operations.



Effecting a high rate of personnel recovery by dispensing large quantities of "APC's" are the Corpsmen, who also find time to maintain a well equipped treatment room, and two battle dressing stations.



The Personnelmen handle all matters pertaining to an enlisted man's service record and the history of his career in the Navy.



The Yeomen "unsung Heroes" of the ship, are a vital part of shipboard organization. Their work includes the maintenance of all administrative files and preparation of all incoming and outgoing correspondence.



The Postal clerk becomes the center of attention, with the announcement of "MAIL CALL."



Engineering Department



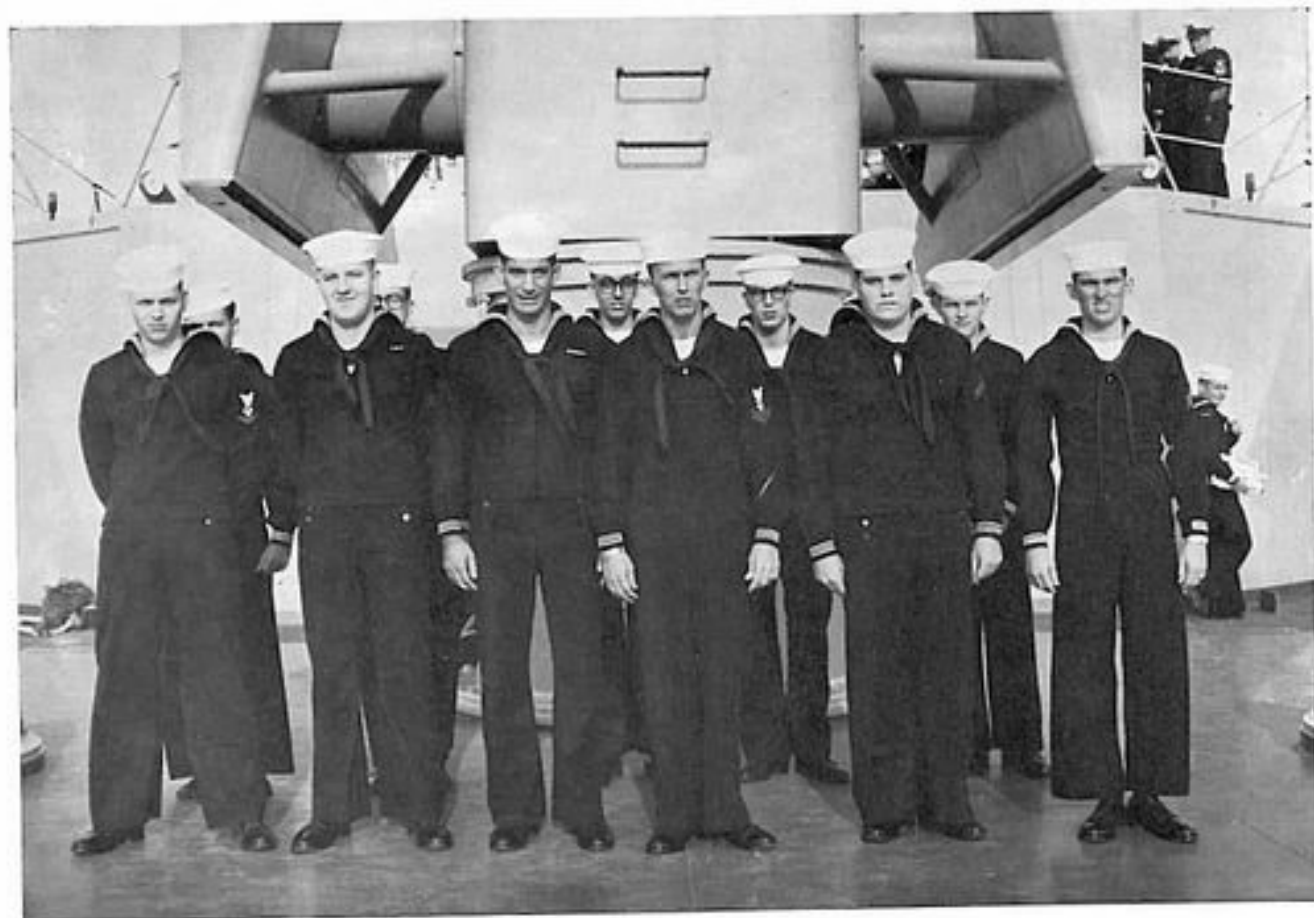
For what ever may be said of our snipes the true testimony to their talent is the consistently reliable operation of the ship while in WestPac. The three divisions within the department are EM, ER, and EB.

The Engineering Department has one of the most vital and strenuous tasks on the KING. It has the job of keeping the ship running which consists of supplying steam, air, water, power, and air conditioning to the various compartments within the ship.



"Chief Snipe"

EM Division



Front Row Left to Right: Mabary, R. R., MMFN; Crandell, R. D., MM3; Nelson, R. D., FN; Casper, K. L., MM2; Clarke, B. E., MM2; McGiliary, J., MM2; Phillips, J. R., FA; Larose, C. R., FN;
Middle Row: Yanas, R., MM2; Lens, R. J., MM3; Giesey, E. J., MM3; Chipchak, R. J., MMFN; Nichols, T. J., MM3; Dewalt, C. C., MMFN; Skaggs, W. B., FA; Jacobs, M. W., FN.



ENS. D. O. MOLNAR



SIMPSON, H. M., MMCS

EM
Division



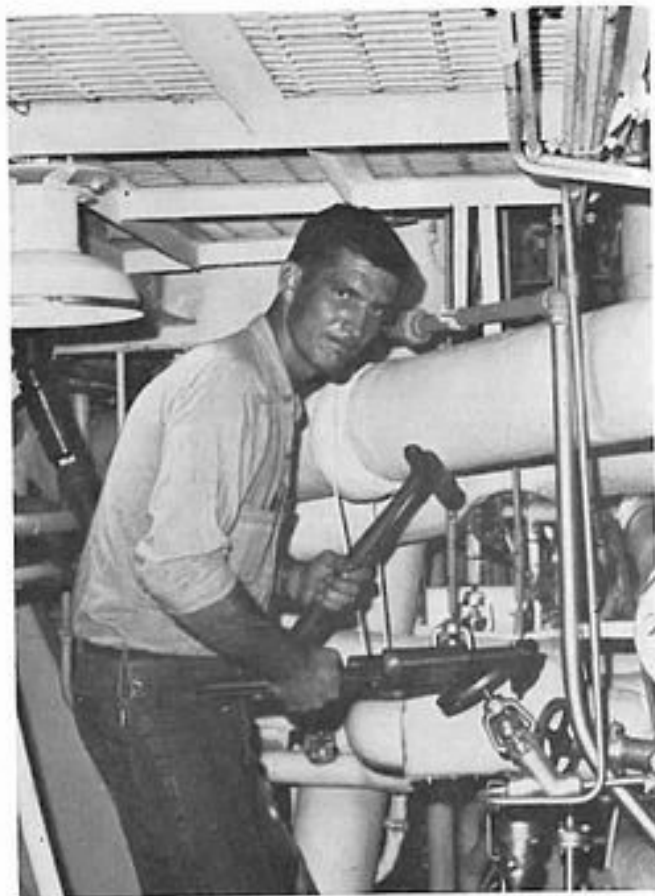
Front Row Left to Right: Armstrong, D. W., MM2; Cordova, P. J., MMFN; Denslar, J. R., FN;
Back Row: Cossey, T. J., MM3; Anderson, K. G., FN; Koyiades, W. I., FN; Funkhouser, E. D., MMFN.



When it comes to maintaining fresh water for the crew or, most important, keeping the ship running, everything is dependent upon the men of EM Division. To most people on the ship, a machinist mate works "down in the hole". . . .



where he goes when "Turn To" is passed in the morning and emerges the afternoon covered with sweat and grease.



This may be true in a way, but the "mucky" condition of the men is a result of the real talent displayed when everything is running normally.





The men of the KING can be proud of the EM Division and the work that they do.

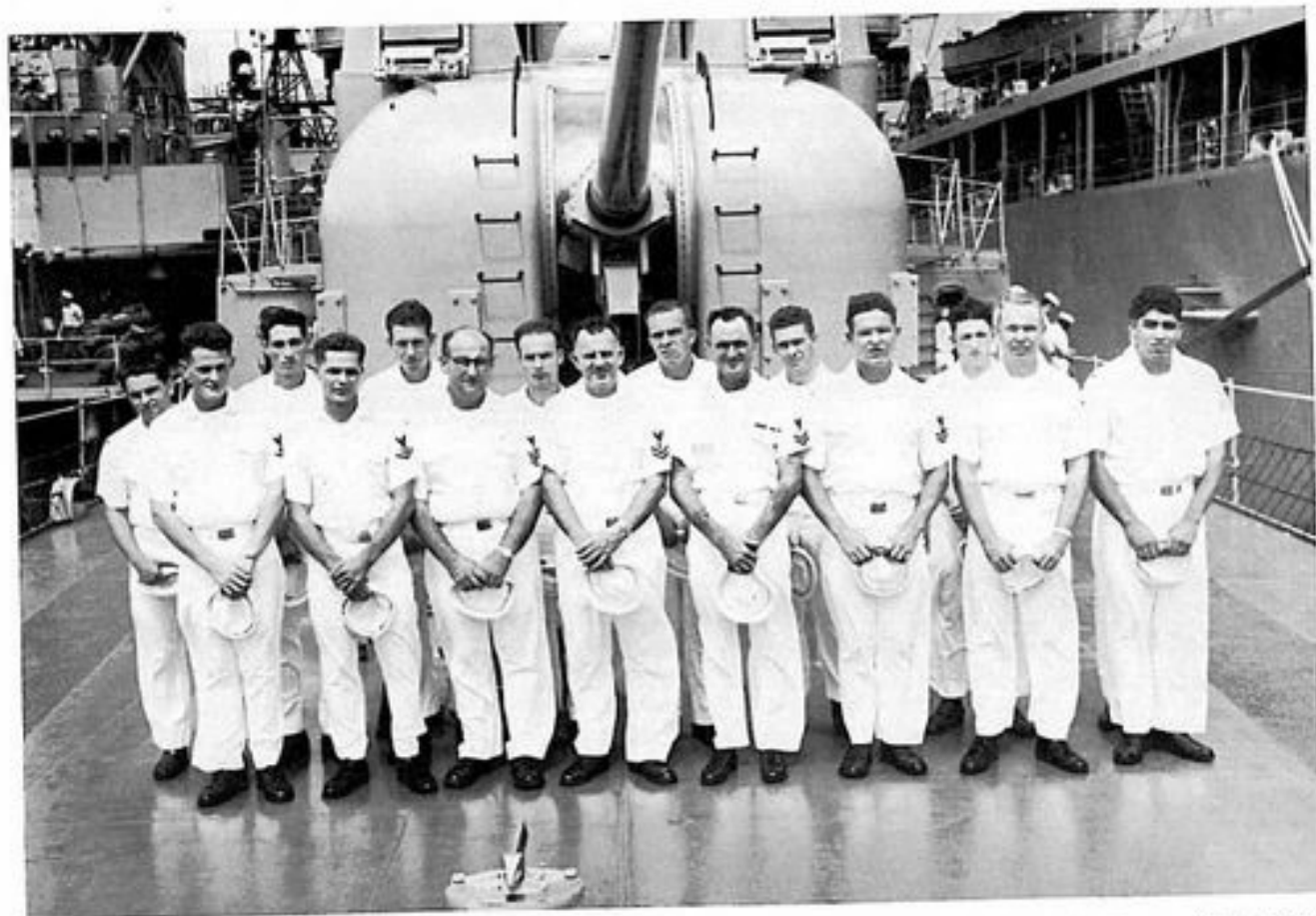


Many a time has passed when, if it had not been for their skills, we might have been stuck in that vast ocean.

DID YOU KNOW that the KING produced 1,735,867 gallons of fresh water during her cruise?



ER Division



Front Row Left to Right: Dawson, D. N., IC3; Gillock, C. E., IC3; Ward, J. E., MM1; Litavich, F. V., MR2; Chapman, W. J., DC2; Wiley, L. W., EM2; Stareck, R. C. L., EMFN; Oaxaca, J. M., ICFN;
Back Row: Oxtos, R. A., EMFR; Scott, D. W., MM2; Sarver, J. C., MM2; Pogorzelski, A. R., EM2; Mayreis, F. C., MR3; Simpson, G. D., ECFN; Hamlin, B. P., FN.



LTJG T. R. PETERMAN



LTJG K. A. DRISCOLL



Front Row Left to Right: Thomas, R. L., FN; Jones, R. W., SFP2; Price, D. D., FN; Carr, L. E., EN1; Buckley, R. K., EM2; Hubbard, B. G., EM2; Leek, C. R., ICFN; Jennings, T. A., Jr., SFM3.

Back Row: Hobgood, J. R., ICFN; Earl, W. J., EN2; Dickey, W. R., EM2; Hill, G. P., EMGN; McCollum, D. L., MM2; Chigoy, W. A., EMFN; Peck, G. W., III, EMFN; Rippey, J. W., Jr., EMFN.



HAYES, J. C., BTC.



McRAY, A. E., SFC



Front Row Left to Right: Lopez, M. S., IC2; McCayley, C. D., IC1; Solis, A. M., EM1; Boyle, D. J., MM1; Mason, W. L., SN; Ellison, R. E., ICFN; Pluciennik, L., ICFN.
 Back Row: Black, H. J., EM2; Thorpe, H. G., EM2; Jennings, J. S., SFM2; Hubbard, R. L., FN; Rutherford, W. W., EN3; Eckstein, R. L., ENFN; Mummert, H. C., ENFN.



What happens when you find a stuffed drain in the head, the telephone is dead, a bulb is burned out, that you need a welding or cutting job done, or that you need steam or HP air in your space? . . .



PING, J. A., EMC



you naturally call on the men of ER Division.

This division consists of four gangs: The IC Gang, responsible for the entertainment of the crew (such as movies and the ship's juke box) and all interior communications of the ship.

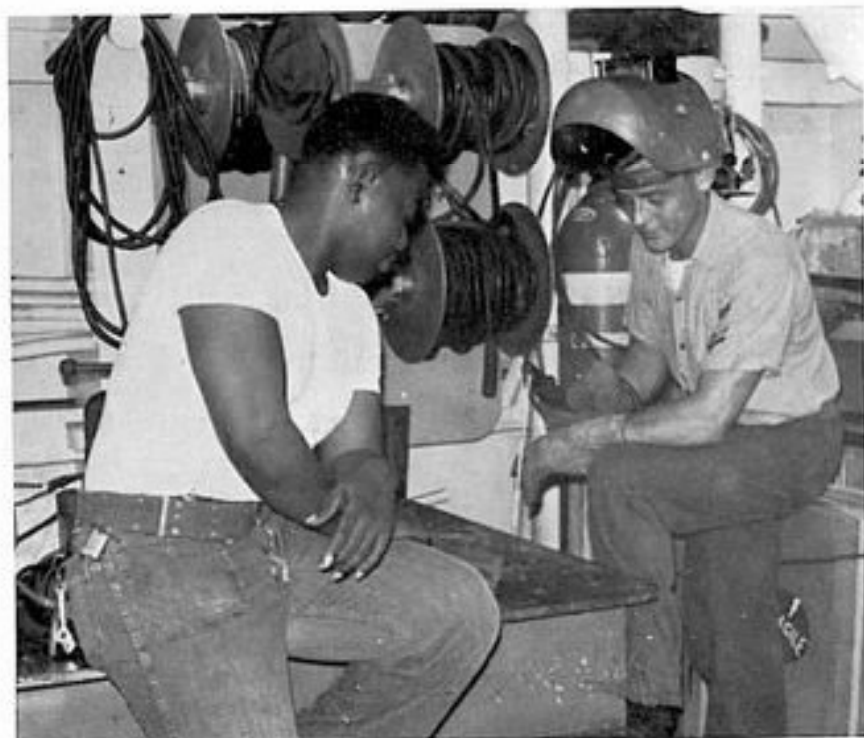


The Electricians or "E" Group takes care of the ship's electrical troubles such as lighting, batteries, electric motors and other small items such as toasters, irons, etc.





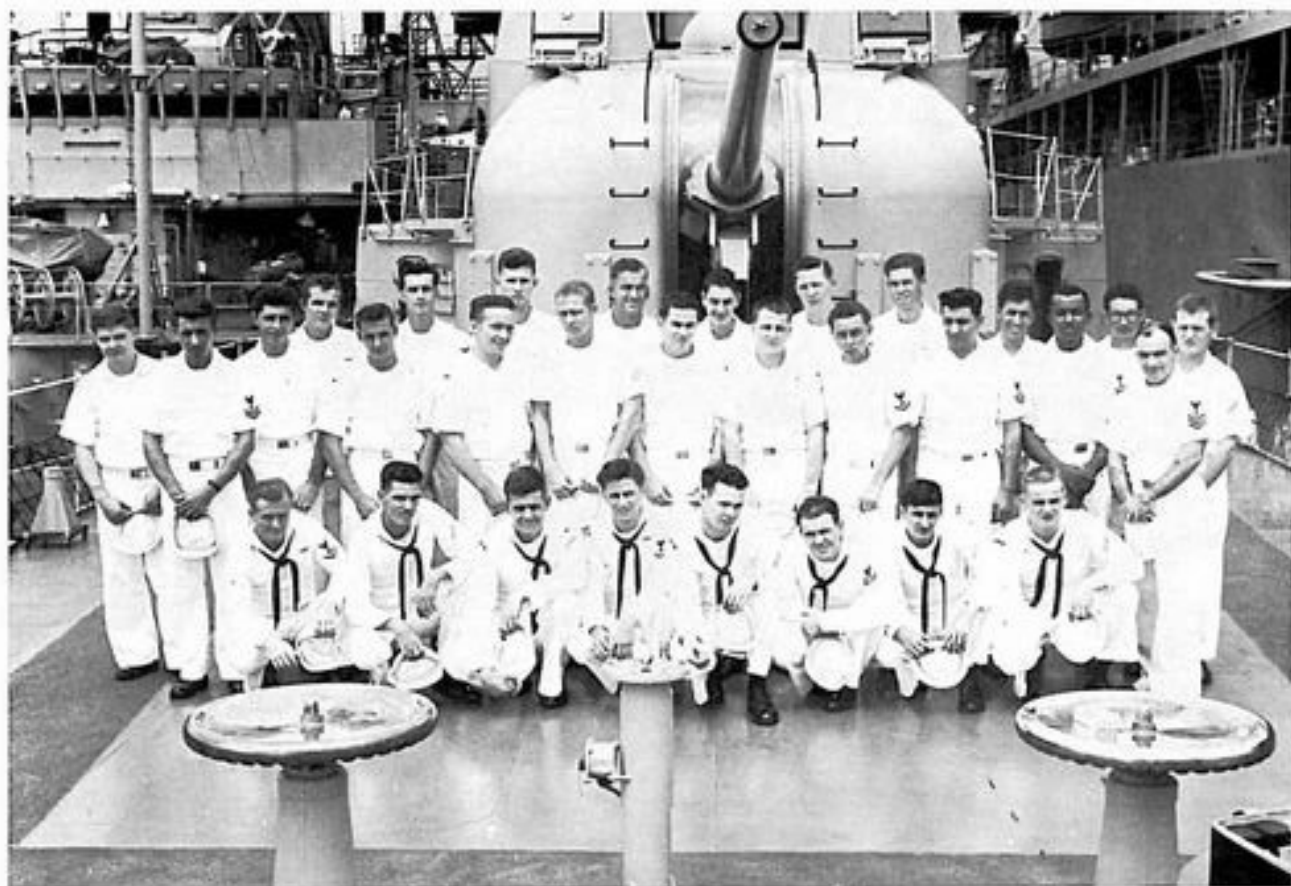
The "A" gang makes sure that the boat is ready for liberty runs, supplies the airconditioning for various spaces, and keeps the reefers at the right temperature which keeps the chow from spoiling.



Produced 1,004,962,500 watts of electric power....

and finally, the shipfitters or damage control gang. The primary function of this group is controlling damage on the KING and to insure that the KING's men are instructed and qualified in every aspect of damage control.

EB Division



Front Row Left to Right: Thompson, BT3; Pelham, J., BTFA; Wilson, S. E., BTFN; Yaros, H. S., BT3; Kennen, P. D., FA; Hill, M. T., BT2; Gallagher, R. J., FA; Smith, D. T., FN.

Middle Row: Kiser, B. J., FN; Phillips, R. W., BT2; Todash, L. J., FA; Fisher, G. D., FN; Cherry, R. E., FN; Skinner, M. C., FN; Stroup, P. H., BT3; Utnagu, L. G., BTFN; Cathy, D. M., BT3; Cordova, F. S., BT1; Palmer, G. R., BT2; Streeter, L. D., BT1.

Back Row: Hidds, T. M., FA; Kilburn, J. W., BT1; Greco, J. C., BT3; Gottsch, L. W., BT2; Gothberg, E., BT2; Kennedy, J. A., FN; White, C. W., FN; Kurt, T. A., FN; Terry, H. W., BT2; Meyer, J. A., FA.

Not Shown: Pannier, R. L., FA; Soper, T. L., BT1; Brown, M., FA; Gibbons, C. M., BT2; Crowther, C. L., BTFN; Starnick, R. A., FN; Goodman, R. D., FA.



LTJG P. E. WRIGHT



WILLIAMSON, F. H., Jr., SPCM

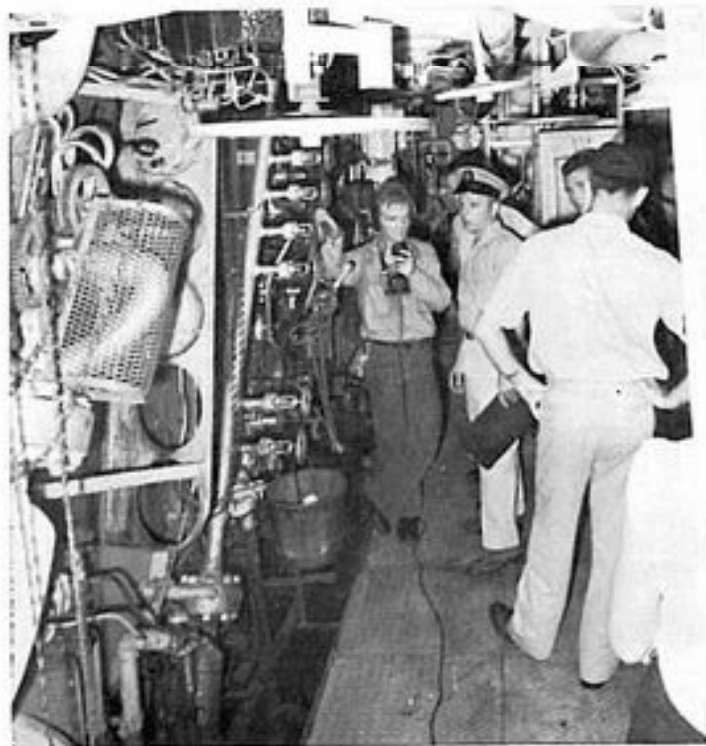


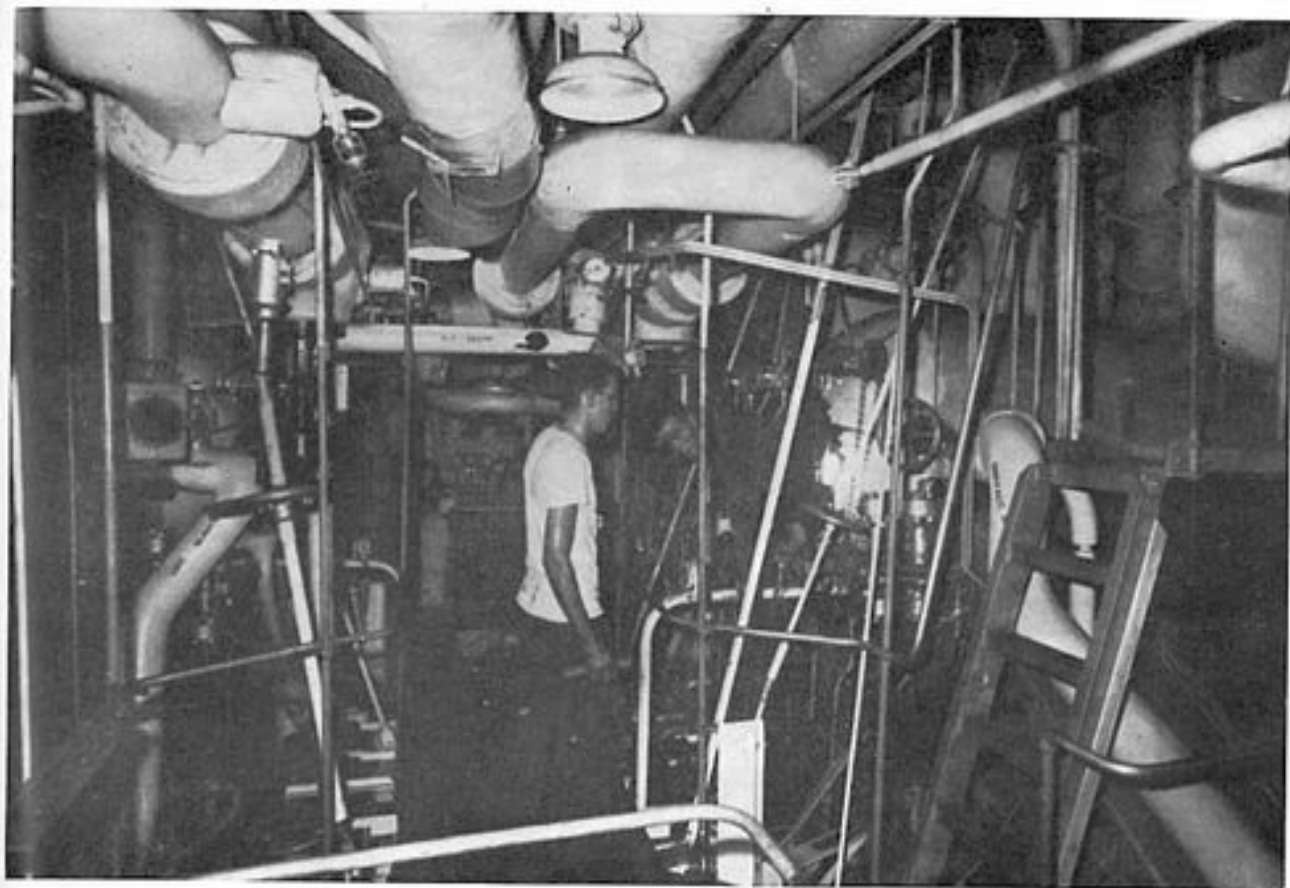
ALLEN, B. F., BTC



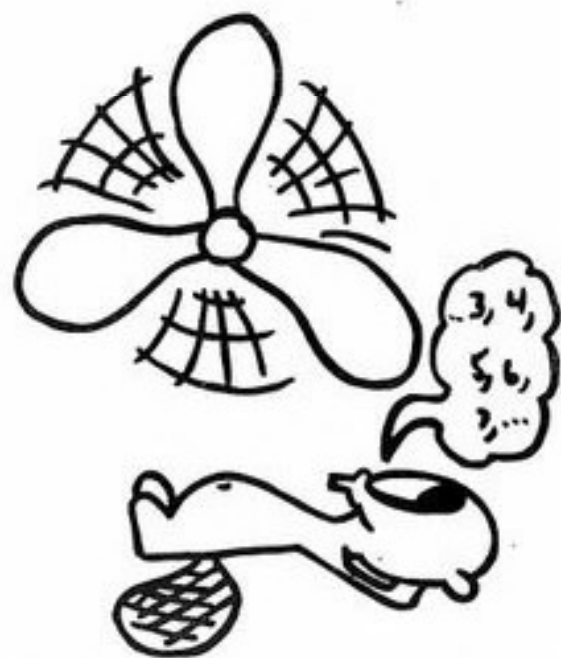
The third division in the Engineering Department is EB Division consisting of some forty boiler tenders.

The job of these men is to provide steam to drive the ship's turbines, turbogenerators and auxiliary equipment.





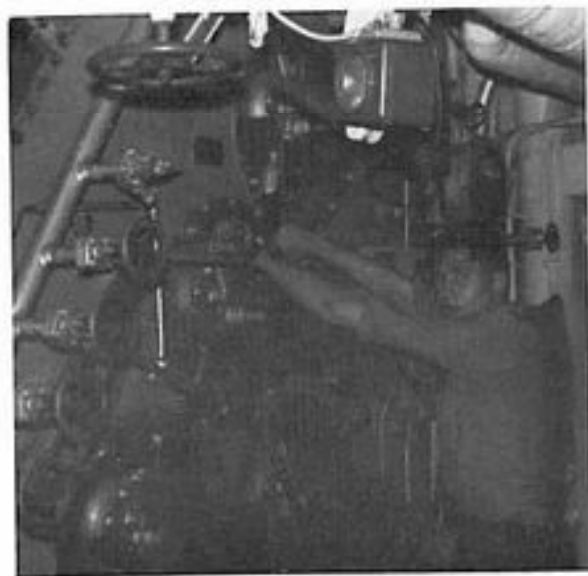
They also provide steam for the galley, laundry and other spaces throughout the ship.



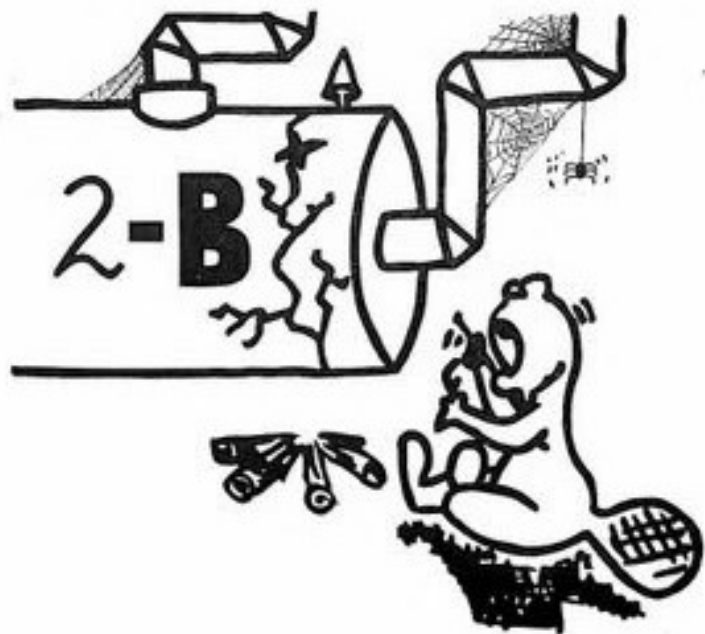
Each shaft on the King made approximately 1,444,884,480 revolutions during the cruise. . .



Because of EB Division, all other personnel are able to utilize their own equipment to help make KING the finest ship in the fleet.

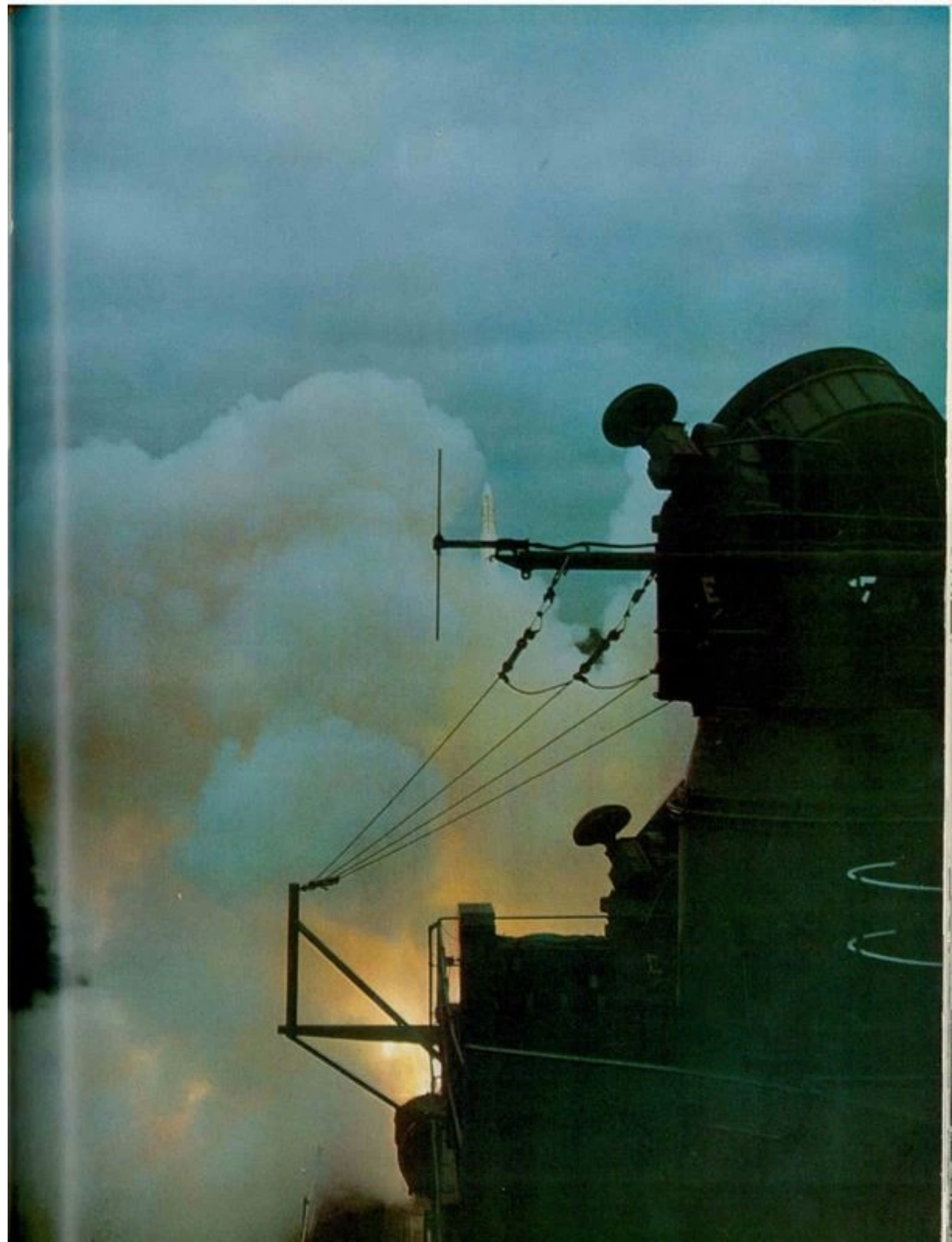


Burned 1,735,867 gallons of fuel. . .

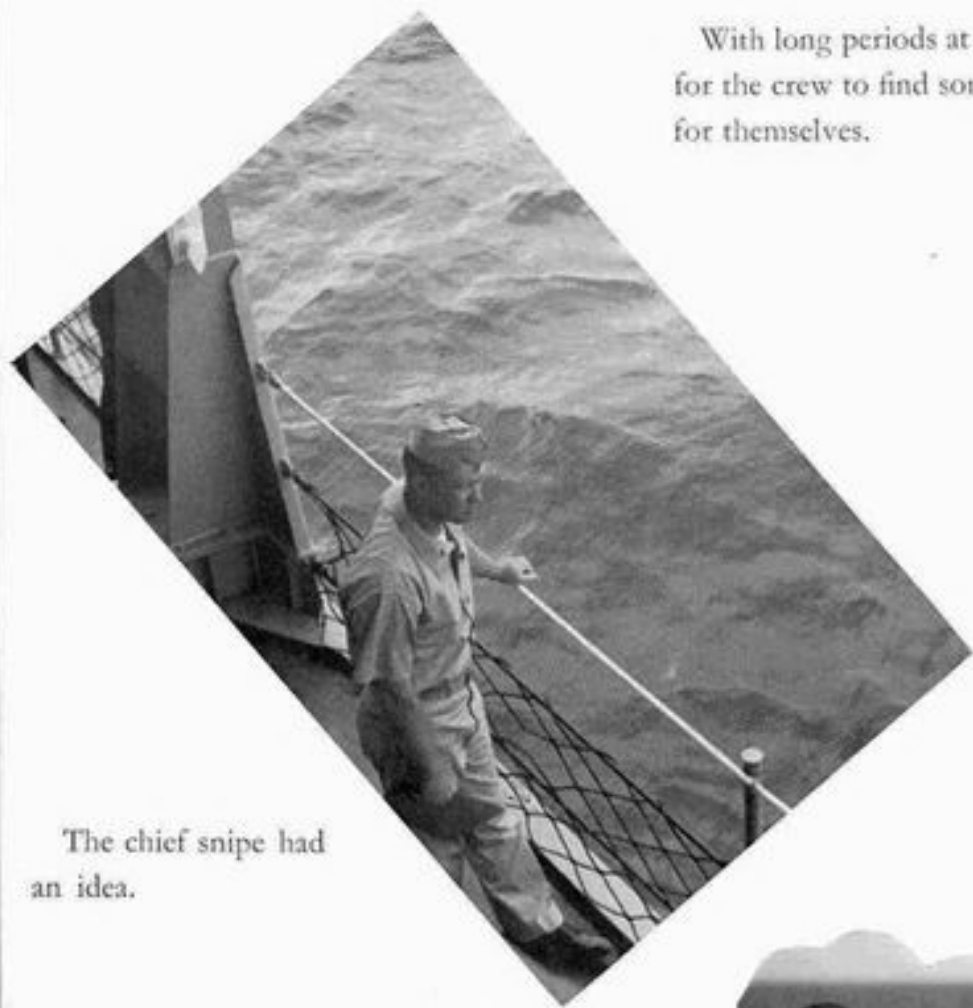








With long periods at sea, it became necessary for the crew to find some sort of entertainment for themselves.



The chief snipe had an idea.

"Why not have a hootnanny using the talent of the crew?"



He put out a call for talent and began practicing. Target time for "Tonkin Gulf Disaster Number One" the Fourth of July.





After many hours of planning and practice the big day arrived.

Festivities included a barbecue on the fantail.





All hands patiently awaited the arrival of...



The master of ceremonies.



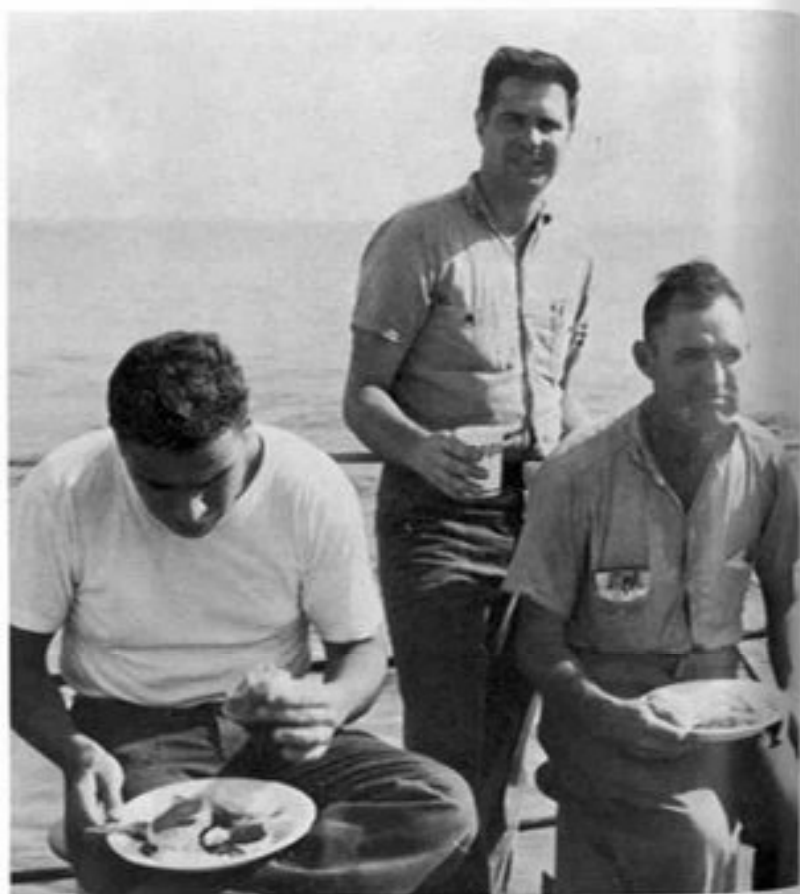
and the SHOW.





With the completion of "Tonkin Gulf Disaster Number One" the Chief Snipe had visions of bigger and better things to come. . .

"TONKIN GULF DISASTER NUMBER TWO!!!"

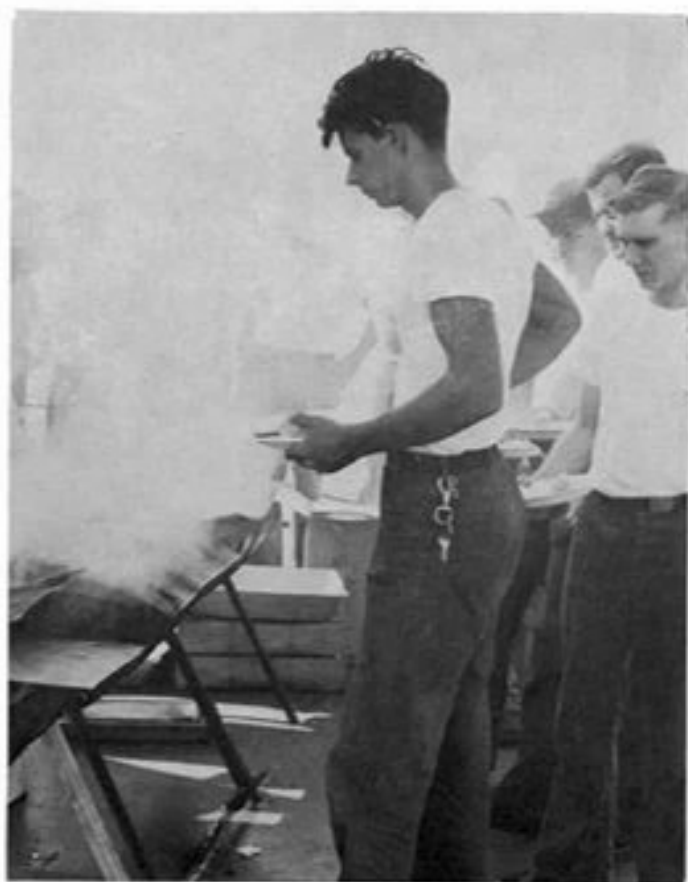


and so on Memorial Day 1965, the bigger and better "Tonkin Gulf Disaster Number Two" began.





To the casual observer, the Chief Snipe had this one in the Bag. . .



"What more could any person ask for; clear sunny day, calm waters, barbecue, and I might add, NO ANTS."





And so with the completion of the barbecue and the crew well fed. . . .



there was nothing left to do but wait.

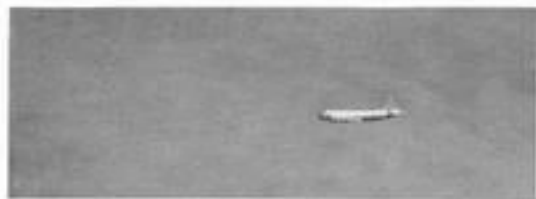


With the appearance of the Chief Snipe, the minstrels were in ready.

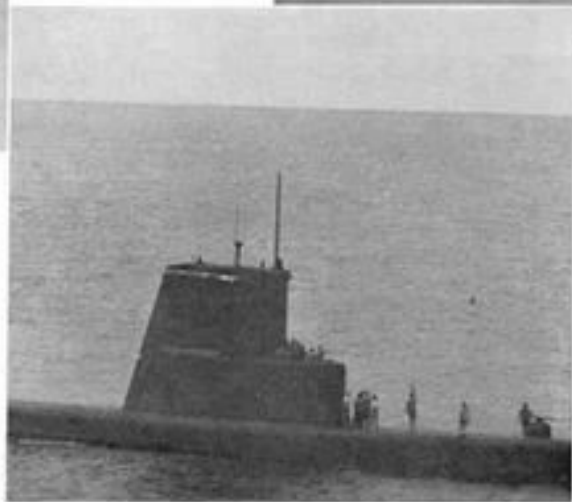


The *SHOW* was on!!





Talent scouts were on the prowl.



They came one and all, from everywhere. . .



Everyone was eagerly awaiting the arrival of. . .

Our very own

M W
i r
s o
s n
g
S
u
z
i
e



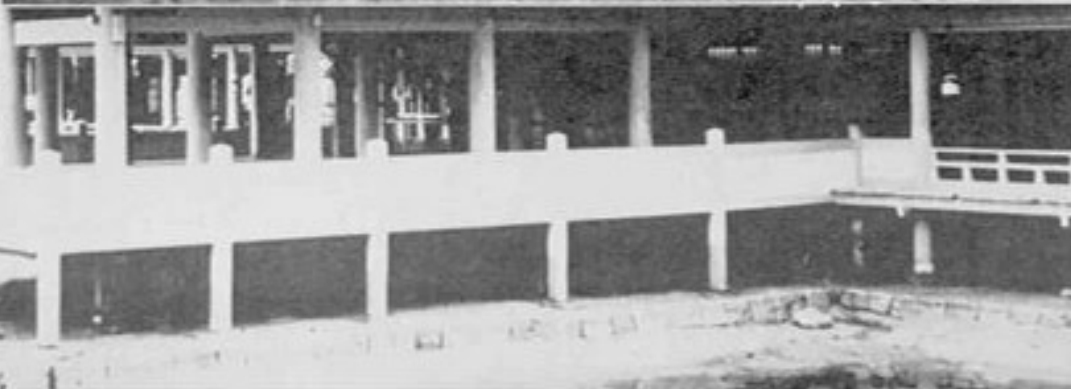


And for the crew's leisure past time there were other forms of entertainment.



But the best part of the cruise was yet to come. . .

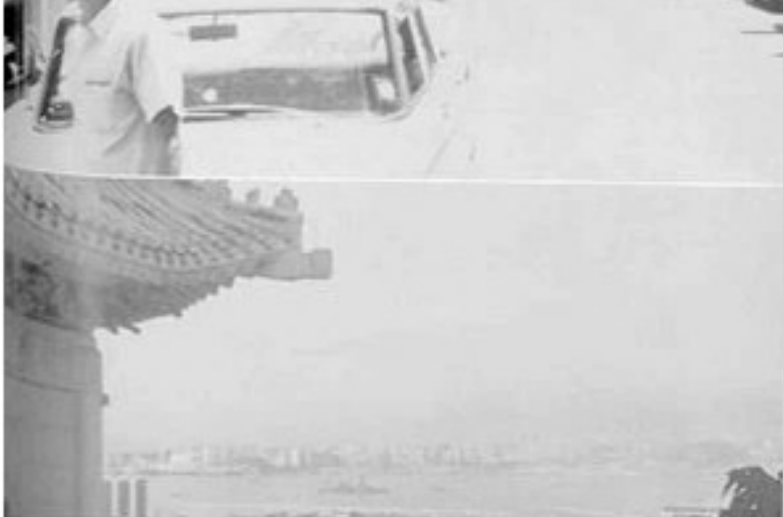




JAPAN



h
o
n
g
k
o
n
g
K
O
N
G
K
O
N
G

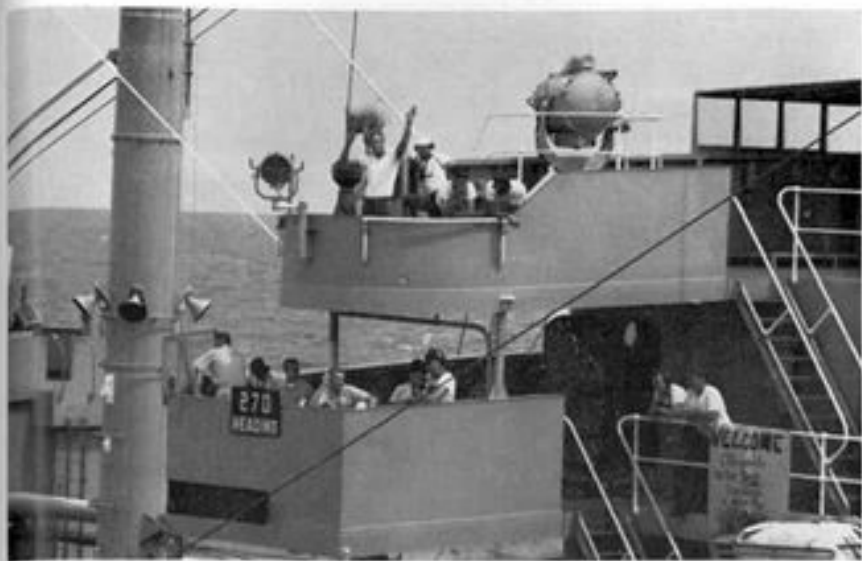




The KING is one of the most powerful ships in the Pacific Fleet and capable of any job.



But without the assistance of the navy supply force, including, oiler, ammunition, and stores ships, KING would never be able to meet her many commitments.



Underway replenishments are all hands evolutions which occur at least every third day, and at any time day or night. The ships steam along at 12 knots 100 feet from each other leaving little room for *error!*



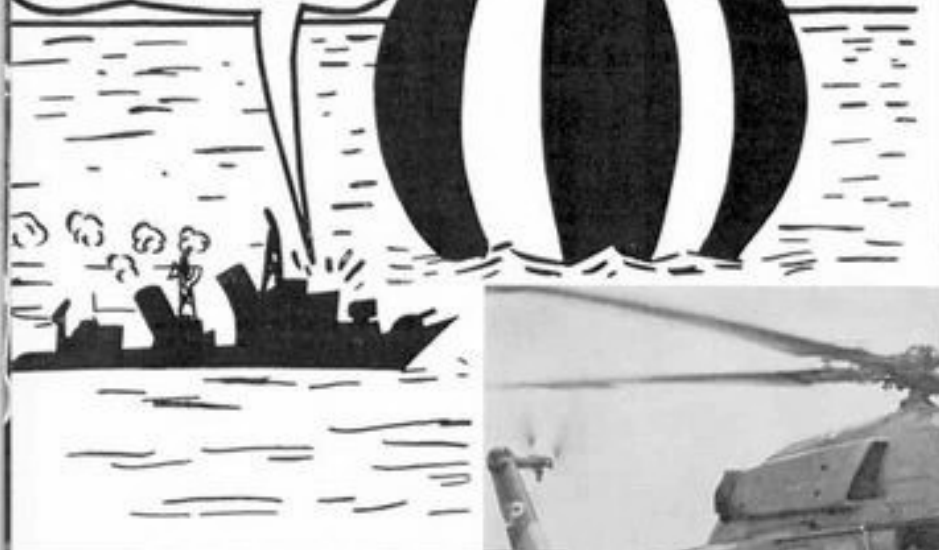
KING will always be indebted to the ships of the Navy supply force, and together they make up the *Navy Team*.



Occasionally we spill some!!!!

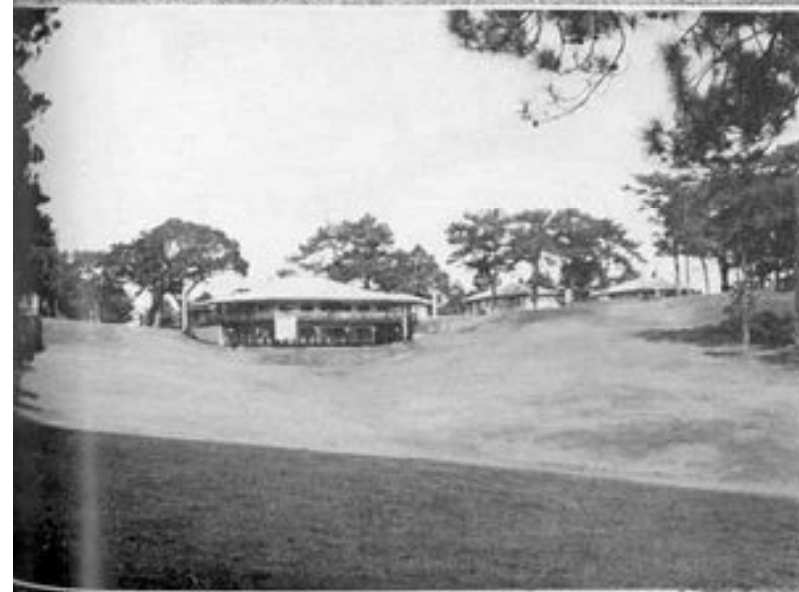


'Port lookout, Conn,
SAY AGAIN ALL
AFTER 'HUGE'..N

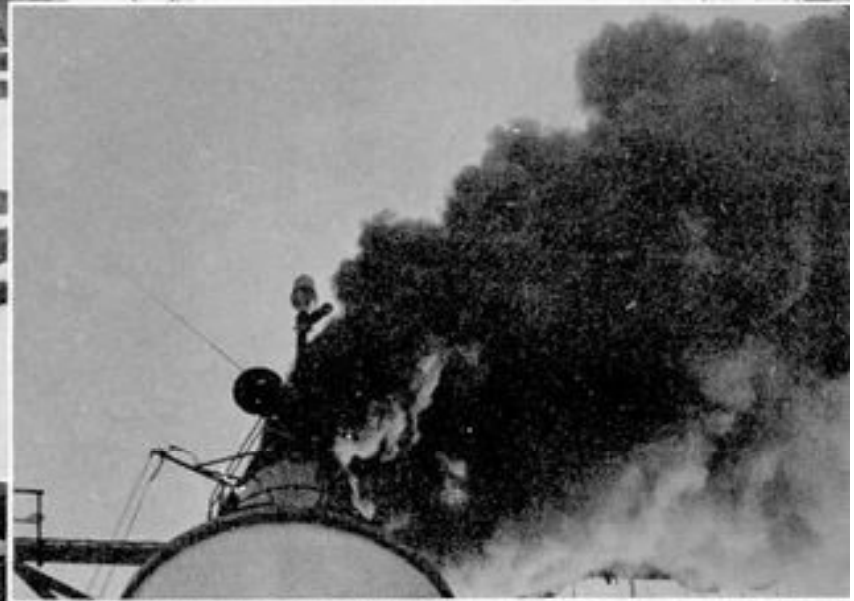
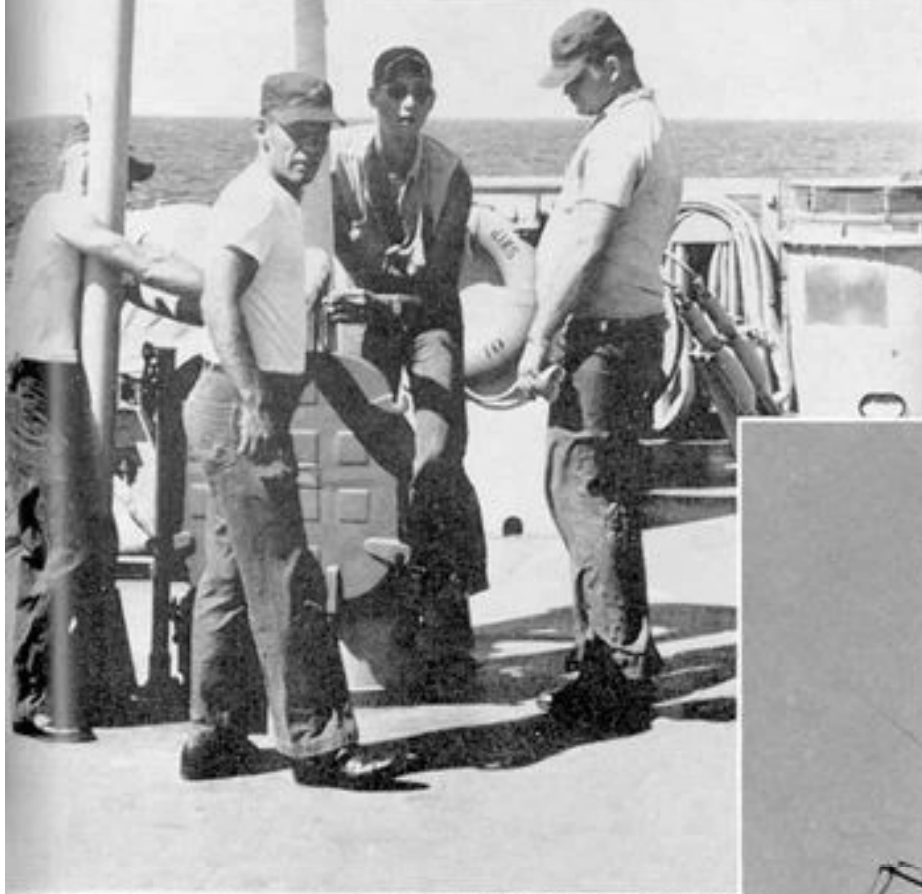


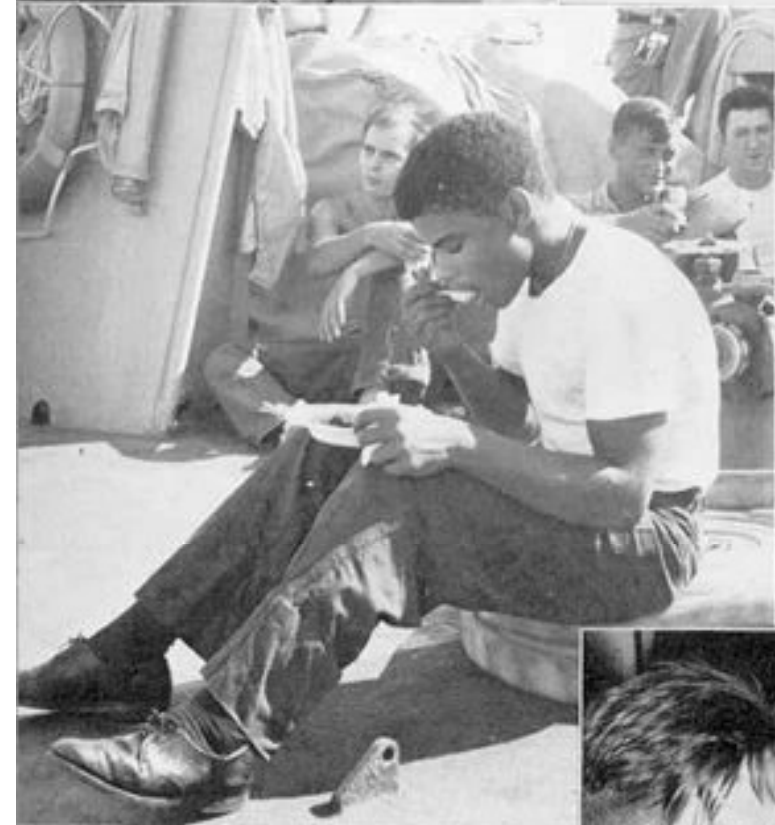
AKF
N I
O N R
T G S
H E R













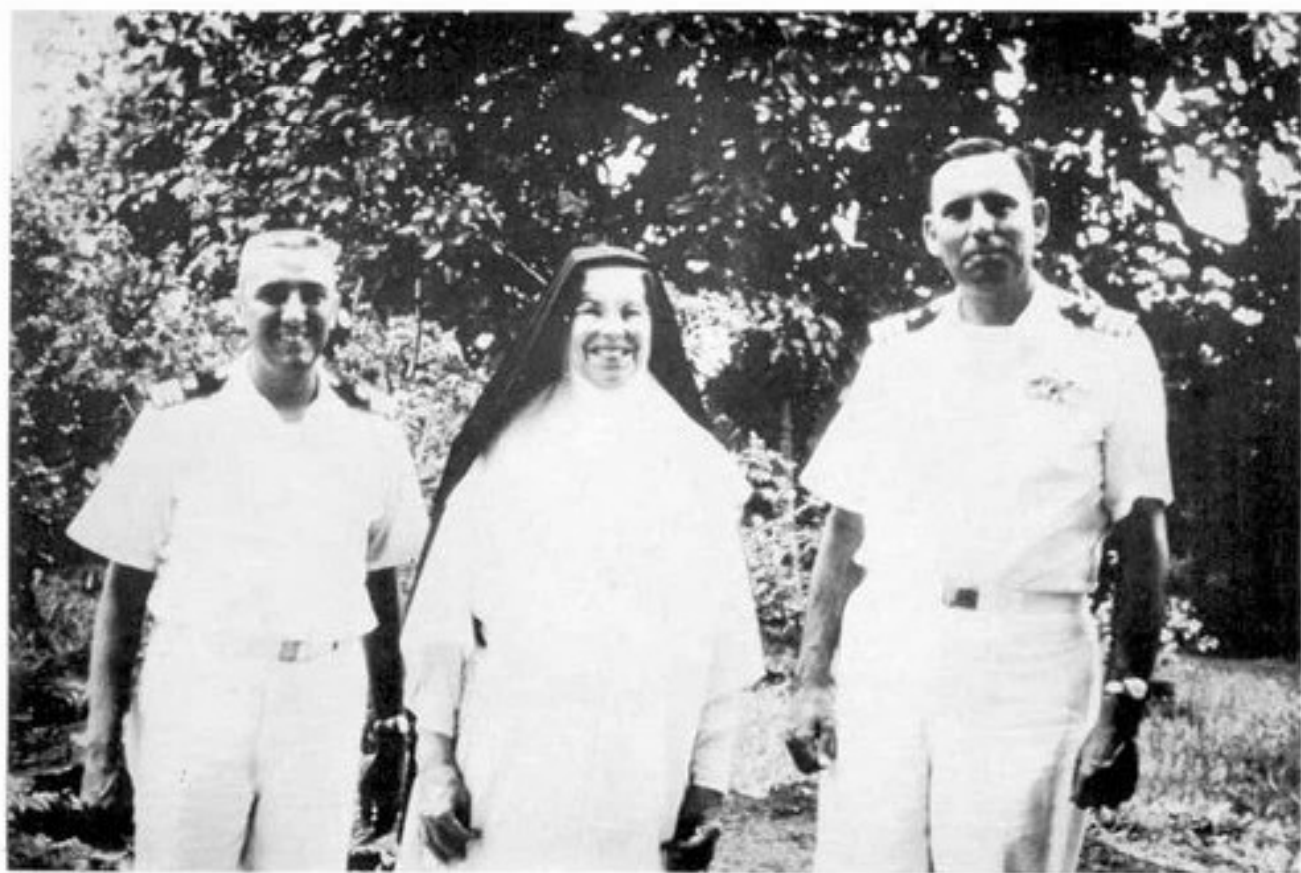






OPERATION HANDCLASP

OPERATION HANDCLASP is an organization sponsored by the Navy as part of the People to People program. Gifts donated by various organizations and individuals are carried to the needy people all over the world by Navy ships. Books, toys and tools are but a few of the many items this operation transports.





Captain Tesh and Lieutenant Commander Springer delivered boxes and boxes of toys and books to the children of an orphanage in the Philippines. Their reports of the smiling faces made our extension of Operation Handclasp a pleasant task.



